

Daily Summary for Amman Stock Exchange

VALUE TRADED (JD)

	2021	2022	NET CHANGE	CHANGE (%)
Daily	4,687,593	4,019,872	-667,721	-14.24%
Cumulative (1/11-6/11)	24,514,156	21,337,916	-3,176,240	-12.96%
Cumulative (2/1-6/11)	1,695,624,116	1,714,640,497	19,016,381	1.12%

NO. OF SHARES TRADED

	2021	2022	NET CHANGE	CHANGE (%)
Daily	3,494,140	3,694,425	200,285	5.73%
Cumulative (1/11-6/11)	21,319,593	15,898,716	-5,420,877	-25.43%
Cumulative (2/1-6/11)	1,327,995,780	991,309,180	-336,686,600	-25.35%

NO. OF TRANSACTIONS

	2021	2022	NET CHANGE	CHANGE (%)
Daily	2,763	2,092	-671	-24.29%
Cumulative (1/11-6/11)	13,647	8,272	-5,375	-39.39%
Cumulative (2/1-6/11)	690,984	647,801	-43,183	-6.25%

SOME FINANCIAL RATIOS FOR THE ASE (6/11/2022)

SECTOR	P/E	P/BV	DIVIDEND YIELD (%)	TURNOVER (%)
FINANCIAL	14.215	0.852	4.843	0.034
SERVICES	17.931	1.362	4.248	0.111
INDUSTRY	10.884	2.486	4.608	0.133
OVERALL	12.782	1.210	4.744	0.061

STOCK PRICE INDEX WEIGHTED BY FREE FLOAT MARKET CAPITALIZATION (1999=1000)

	THURSDAY 03/11/2022	SUNDAY 06/11/2022	% CHANGE	
			DAY BEFORE	YTD
GENERAL	2421.8	2404.5	-0.72%	13.49%
FINANCIAL	2634.7	2626.5	-0.31%	0.84%
SERVICES	1653.9	1634.7	-1.16%	23.15%
INDUSTRY	5095.4	5032.8	-1.23%	37.29%

STOCK PRICE INDEX WEIGHTED BY FREE FLOAT MARKET CAPITALIZATION ASE20 (2014=1000)

	1305.0	1295.5	-0.73%	20.58%
--	--------	--------	--------	--------

Total Return Index ASETR (2021=1074)

	1387.3	1377.2	-0.73%	28.19%
--	--------	--------	--------	--------

STOCK PRICE INDEX WEIGHTED BY MARKET CAPITALIZATION (1991=1000)

	THURSDAY 03/11/2022	SUNDAY 06/11/2022	% CHANGE	
			DAY BEFORE	YTD
GENERAL	4602.0	4563.3	-0.84%	13.93%
BANKS	6570.6	6560.3	-0.16%	-0.09%
INSURANCE	1383.3	1364.2	-1.38%	2.70%
SERVICES	811.4	806.8	-0.56%	3.12%
INDUSTRY	6724.3	6613.2	-1.65%	40.69%

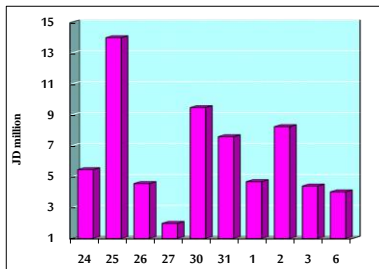
STOCK PRICE MARKET INDEX WEIGHTED BY FREE FLOAT MARKET CAP. (2012=1000)

	THURSDAY 03/11/2022	SUNDAY 06/11/2022	% CHANGE	
			DAY BEFORE	YTD
FIRST MARKET	1362.5	1352.1	-0.76%	18.10%
SECOND MARKET	778.1	778.8	0.09%	-16.85%

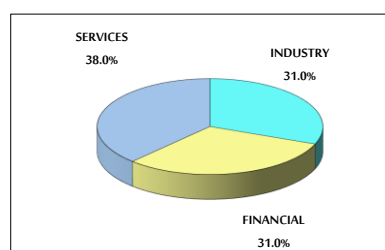
MARKET CAPITALIZATION (JD)

	17,535,622,268	17,395,820,180	-0.80%	12.26%
--	----------------	----------------	--------	--------

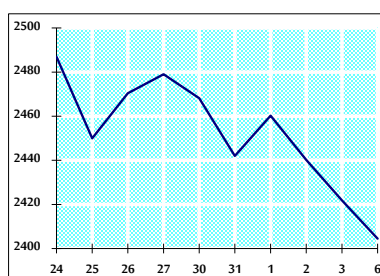
VALUE TRADED FROM 24/10 TO 6/11/2022



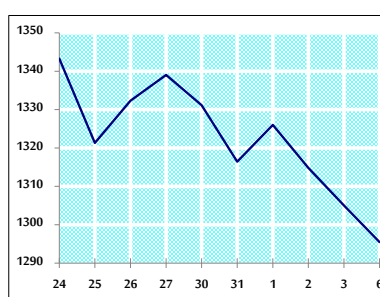
VALUE TRADED BY SECTOR SUNDAY 6/11/2022



GENERAL FREE FLOAT PRICE INDEX FROM 24/10 TO 6/11/2022



ASE20 FREE FLOAT PRICE INDEX FROM 24/10 TO 6/11/2022



GENERAL PRICE INDEX FROM 24/10 TO 6/11/2022

