

Daily Summary for Amman Stock Exchange

VALUE TRADED (JD)

	2022	2023	NET CHANGE	CHANGE (%)
Daily	4,492,258	9,737,584	5,245,326	116.76%
Cumulative (2/1-24/1)	90,038,410	148,907,209	58,868,799	65.38%
Cumulative (2/1-24/1)	90,038,410	148,907,209	58,868,799	65.38%

NO. OF SHARES TRADED

	2022	2023	NET CHANGE	CHANGE (%)
Daily	4,777,620	5,426,460	648,840	13.58%
Cumulative (2/1-24/1)	69,926,370	85,276,089	15,349,719	21.95%
Cumulative (2/1-24/1)	69,926,370	85,276,089	15,349,719	21.95%

NO. OF TRANSACTIONS

	2022	2023	NET CHANGE	CHANGE (%)
Daily	2,588	3,550	962	37.17%
Cumulative (2/1-24/1)	49,236	60,308	11,072	22.49%
Cumulative (2/1-24/1)	49,236	60,308	11,072	22.49%

SOME FINANCIAL RATIOS FOR THE ASE (24/1/2023)

SECTOR	P/E	P/BV	DIVIDEND YIELD (%)	TURNOVER (%)
FINANCIAL	15.051	0.902	4.599	0.086
SERVICES	20.383	1.564	3.710	0.116
INDUSTRY	13.495	2.984	3.777	0.059
OVERALL	14.396	1.359	4.241	0.089

STOCK PRICE INDEX WEIGHTED BY FREE FLOAT MARKET CAPITALIZATION (1999=1000)

	MONDAY 23/01/2023	TUESDAY 24/01/2023	% CHANGE	
			DAY BEFORE	YTD
GENERAL	2655.6	2676.2	0.78%	6.98%
FINANCIAL	2755.5	2778.4	0.83%	3.20%
SERVICES	1905.5	1904.3	-0.06%	9.39%
INDUSTRY	5921.6	6009.4	1.48%	13.55%

STOCK PRICE INDEX WEIGHTED BY FREE FLOAT MARKET CAPITALIZATION ASE20 (2014=1000)

	1441.7	1455.1	0.93%	8.16%
--	--------	--------	-------	-------

Total Return Index ASETR (2021=1074)

	1532.6	1546.8	0.93%	8.16%
--	--------	--------	-------	-------

STOCK PRICE INDEX WEIGHTED BY MARKET CAPITALIZATION (1991=1000)

	MONDAY 23/01/2023	TUESDAY 24/01/2023	% CHANGE	
			DAY BEFORE	YTD
GENERAL	5093.8	5167.1	1.44%	9.23%
BANKS	6881.7	6955.4	1.07%	2.99%
INSURANCE	1328.8	1333.0	0.32%	0.10%
SERVICES	919.8	919.4	-0.04%	7.90%
INDUSTRY	7887.6	8068.4	2.29%	17.24%

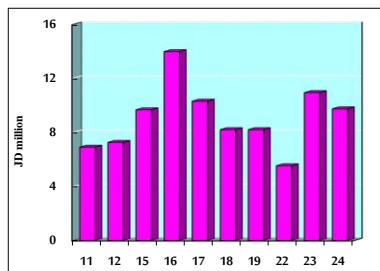
STOCK PRICE MARKET INDEX WEIGHTED BY FREE FLOAT MARKET CAP. (2012=1000)

	MONDAY 23/01/2023	TUESDAY 24/01/2023	% CHANGE	
			DAY BEFORE	YTD
FIRST MARKET	1499.9	1512.1	0.82%	7.35%
SECOND MARKET	790.3	794.4	0.51%	0.74%

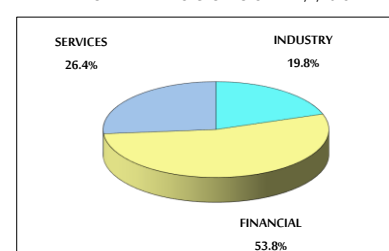
MARKET CAPITALIZATION (JD)

	19,279,036,614	19,541,890,356	1.36%	8.54%
--	----------------	----------------	-------	-------

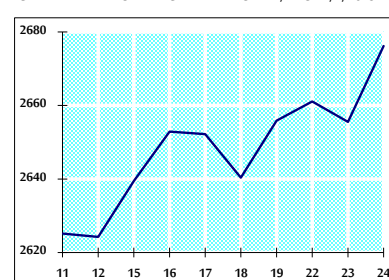
VALUE TRADED FROM 11/1 TO 24/1/2023



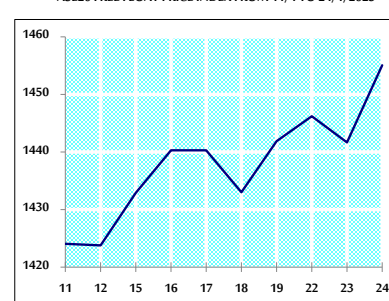
VALUE TRADED BY SECTOR TUESDAY 24/1/2023



GENERAL FREE FLOAT PRICE INDEX FROM 11/1 TO 24/1/2023



ASE20 FREE FLOAT PRICE INDEX FROM 11/1 TO 24/1/2023



GENERAL PRICE INDEX FROM 11/1 TO 24/1/2023

