

## Daily Summary for Amman Stock Exchange

### VALUE TRADED (JD)

	2022	2023	NET CHANGE	CHANGE (%)
Daily	6,184,696	8,596,854	2,412,158	39.00%
Cumulative (2/1-31/1)	111,585,267	189,749,776	78,164,509	70.05%
Cumulative (2/1-31/1)	111,585,267	189,749,776	78,164,509	70.05%

### NO. OF SHARES TRADED

	2022	2023	NET CHANGE	CHANGE (%)
Daily	4,605,290	7,086,600	2,481,310	53.88%
Cumulative (2/1-31/1)	86,555,993	111,944,262	25,388,269	29.33%
Cumulative (2/1-31/1)	86,555,993	111,944,262	25,388,269	29.33%

### NO. OF TRANSACTIONS

	2022	2023	NET CHANGE	CHANGE (%)
Daily	2,968	2,744	-224	-7.55%
Cumulative (2/1-31/1)	59,988	77,671	17,683	29.48%
Cumulative (2/1-31/1)	59,988	77,671	17,683	29.48%

### SOME FINANCIAL RATIOS FOR THE ASE (31/1/2023)

SECTOR	P/E	P/BV	DIVIDEND YIELD (%)	TURNOVER (%)
FINANCIAL	14.915	0.893	4.640	0.081
SERVICES	20.538	1.576	3.682	0.070
INDUSTRY	13.436	2.971	3.794	0.425
OVERALL	14.322	1.352	4.263	0.116

### STOCK PRICE INDEX WEIGHTED BY FREE FLOAT MARKET CAPITALIZATION (1999=1000)

	MONDAY 30/01/2023	TUESDAY 31/01/2023	% CHANGE	
			DAY BEFORE	YTD
GENERAL	2683.3	2676.5	-0.25%	6.99%
FINANCIAL	2790.5	2789.7	-0.03%	3.62%
SERVICES	1899.4	1889.9	-0.50%	8.56%
INDUSTRY	6033.1	6001.8	-0.52%	13.41%

### STOCK PRICE INDEX WEIGHTED BY FREE FLOAT MARKET CAPITALIZATION ASE20 (2014=1000)

	1461.1	1458.0	-0.21%	8.37%
--	--------	--------	--------	-------

### Total Return Index ASETR (2021=1074)

	1553.2	1549.9	-0.21%	8.38%
--	--------	--------	--------	-------

### STOCK PRICE INDEX WEIGHTED BY MARKET CAPITALIZATION (1991=1000)

	MONDAY 30/01/2023	TUESDAY 31/01/2023	% CHANGE	
			DAY BEFORE	YTD
GENERAL	5159.1	5140.4	-0.36%	8.67%
BANKS	6892.9	6879.9	-0.19%	1.87%
INSURANCE	1328.9	1321.6	-0.55%	-0.76%
SERVICES	935.7	935.6	-0.01%	9.80%
INDUSTRY	8072.7	8021.8	-0.63%	16.56%

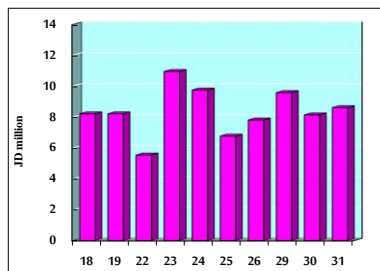
### STOCK PRICE MARKET INDEX WEIGHTED BY FREE FLOAT MARKET CAP. (2012=1000)

	MONDAY 30/01/2023	TUESDAY 31/01/2023	% CHANGE	
			DAY BEFORE	YTD
FIRST MARKET	1516.9	1513.6	-0.22%	7.46%
SECOND MARKET	793.7	788.8	-0.61%	0.04%

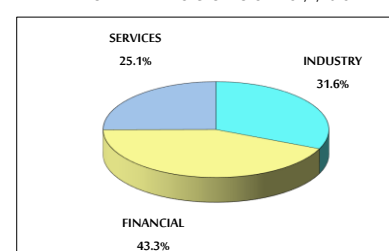
### MARKET CAPITALIZATION (JD)

	19,513,980,568	19,447,947,852	-0.34%	8.02%
--	----------------	----------------	--------	-------

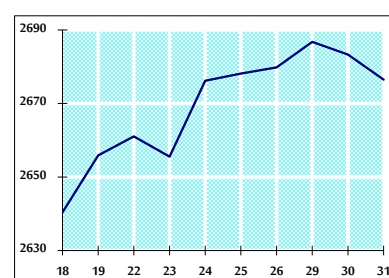
### VALUE TRADED FROM 18/1 TO 31/1/2023



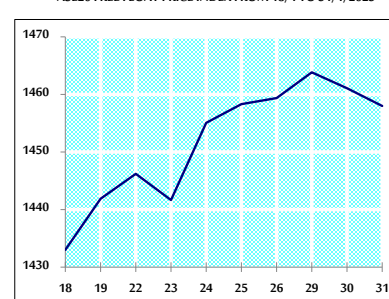
### VALUE TRADED BY SECTOR TUESDAY 31/1/2023



### GENERAL FREE FLOAT PRICE INDEX FROM 18/1 TO 31/1/2023



### ASE20 FREE FLOAT PRICE INDEX FROM 18/1 TO 31/1/2023



### GENERAL PRICE INDEX FROM 18/1 TO 31/1/2023

