

Daily Summary for Amman Stock Exchange

VALUE TRADED (JD)

	2022	2023	NET CHANGE	CHANGE (%)
Daily	5,874,100	9,619,079	3,744,979	63.75%
Cumulative (1/2-1/2)	5,874,100	9,619,079	3,744,979	63.75%
Cumulative (2/1-1/2)	117,459,367	199,368,855	81,909,488	69.73%

NO. OF SHARES TRADED

	2022	2023	NET CHANGE	CHANGE (%)
Daily	4,904,176	7,275,649	2,371,473	48.36%
Cumulative (1/2-1/2)	4,904,176	7,275,649	2,371,473	48.36%
Cumulative (2/1-1/2)	91,460,169	119,219,911	27,759,742	30.35%

NO. OF TRANSACTIONS

	2022	2023	NET CHANGE	CHANGE (%)
Daily	2,899	3,565	666	22.97%
Cumulative (1/2-1/2)	2,899	3,565	666	22.97%
Cumulative (2/1-1/2)	62,887	81,236	18,349	29.18%

SOME FINANCIAL RATIOS FOR THE ASE (1/2/2023)

SECTOR	P/E	P/BV	DIVIDEND YIELD (%)	TURNOVER (%)
FINANCIAL	15.000	0.899	4.614	0.086
SERVICES	20.853	1.595	3.641	0.117
INDUSTRY	13.463	2.977	3.786	0.334
OVERALL	14.399	1.359	4.240	0.119

STOCK PRICE INDEX WEIGHTED BY FREE FLOAT MARKET CAPITALIZATION (1999=1000)

	TUESDAY 31/01/2023	WEDNESDAY 01/02/2023	% CHANGE	
			DAY BEFORE	YTD
GENERAL	2676.5	2692.7	0.60%	7.64%
FINANCIAL	2789.7	2801.4	0.42%	4.05%
SERVICES	1889.9	1912.4	1.19%	9.86%
INDUSTRY	6001.8	6017.9	0.27%	13.71%

STOCK PRICE INDEX WEIGHTED BY FREE FLOAT MARKET CAPITALIZATION ASE20 (2014=1000)

	1458.0	1467.1	0.62%	9.05%
--	--------	--------	-------	-------

Total Return Index ASETR (2021=1074)

	1549.9	1559.6	0.62%	9.05%
--	--------	--------	-------	-------

STOCK PRICE INDEX WEIGHTED BY MARKET CAPITALIZATION (1991=1000)

	TUESDAY 31/01/2023	WEDNESDAY 01/02/2023	% CHANGE	
			DAY BEFORE	YTD
GENERAL	5140.4	5168.4	0.54%	9.26%
BANKS	6879.9	6915.0	0.51%	2.39%
INSURANCE	1321.6	1318.8	-0.21%	-0.96%
SERVICES	935.6	948.9	1.42%	11.36%
INDUSTRY	8021.8	8049.1	0.34%	16.96%

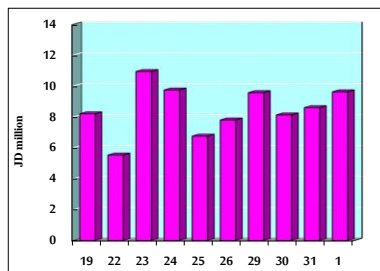
STOCK PRICE MARKET INDEX WEIGHTED BY FREE FLOAT MARKET CAP. (2012=1000)

	TUESDAY 31/01/2023	WEDNESDAY 01/02/2023	% CHANGE	
			DAY BEFORE	YTD
FIRST MARKET	1513.6	1522.5	0.59%	8.09%
SECOND MARKET	788.8	794.5	0.72%	0.76%

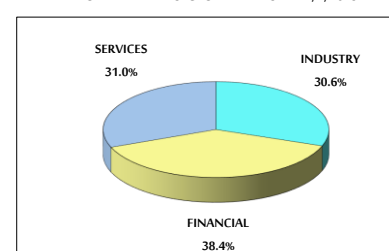
MARKET CAPITALIZATION (JD)

	19,447,947,852	19,547,993,572	0.51%	8.58%
--	----------------	----------------	-------	-------

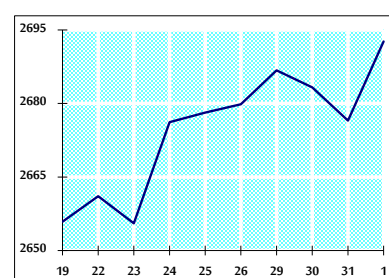
VALUE TRADED FROM 19/1 TO 1/2/2023



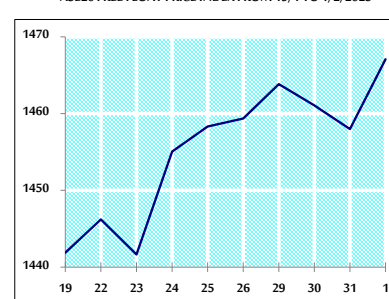
VALUE TRADED BY SECTOR WEDNESDAY 1/2/2023



GENERAL FREE FLOAT PRICE INDEX FROM 19/1 TO 1/2/2023



ASE20 FREE FLOAT PRICE INDEX FROM 19/1 TO 1/2/2023



GENERAL PRICE INDEX FROM 19/1 TO 1/2/2023

