

Daily Summary for Amman Stock Exchange

VALUE TRADED (JD)

	2022	2023	NET CHANGE	CHANGE (%)
Daily	5,712,682	4,148,073	-1,564,609	-27.39%
Cumulative (1/2-23/2)	96,750,759	158,877,074	62,126,315	64.21%
Cumulative (2/1-23/2)	208,336,026	348,626,850	140,290,824	67.34%

NO. OF SHARES TRADED

	2022	2023	NET CHANGE	CHANGE (%)
Daily	4,943,332	3,764,088	-1,179,244	-23.86%
Cumulative (1/2-23/2)	73,245,599	96,292,704	23,047,105	31.47%
Cumulative (2/1-23/2)	159,801,592	208,236,966	48,435,374	30.31%

NO. OF TRANSACTIONS

	2022	2023	NET CHANGE	CHANGE (%)
Daily	3,070	2,420	-650	-21.17%
Cumulative (1/2-23/2)	44,552	65,893	21,341	47.90%
Cumulative (2/1-23/2)	104,540	143,564	39,024	37.33%

SOME FINANCIAL RATIOS FOR THE ASE (23/2/2023)

SECTOR	P/E	P/BV	DIVIDEND YIELD (%)	TURNOVER (%)
FINANCIAL	10.802	0.845	5.399	0.071
SERVICES	10.129	1.551	3.722	0.042
INDUSTRY	5.739	3.031	3.684	0.040
OVERALL	7.616	1.308	4.585	0.062

STOCK PRICE INDEX WEIGHTED BY FREE FLOAT MARKET CAPITALIZATION (1999=1000)

	WEDNESDAY 22/02/2023	THURSDAY 23/02/2023	% CHANGE	
			DAY BEFORE	YTD
GENERAL	2667.6	2653.6	-0.52%	6.08%
FINANCIAL	2769.1	2762.6	-0.24%	2.61%
SERVICES	1857.6	1846.6	-0.59%	6.08%
INDUSTRY	6164.5	6095.9	-1.11%	15.18%

STOCK PRICE INDEX WEIGHTED BY FREE FLOAT MARKET CAPITALIZATION ASE20 (2014=1000)

	1452.7	1444.8	-0.55%	7.39%
--	--------	--------	--------	-------

Total Return Index ASETR (2021=1074)

	1544.3	1535.9	-0.55%	7.39%
--	--------	--------	--------	-------

STOCK PRICE INDEX WEIGHTED BY MARKET CAPITALIZATION (1991=1000)

	WEDNESDAY 22/02/2023	THURSDAY 23/02/2023	% CHANGE	
			DAY BEFORE	YTD
GENERAL	5212.3	5172.8	-0.76%	9.35%
BANKS	6840.2	6833.7	-0.09%	1.19%
INSURANCE	1313.9	1312.2	-0.13%	-1.46%
SERVICES	941.0	935.4	-0.60%	9.78%
INDUSTRY	8321.3	8199.2	-1.47%	19.14%

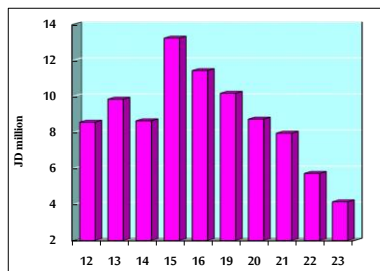
STOCK PRICE MARKET INDEX WEIGHTED BY FREE FLOAT MARKET CAP. (2012=1000)

	WEDNESDAY 22/02/2023	THURSDAY 23/02/2023	% CHANGE	
			DAY BEFORE	YTD
FIRST MARKET	1506.8	1499.1	-0.51%	6.42%
SECOND MARKET	794.9	792.3	-0.33%	0.48%

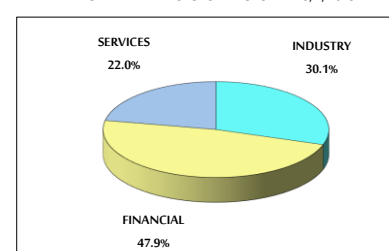
MARKET CAPITALIZATION (JD)

	19,708,248,487	19,567,923,757	-0.71%	8.69%
--	----------------	----------------	--------	-------

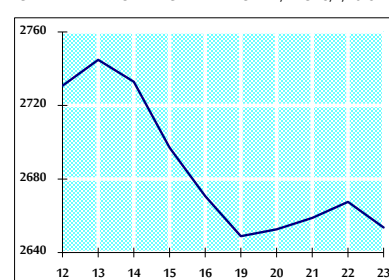
VALUE TRADED FROM 12/2 TO 23/2/2023



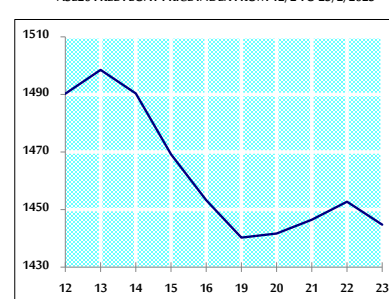
VALUE TRADED BY SECTOR THURSDAY 23/2/2023



GENERAL FREE FLOAT PRICE INDEX FROM 12/2 TO 23/2/2023



ASE20 FREE FLOAT PRICE INDEX FROM 12/2 TO 23/2/2023



GENERAL PRICE INDEX FROM 12/2 TO 23/2/2023

