

Daily Summary for Amman Stock Exchange

VALUE TRADED (JD)

	2022	2023	NET CHANGE	CHANGE (%)
Daily	7,353,459	5,977,606	-1,375,853	-18.71%
Cumulative (1/3-28/3)	144,058,200	143,754,907	-303,293	-0.21%
Cumulative (2/1-28/3)	370,478,878	517,829,543	147,350,665	39.77%

NO. OF SHARES TRADED

	2022	2023	NET CHANGE	CHANGE (%)
Daily	5,241,494	4,755,914	-485,580	-9.26%
Cumulative (1/3-28/3)	85,272,795	99,700,672	14,427,877	16.92%
Cumulative (2/1-28/3)	261,109,690	324,644,886	63,535,196	24.33%

NO. OF TRANSACTIONS

	2022	2023	NET CHANGE	CHANGE (%)
Daily	3,085	2,656	-429	-13.91%
Cumulative (1/3-28/3)	53,932	55,545	1,613	2.99%
Cumulative (2/1-28/3)	165,507	208,960	43,453	26.25%

SOME FINANCIAL RATIOS FOR THE ASE (28/3/2023)

SECTOR	P/E	P/BV	DIVIDEND YIELD (%)	TURNOVER (%)
FINANCIAL	10.761	0.839	5.447	0.083
SERVICES	10.141	1.457	4.586	0.055
INDUSTRY	5.356	1.979	5.769	0.089
OVERALL	7.398	1.164	5.642	0.078

STOCK PRICE INDEX WEIGHTED BY FREE FLOAT MARKET CAPITALIZATION (1999=1000)

	MONDAY 27/03/2023	TUESDAY 28/03/2023	% CHANGE	
			DAY BEFORE	YTD
GENERAL	2589.6	2603.1	0.52%	4.06%
FINANCIAL	2728.6	2729.2	0.02%	1.37%
SERVICES	1833.3	1842.3	0.49%	5.83%
INDUSTRY	5625.5	5741.5	2.06%	8.49%

STOCK PRICE INDEX WEIGHTED BY FREE FLOAT MARKET CAPITALIZATION ASE20 (2014=1000)

	1407.4	1414.0	0.47%	5.10%
--	--------	--------	-------	-------

Total Return Index ASETR (2021=1074)

	1524.3	1531.4	0.47%	7.08%
--	--------	--------	-------	-------

STOCK PRICE INDEX WEIGHTED BY MARKET CAPITALIZATION (1991=1000)

	MONDAY 27/03/2023	TUESDAY 28/03/2023	% CHANGE	
			DAY BEFORE	YTD
GENERAL	4942.4	4988.0	0.92%	5.45%
BANKS	6814.0	6821.2	0.11%	1.00%
INSURANCE	1304.7	1306.3	0.12%	-1.91%
SERVICES	908.9	917.0	0.89%	7.62%
INDUSTRY	7447.9	7585.4	1.85%	10.22%

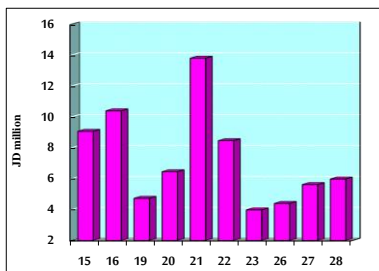
STOCK PRICE MARKET INDEX WEIGHTED BY FREE FLOAT MARKET CAP. (2012=1000)

	MONDAY 27/03/2023	TUESDAY 28/03/2023	% CHANGE	
			DAY BEFORE	YTD
FIRST MARKET	1461.3	1467.8	0.45%	4.20%
SECOND MARKET	779.2	786.7	0.96%	-0.22%

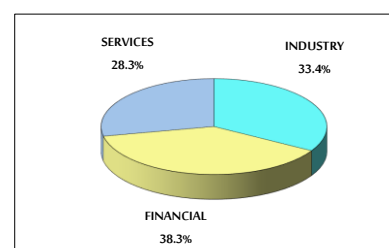
MARKET CAPITALIZATION (JD)

	18,727,939,997	18,898,011,688	0.91%	4.97%
--	----------------	----------------	-------	-------

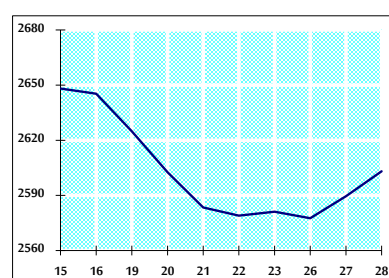
VALUE TRADED FROM 15/3 TO 28/3/2023



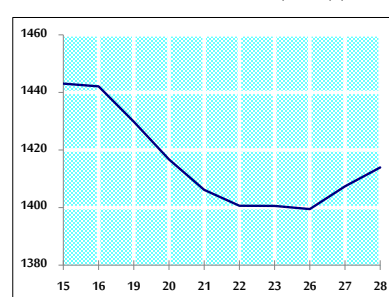
VALUE TRADED BY SECTOR TUESDAY 28/3/2023



GENERAL FREE FLOAT PRICE INDEX FROM 15/3 TO 28/3/2023



ASE20 FREE FLOAT PRICE INDEX FROM 15/3 TO 28/3/2023



GENERAL PRICE INDEX FROM 15/3 TO 28/3/2023

