

## Daily Summary for Amman Stock Exchange

### VALUE TRADED (JD)

	2022	2023	NET CHANGE	CHANGE (%)
Daily	9,665,119	4,418,926	-5,246,193	-54.28%
Cumulative (2/4-6/4)	35,668,154	25,567,688	-10,100,466	-28.32%
Cumulative (2/1-6/4)	422,616,195	559,705,985	137,089,790	32.44%

### NO. OF SHARES TRADED

	2022	2023	NET CHANGE	CHANGE (%)
Daily	3,772,886	3,005,406	-767,480	-20.34%
Cumulative (2/4-6/4)	17,124,463	18,280,577	1,156,114	6.75%
Cumulative (2/1-6/4)	289,329,863	358,850,614	69,520,751	24.03%

### NO. OF TRANSACTIONS

	2022	2023	NET CHANGE	CHANGE (%)
Daily	3,229	2,146	-1,083	-33.54%
Cumulative (2/4-6/4)	12,989	10,614	-2,375	-18.28%
Cumulative (2/1-6/4)	184,530	224,621	40,091	21.73%

### SOME FINANCIAL RATIOS FOR THE ASE (6/4/2023)

SECTOR	P/E	P/BV	DIVIDEND YIELD (%)	TURNOVER (%)
FINANCIAL	10.516	0.819	5.572	0.026
SERVICES	9.976	1.398	5.914	0.036
INDUSTRY	4.758	1.756	6.597	0.218
OVERALL	6.867	1.095	6.264	0.049

### STOCK PRICE INDEX WEIGHTED BY FREE FLOAT MARKET CAPITALIZATION (1999=1000)

	WEDNESDAY 05/04/2023	THURSDAY 06/04/2023	% CHANGE	
			DAY BEFORE	YTD
GENERAL	2538.9	2505.3	-1.32%	0.15%
FINANCIAL	2687.9	2679.1	-0.33%	-0.49%
SERVICES	1847.8	1793.3	-2.95%	3.01%
INDUSTRY	5289.4	5194.9	-1.79%	-1.84%

### STOCK PRICE INDEX WEIGHTED BY FREE FLOAT MARKET CAPITALIZATION ASE20 (2014=1000)

	1374.4	1354.9	-1.42%	0.71%
--	--------	--------	--------	-------

### Total Return Index ASETR (2021=1074)

	1513.5	1504.1	-0.62%	5.17%
--	--------	--------	--------	-------

### STOCK PRICE INDEX WEIGHTED BY MARKET CAPITALIZATION (1991=1000)

	WEDNESDAY 05/04/2023	THURSDAY 06/04/2023	% CHANGE	
			DAY BEFORE	YTD
GENERAL	4742.0	4681.7	-1.27%	-1.03%
BANKS	6653.0	6637.4	-0.24%	-1.72%
INSURANCE	1314.7	1312.4	-0.18%	-1.45%
SERVICES	913.6	909.6	-0.44%	6.75%
INDUSTRY	6902.4	6713.2	-2.74%	-2.45%

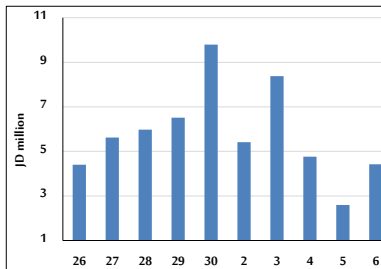
### STOCK PRICE MARKET INDEX WEIGHTED BY FREE FLOAT MARKET CAP. (2012=1000)

	WEDNESDAY 05/04/2023	THURSDAY 06/04/2023	% CHANGE	
			DAY BEFORE	YTD
FIRST MARKET	1429.2	1409.4	-1.39%	0.06%
SECOND MARKET	790.8	792.1	0.15%	0.45%

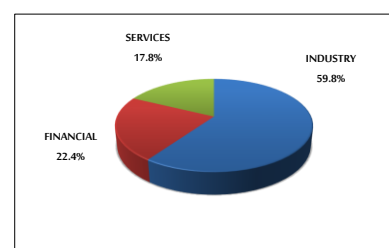
### MARKET CAPITALIZATION (JD)

	18,030,097,267	17,816,594,305	-1.18%	-1.04%
--	----------------	----------------	--------	--------

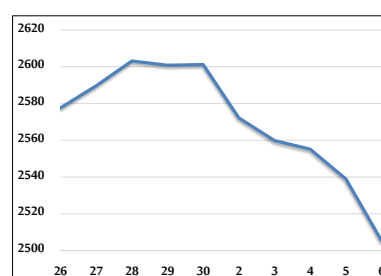
### VALUE TRADED FROM 26/3 TO 6/4/2023



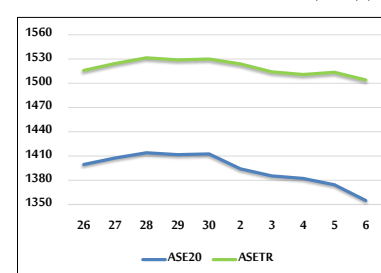
### VALUE TRADED BY SECTOR THURSDAY 6/4/2023



### GENERAL FREE FLOAT PRICE INDEX FROM 26/3 TO 6/4/2023



### ASE20 and ASETR FREE FLOAT PRICE INDEX FROM 26/3 TO 6/4/2023



### STOCK PRICE INDEX FROM 26/3 TO 6/4/2023

