

## Daily Summary for Amman Stock Exchange

### VALUE TRADED (JD)

	2022	2023	NET CHANGE	CHANGE (%)
Daily	12,428,294	3,588,659	-8,839,635	-71.13%
Cumulative (2/4-10/4)	58,163,577	32,937,568	-25,226,009	-43.37%
Cumulative (2/1-10/4)	445,111,618	567,075,865	121,964,247	27.40%

### NO. OF SHARES TRADED

	2022	2023	NET CHANGE	CHANGE (%)
Daily	3,080,125	2,674,400	-405,725	-13.17%
Cumulative (2/4-10/4)	23,941,278	23,212,138	-729,140	-3.05%
Cumulative (2/1-10/4)	296,146,678	363,782,175	67,635,497	22.84%

### NO. OF TRANSACTIONS

	2022	2023	NET CHANGE	CHANGE (%)
Daily	3,529	2,259	-1,270	-35.99%
Cumulative (2/4-10/4)	20,136	14,811	-5,325	-26.45%
Cumulative (2/1-10/4)	191,677	228,818	37,141	19.38%

### SOME FINANCIAL RATIOS FOR THE ASE (10/4/2023)

SECTOR	P/E	P/BV	DIVIDEND YIELD (%)	TURNOVER (%)
FINANCIAL	10.567	0.823	5.545	0.035
SERVICES	9.711	1.361	6.361	0.027
INDUSTRY	4.508	1.664	6.962	0.131
OVERALL	6.718	1.072	6.449	0.044

### STOCK PRICE INDEX WEIGHTED BY FREE FLOAT MARKET CAPITALIZATION (1999=1000)

	SUNDAY 09/04/2023	MONDAY 10/04/2023	% CHANGE	
			DAY BEFORE	YTD
GENERAL	2486.3	2469.1	-0.69%	-1.30%
FINANCIAL	2681.9	2682.3	0.02%	-0.37%
SERVICES	1757.2	1732.4	-1.41%	-0.49%
INDUSTRY	5113.4	5010.7	-2.01%	-5.32%

### STOCK PRICE INDEX WEIGHTED BY FREE FLOAT MARKET CAPITALIZATION ASE20 (2014=1000)

	1343.8	1334.1	-0.72%	-0.83%
--	--------	--------	--------	--------

### Total Return Index ASETR (2021=1074)

	1491.8	1481.7	-0.68%	3.60%
--	--------	--------	--------	-------

### STOCK PRICE INDEX WEIGHTED BY MARKET CAPITALIZATION (1991=1000)

	SUNDAY 09/04/2023	MONDAY 10/04/2023	% CHANGE	
			DAY BEFORE	YTD
GENERAL	4632.2	4580.0	-1.13%	-3.18%
BANKS	6658.2	6677.1	0.28%	-1.13%
INSURANCE	1303.3	1295.4	-0.61%	-2.73%
SERVICES	906.5	898.2	-0.92%	5.41%
INDUSTRY	6517.0	6325.1	-2.94%	-8.09%

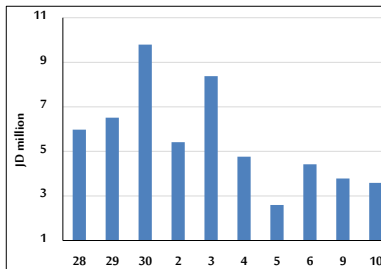
### STOCK PRICE MARKET INDEX WEIGHTED BY FREE FLOAT MARKET CAP. (2012=1000)

	SUNDAY 09/04/2023	MONDAY 10/04/2023	% CHANGE	
			DAY BEFORE	YTD
FIRST MARKET	1398.5	1387.9	-0.76%	-1.47%
SECOND MARKET	790.9	790.7	-0.03%	0.28%

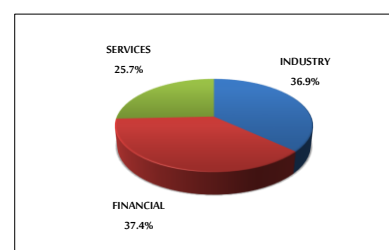
### MARKET CAPITALIZATION (JD)

	17,640,181,839	17,452,395,508	-1.06%	-3.06%
--	----------------	----------------	--------	--------

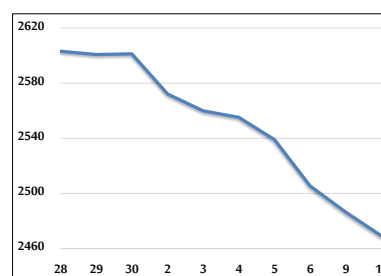
### VALUE TRADED FROM 28/3 TO 10/4/2023



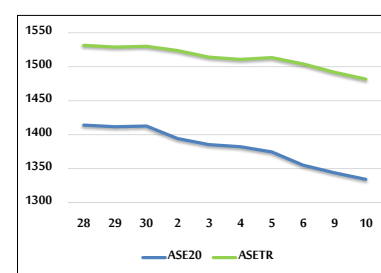
### VALUE TRADED BY SECTOR MONDAY 10/4/2023



### GENERAL FREE FLOAT PRICE INDEX FROM 28/3 TO 10/4/2023



### ASE20 and ASETR FREE FLOAT PRICE INDEX FROM 28/3 TO 10/4/2023



### STOCK PRICE INDEX FROM 28/3 TO 10/4/2023

