

Daily Summary for Amman Stock Exchange

VALUE TRADED (JD)

	2022	2023	NET CHANGE	CHANGE (%)
Daily	7,494,166	7,897,888	403,722	5.39%
Cumulative (4/6-8/6)	49,975,289	26,440,479	-23,534,810	-47.09%
Cumulative (2/1-8/6)	792,146,469	787,728,281	-4,418,188	-0.56%

NO. OF SHARES TRADED

	2022	2023	NET CHANGE	CHANGE (%)
Daily	3,822,228	6,150,958	2,328,730	60.93%
Cumulative (4/6-8/6)	22,931,906	20,006,120	-2,925,786	-12.76%
Cumulative (2/1-8/6)	462,142,328	528,359,137	66,216,809	14.33%

NO. OF TRANSACTIONS

	2022	2023	NET CHANGE	CHANGE (%)
Daily	3,292	4,341	1,049	31.87%
Cumulative (4/6-8/6)	15,727	16,143	416	2.65%
Cumulative (2/1-8/6)	316,656	340,452	23,796	7.51%

SOME FINANCIAL RATIOS FOR THE ASE (8/6/2023)

SECTOR	P/E	P/BV	DIVIDEND YIELD (%)	TURNOVER (%)
FINANCIAL	9.774	0.799	5.761	0.066
SERVICES	10.055	1.380	6.367	0.109
INDUSTRY	5.314	1.852	6.258	0.240
OVERALL	7.041	1.104	6.274	0.098

STOCK PRICE INDEX WEIGHTED BY FREE FLOAT MARKET CAPITALIZATION (1999=1000)

	WEDNESDAY 07/06/2023	THURSDAY 08/06/2023	% CHANGE	
			DAY BEFORE	YTD
GENERAL	2502.6	2511.2	0.34%	0.38%
FINANCIAL	2649.6	2652.5	0.11%	-1.48%
SERVICES	1763.6	1770.1	0.37%	1.68%
INDUSTRY	5443.3	5492.3	0.90%	3.78%

STOCK PRICE INDEX WEIGHTED BY FREE FLOAT MARKET CAPITALIZATION ASE20 (2014=1000)

	1345.7	1350.4	0.35%	0.38%
--	--------	--------	-------	-------

Total Return Index ASETR (2021=1074)

	1530.4	1535.7	0.35%	7.38%
--	--------	--------	-------	-------

STOCK PRICE INDEX WEIGHTED BY MARKET CAPITALIZATION (1991=1000)

	WEDNESDAY 07/06/2023	THURSDAY 08/06/2023	% CHANGE	
			DAY BEFORE	YTD
GENERAL	4702.3	4717.4	0.32%	-0.27%
BANKS	6461.3	6452.8	-0.13%	-4.45%
INSURANCE	1337.5	1327.6	-0.74%	-0.31%
SERVICES	903.3	904.8	0.17%	6.19%
INDUSTRY	7006.4	7067.5	0.87%	2.69%

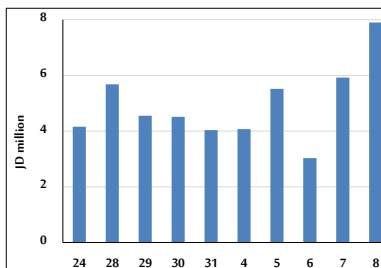
STOCK PRICE MARKET INDEX WEIGHTED BY FREE FLOAT MARKET CAP. (2012=1000)

	WEDNESDAY 07/06/2023	THURSDAY 08/06/2023	% CHANGE	
			DAY BEFORE	YTD
FIRST MARKET	1399.0	1402.6	0.26%	-0.42%
SECOND MARKET	834.7	842.6	0.95%	6.85%

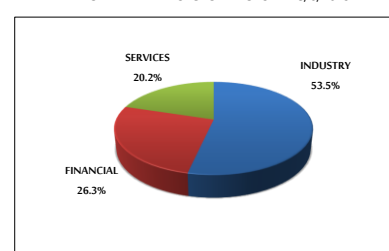
MARKET CAPITALIZATION (JD)

	17,861,395,814	17,907,769,205	0.26%	-0.53%
--	----------------	----------------	-------	--------

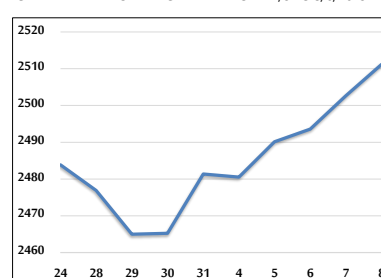
VALUE TRADED FROM 24/5 TO 8/6/2023



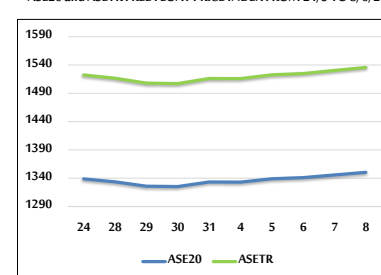
VALUE TRADED BY SECTOR THURSDAY 8/6/2023



GENERAL FREE FLOAT PRICE INDEX FROM 24/5 TO 8/6/2023



ASE20 and ASETR FREE FLOAT PRICE INDEX FROM 24/5 TO 8/6/2023



STOCK PRICE INDEX FROM 24/5 TO 8/6/2023

