

Daily Summary for Amman Stock Exchange

VALUE TRADED (JD)

	2022	2023	NET CHANGE	CHANGE (%)
Daily	6,507,169	7,718,450	1,211,281	18.61%
Cumulative (4/6-11/6)	56,482,458	34,158,929	-22,323,529	-39.52%
Cumulative (2/1-11/6)	798,653,638	795,446,731	-3,206,907	-0.40%

NO. OF SHARES TRADED

	2022	2023	NET CHANGE	CHANGE (%)
Daily	4,308,124	5,914,104	1,605,980	37.28%
Cumulative (4/6-11/6)	27,240,030	25,920,224	-1,319,806	-4.85%
Cumulative (2/1-11/6)	466,450,452	534,273,241	67,822,789	14.54%

NO. OF TRANSACTIONS

	2022	2023	NET CHANGE	CHANGE (%)
Daily	2,981	3,623	642	21.54%
Cumulative (4/6-11/6)	18,708	19,766	1,058	5.66%
Cumulative (2/1-11/6)	319,637	344,075	24,438	7.65%

SOME FINANCIAL RATIOS FOR THE ASE (11/6/2023)

SECTOR	P/E	P/BV	DIVIDEND YIELD (%)	TURNOVER (%)
FINANCIAL	9.728	0.795	5.789	0.050
SERVICES	10.060	1.381	6.363	0.057
INDUSTRY	5.360	1.868	6.204	0.371
OVERALL	7.049	1.105	6.266	0.094

STOCK PRICE INDEX WEIGHTED BY FREE FLOAT MARKET CAPITALIZATION (1999=1000)

	THURSDAY 08/06/2023	SUNDAY 11/06/2023	% CHANGE	
			DAY BEFORE	YTD
GENERAL	2511.2	2510.4	-0.03%	0.35%
FINANCIAL	2652.5	2643.4	-0.34%	-1.81%
SERVICES	1770.1	1772.4	0.13%	1.81%
INDUSTRY	5492.3	5533.5	0.75%	4.56%

STOCK PRICE INDEX WEIGHTED BY FREE FLOAT MARKET CAPITALIZATION ASE20 (2014=1000)

	1350.4	1351.1	0.05%	0.43%
--	--------	--------	-------	-------

Total Return Index ASETR (2021=1074)

	1535.7	1536.5	0.05%	7.44%
--	--------	--------	-------	-------

STOCK PRICE INDEX WEIGHTED BY MARKET CAPITALIZATION (1991=1000)

	THURSDAY 08/06/2023	SUNDAY 11/06/2023	% CHANGE	
			DAY BEFORE	YTD
GENERAL	4717.4	4722.9	0.12%	-0.16%
BANKS	6452.8	6422.4	-0.47%	-4.90%
INSURANCE	1327.6	1326.8	-0.06%	-0.37%
SERVICES	904.8	902.5	-0.26%	5.91%
INDUSTRY	7067.5	7129.6	0.88%	3.60%

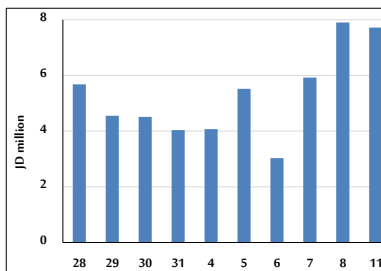
STOCK PRICE MARKET INDEX WEIGHTED BY FREE FLOAT MARKET CAP. (2012=1000)

	THURSDAY 08/06/2023	SUNDAY 11/06/2023	% CHANGE	
			DAY BEFORE	YTD
FIRST MARKET	1402.6	1403.4	0.05%	-0.37%
SECOND MARKET	842.6	839.2	-0.40%	6.42%

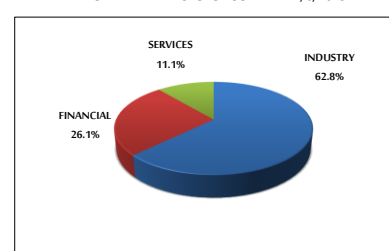
MARKET CAPITALIZATION (JD)

	17,907,769,205	17,927,680,771	0.11%	-0.42%
--	----------------	----------------	-------	--------

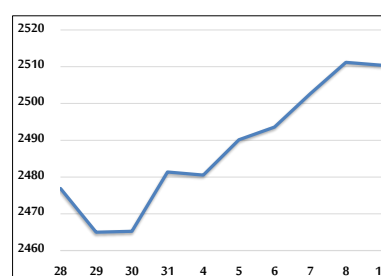
VALUE TRADED FROM 28/5 TO 11/6/2023



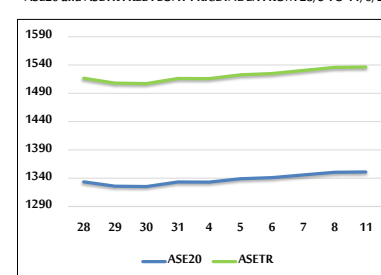
VALUE TRADED BY SECTOR SUNDAY 11/6/2023



GENERAL FREE FLOAT PRICE INDEX FROM 28/5 TO 11/6/2023



ASE20 and ASETR FREE FLOAT PRICE INDEX FROM 28/5 TO 11/6/2023



STOCK PRICE INDEX FROM 28/5 TO 11/6/2023

