

## Daily Summary for Amman Stock Exchange

### VALUE TRADED (JD)

	2022	2023	NET CHANGE	CHANGE (%)
Daily	8,022,316	7,398,489	-623,827	-7.78%
Cumulative (4/6-12/6)	64,504,774	41,557,418	-22,947,356	-35.57%
Cumulative (2/1-12/6)	806,675,954	802,845,220	-3,830,734	-0.47%

### NO. OF SHARES TRADED

	2022	2023	NET CHANGE	CHANGE (%)
Daily	5,455,543	4,784,880	-670,663	-12.29%
Cumulative (4/6-12/6)	32,695,573	30,705,104	-1,990,469	-6.09%
Cumulative (2/1-12/6)	471,905,995	539,058,121	67,152,126	14.23%

### NO. OF TRANSACTIONS

	2022	2023	NET CHANGE	CHANGE (%)
Daily	2,996	3,264	268	8.95%
Cumulative (4/6-12/6)	21,704	23,030	1,326	6.11%
Cumulative (2/1-12/6)	322,633	347,339	24,706	7.66%

### SOME FINANCIAL RATIOS FOR THE ASE (12/6/2023)

SECTOR	P/E	P/BV	DIVIDEND YIELD (%)	TURNOVER (%)
FINANCIAL	9.672	0.791	5.822	0.068
SERVICES	9.999	1.373	6.403	0.055
INDUSTRY	5.281	1.840	6.297	0.148
OVERALL	6.979	1.094	6.329	0.076

### STOCK PRICE INDEX WEIGHTED BY FREE FLOAT MARKET CAPITALIZATION (1999=1000)

	SUNDAY 11/06/2023	MONDAY 12/06/2023	% CHANGE	
			DAY BEFORE	YTD
GENERAL	2510.4	2485.7	-0.98%	-0.64%
FINANCIAL	2643.4	2619.4	-0.91%	-2.71%
SERVICES	1772.4	1762.6	-0.55%	1.25%
INDUSTRY	5533.5	5456.8	-1.39%	3.11%

### STOCK PRICE INDEX WEIGHTED BY FREE FLOAT MARKET CAPITALIZATION ASE20 (2014=1000)

	1351.1	1336.9	-1.05%	-0.63%
--	--------	--------	--------	--------

### Total Return Index ASETR (2021=1074)

	1536.5	1520.4	-1.05%	6.31%
--	--------	--------	--------	-------

### STOCK PRICE INDEX WEIGHTED BY MARKET CAPITALIZATION (1991=1000)

	SUNDAY 11/06/2023	MONDAY 12/06/2023	% CHANGE	
			DAY BEFORE	YTD
GENERAL	4722.9	4676.0	-0.99%	-1.15%
BANKS	6422.4	6384.2	-0.60%	-5.47%
INSURANCE	1326.8	1318.5	-0.62%	-0.99%
SERVICES	902.5	897.6	-0.53%	5.35%
INDUSTRY	7129.6	7019.0	-1.55%	1.99%

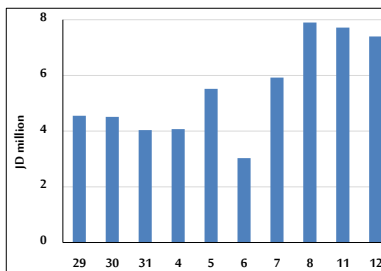
### STOCK PRICE MARKET INDEX WEIGHTED BY FREE FLOAT MARKET CAP. (2012=1000)

	SUNDAY 11/06/2023	MONDAY 12/06/2023	% CHANGE	
			DAY BEFORE	YTD
FIRST MARKET	1403.4	1389.0	-1.02%	-1.39%
SECOND MARKET	839.2	839.1	-0.01%	6.41%

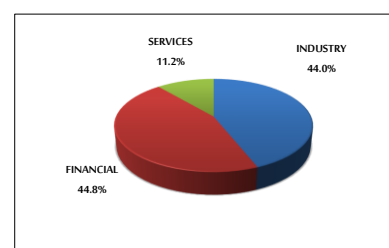
### MARKET CAPITALIZATION (JD)

	17,927,680,771	17,762,173,688	-0.92%	-1.34%
--	----------------	----------------	--------	--------

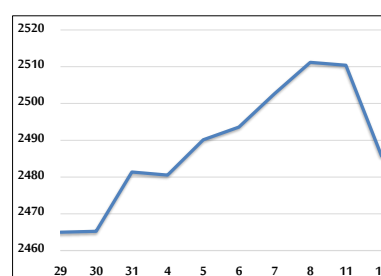
### VALUE TRADED FROM 29/5 TO 12/6/2023



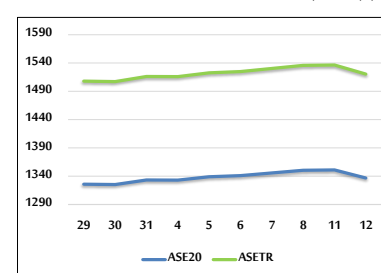
### VALUE TRADED BY SECTOR MONDAY 12/6/2023



### GENERAL FREE FLOAT PRICE INDEX FROM 29/5 TO 12/6/2023



### ASE20 and ASETR FREE FLOAT PRICE INDEX FROM 29/5 TO 12/6/2023



### STOCK PRICE INDEX FROM 29/5 TO 12/6/2023

