

## Daily Summary for Amman Stock Exchange

### VALUE TRADED (JD)

	2022	2023	NET CHANGE	CHANGE (%)
Daily	4,855,459	4,867,982	12,523	0.26%
Cumulative (4/6-13/6)	69,360,233	46,425,400	-22,934,833	-33.07%
Cumulative (2/1-13/6)	811,531,413	807,713,202	-3,818,211	-0.47%

### NO. OF SHARES TRADED

	2022	2023	NET CHANGE	CHANGE (%)
Daily	3,329,221	4,206,200	876,979	26.34%
Cumulative (4/6-13/6)	36,024,794	34,911,304	-1,113,490	-3.09%
Cumulative (2/1-13/6)	475,235,216	543,264,321	68,029,105	14.31%

### NO. OF TRANSACTIONS

	2022	2023	NET CHANGE	CHANGE (%)
Daily	2,504	2,872	368	14.70%
Cumulative (4/6-13/6)	24,208	25,902	1,694	7.00%
Cumulative (2/1-13/6)	325,137	350,211	25,074	7.71%

### SOME FINANCIAL RATIOS FOR THE ASE (13/6/2023)

SECTOR	P/E	P/BV	DIVIDEND YIELD (%)	TURNOVER (%)
FINANCIAL	9.676	0.791	5.820	0.051
SERVICES	9.986	1.371	6.411	0.023
INDUSTRY	5.257	1.832	6.326	0.212
OVERALL	6.966	1.092	6.341	0.067

### STOCK PRICE INDEX WEIGHTED BY FREE FLOAT MARKET CAPITALIZATION (1999=1000)

	MONDAY 12/06/2023	TUESDAY 13/06/2023	% CHANGE	
			DAY BEFORE	YTD
GENERAL	2485.7	2485.8	0.00%	-0.63%
FINANCIAL	2619.4	2625.6	0.24%	-2.48%
SERVICES	1762.6	1756.3	-0.36%	0.89%
INDUSTRY	5456.8	5439.8	-0.31%	2.79%

### STOCK PRICE INDEX WEIGHTED BY FREE FLOAT MARKET CAPITALIZATION ASE20 (2014=1000)

	1336.9	1335.7	-0.09%	-0.72%
--	--------	--------	--------	--------

### Total Return Index ASETR (2021=1074)

	1520.4	1519.0	-0.09%	6.21%
--	--------	--------	--------	-------

### STOCK PRICE INDEX WEIGHTED BY MARKET CAPITALIZATION (1991=1000)

	MONDAY 12/06/2023	TUESDAY 13/06/2023	% CHANGE	
			DAY BEFORE	YTD
GENERAL	4676.0	4667.6	-0.18%	-1.33%
BANKS	6384.2	6385.7	0.02%	-5.45%
INSURANCE	1318.5	1310.7	-0.59%	-1.58%
SERVICES	897.6	898.9	0.14%	5.49%
INDUSTRY	7019.0	6985.2	-0.48%	1.50%

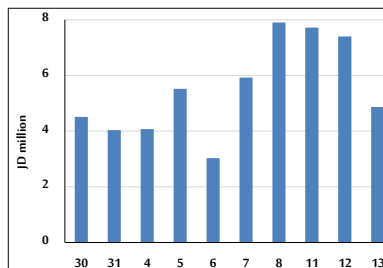
### STOCK PRICE MARKET INDEX WEIGHTED BY FREE FLOAT MARKET CAP. (2012=1000)

	MONDAY 12/06/2023	TUESDAY 13/06/2023	% CHANGE	
			DAY BEFORE	YTD
FIRST MARKET	1389.0	1388.6	-0.03%	-1.42%
SECOND MARKET	839.1	839.6	0.06%	6.48%

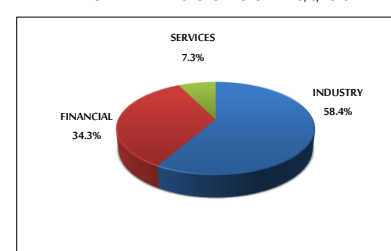
### MARKET CAPITALIZATION (JD)

	17,762,173,688	17,731,989,397	-0.17%	-1.51%
--	----------------	----------------	--------	--------

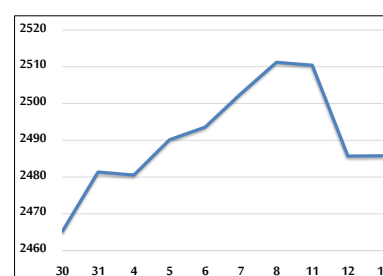
### VALUE TRADED FROM 30/5 TO 13/6/2023



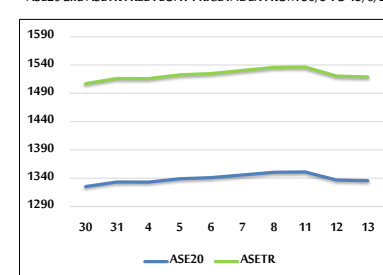
### VALUE TRADED BY SECTOR TUESDAY 13/6/2023



### GENERAL FREE FLOAT PRICE INDEX FROM 30/5 TO 13/6/2023



### ASE20 and ASETR FREE FLOAT PRICE INDEX FROM 30/5 TO 13/6/2023



### STOCK PRICE INDEX FROM 30/5 TO 13/6/2023

