

Daily Summary for Amman Stock Exchange

VALUE TRADED (JD)

	2022	2023	NET CHANGE	CHANGE (%)
Daily	4,998,817	4,486,983	-511,834	-10.24%
Cumulative (4/6-14/6)	74,359,050	50,912,383	-23,446,667	-31.53%
Cumulative (2/1-14/6)	816,530,230	812,200,185	-4,330,045	-0.53%

NO. OF SHARES TRADED

	2022	2023	NET CHANGE	CHANGE (%)
Daily	3,431,119	6,042,790	2,611,671	76.12%
Cumulative (4/6-14/6)	39,455,913	40,954,094	1,498,181	3.80%
Cumulative (2/1-14/6)	478,666,335	549,307,111	70,640,776	14.76%

NO. OF TRANSACTIONS

	2022	2023	NET CHANGE	CHANGE (%)
Daily	3,026	2,865	-161	-5.32%
Cumulative (4/6-14/6)	27,234	28,767	1,533	5.63%
Cumulative (2/1-14/6)	328,163	353,076	24,913	7.59%

SOME FINANCIAL RATIOS FOR THE ASE (14/6/2023)

SECTOR	P/E	P/BV	DIVIDEND YIELD (%)	TURNOVER (%)
FINANCIAL	9.660	0.790	5.829	0.054
SERVICES	9.954	1.366	6.431	0.178
INDUSTRY	5.232	1.823	6.356	0.183
OVERALL	6.942	1.088	6.363	0.096

STOCK PRICE INDEX WEIGHTED BY FREE FLOAT MARKET CAPITALIZATION (1999=1000)

	TUESDAY 13/06/2023	WEDNESDAY 14/06/2023	% CHANGE	
			DAY BEFORE	YTD
GENERAL	2485.8	2477.2	-0.35%	-0.98%
FINANCIAL	2625.6	2620.0	-0.21%	-2.68%
SERVICES	1756.3	1753.5	-0.16%	0.73%
INDUSTRY	5439.8	5408.0	-0.58%	2.19%

STOCK PRICE INDEX WEIGHTED BY FREE FLOAT MARKET CAPITALIZATION ASE20 (2014=1000)

	1335.7	1331.3	-0.32%	-1.04%
--	--------	--------	--------	--------

Total Return Index ASETR (2021=1074)

	1519.0	1514.1	-0.32%	5.87%
--	--------	--------	--------	-------

STOCK PRICE INDEX WEIGHTED BY MARKET CAPITALIZATION (1991=1000)

	TUESDAY 13/06/2023	WEDNESDAY 14/06/2023	% CHANGE	
			DAY BEFORE	YTD
GENERAL	4667.6	4651.4	-0.35%	-1.67%
BANKS	6385.7	6374.7	-0.17%	-5.61%
INSURANCE	1310.7	1308.0	-0.20%	-1.78%
SERVICES	898.9	896.1	-0.30%	5.17%
INDUSTRY	6985.2	6946.4	-0.56%	0.93%

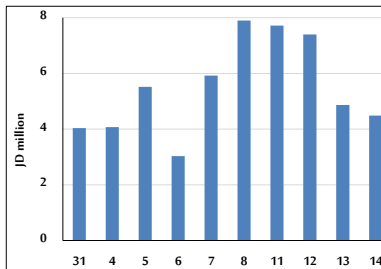
STOCK PRICE MARKET INDEX WEIGHTED BY FREE FLOAT MARKET CAP. (2012=1000)

	TUESDAY 13/06/2023	WEDNESDAY 14/06/2023	% CHANGE	
			DAY BEFORE	YTD
FIRST MARKET	1388.6	1383.9	-0.34%	-1.75%
SECOND MARKET	839.6	840.0	0.05%	6.53%

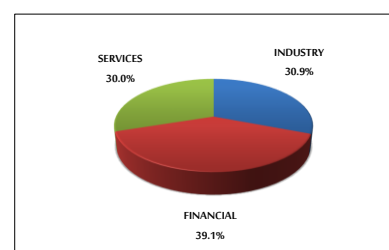
MARKET CAPITALIZATION (JD)

	17,731,989,397	17,678,066,035	-0.30%	-1.81%
--	----------------	----------------	--------	--------

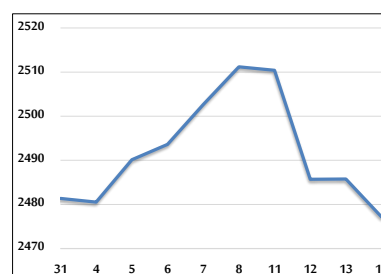
VALUE TRADED FROM 31/5 TO 14/6/2023



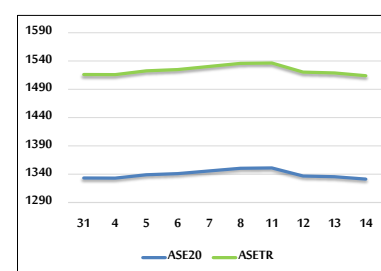
VALUE TRADED BY SECTOR WEDNESDAY 14/6/2023



GENERAL FREE FLOAT PRICE INDEX FROM 31/5 TO 14/6/2023



ASE20 and ASETR FREE FLOAT PRICE INDEX FROM 31/5 TO 14/6/2023



STOCK PRICE INDEX FROM 31/5 TO 14/6/2023

