

Daily Summary for Amman Stock Exchange

VALUE TRADED (JD)

	2023	2024	NET CHANGE	CHANGE (%)
Daily	8,608,624	6,272,021	-2,336,603	-27.14%
Cumulative (1/4-30/4)	111,376,764	96,550,708	-14,826,056	-13.31%
Cumulative (2/1-30/4)	645,515,061	381,924,416	-263,590,645	-40.83%

NO. OF SHARES TRADED

	2023	2024	NET CHANGE	CHANGE (%)
Daily	4,517,910	5,379,825	861,915	19.08%
Cumulative (1/4-30/4)	64,139,017	62,514,228	-1,624,789	-2.53%
Cumulative (2/1-30/4)	404,709,054	293,205,110	-111,503,944	-27.55%

NO. OF TRANSACTIONS

	2023	2024	NET CHANGE	CHANGE (%)
Daily	2,861	2,701	-160	-5.59%
Cumulative (1/4-30/4)	43,493	43,690	197	0.45%
Cumulative (2/1-30/4)	257,500	193,423	-64,077	-24.88%

SOME FINANCIAL RATIOS FOR THE ASE (30/4/2024)

SECTOR	P/E	P/BV	DIVIDEND YIELD (%)	TURNOVER (%)
FINANCIAL	8.734	0.747	6.018	0.048
SERVICES	11.425	1.278	6.069	0.117
INDUSTRY	7.352	1.417	8.059	0.266
OVERALL	8.019	0.956	7.098	0.088

STOCK PRICE INDEX WEIGHTED BY FREE FLOAT MARKET CAPITALIZATION (1999=1000)

	MONDAY 29/04/2024	TUESDAY 30/04/2024	% CHANGE	
			DAY BEFORE	YTD
GENERAL	2431.2	2390.6	-1.67%	-1.67%
FINANCIAL	2634.2	2613.1	-0.80%	-4.25%
SERVICES	1657.3	1649.9	-0.45%	0.36%
INDUSTRY	5173.5	4909.7	-5.10%	4.05%

STOCK PRICE INDEX WEIGHTED BY FREE FLOAT MARKET CAPITALIZATION ASE20 (2014=1000)

	1314.3	1290.1	-1.85%	-1.43%
--	--------	--------	--------	--------

Total Return Index ASETR (2021=1074)

	1575.0	1575.6	0.04%	5.86%
--	--------	--------	-------	-------

STOCK PRICE INDEX WEIGHTED BY MARKET CAPITALIZATION (1991=1000)

	MONDAY 29/04/2024	TUESDAY 30/04/2024	% CHANGE	
			DAY BEFORE	YTD
GENERAL	4491.2	4356.6	-3.00%	-1.35%
BANKS	6503.0	6431.2	-1.10%	-4.52%
INSURANCE	1322.5	1325.9	0.26%	3.19%
SERVICES	864.8	865.2	0.04%	-1.53%
INDUSTRY	6272.7	5882.1	-6.23%	3.07%

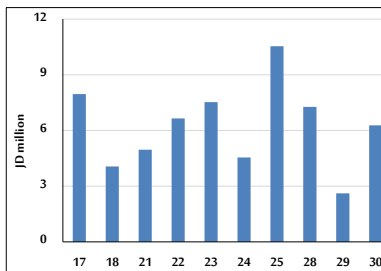
STOCK PRICE MARKET INDEX WEIGHTED BY FREE FLOAT MARKET CAP. (2012=1000)

	MONDAY 29/04/2024	TUESDAY 30/04/2024	% CHANGE	
			DAY BEFORE	YTD
FIRST MARKET	1363.4	1339.7	-1.74%	-1.42%
SECOND MARKET	816.4	810.2	-0.77%	-6.26%

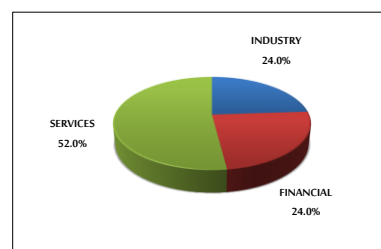
MARKET CAPITALIZATION (JD)

	17,063,263,600	16,603,977,819	-2.69%	-1.98%
--	----------------	----------------	--------	--------

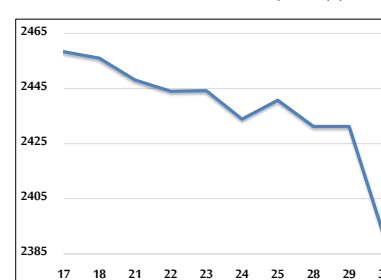
VALUE TRADED FROM 17/4 TO 30/4/2024



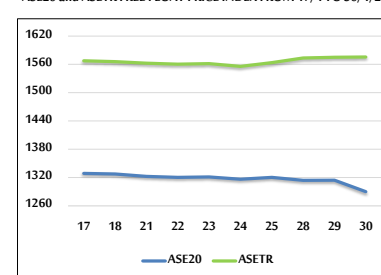
VALUE TRADED BY SECTOR TUESDAY 30/4/2024



GENERAL FREE FLOAT PRICE INDEX FROM 17/4 TO 30/4/2024



ASE20 and ASETR FREE FLOAT PRICE INDEX FROM 17/4 TO 30/4/2024



STOCK PRICE INDEX FROM 17/4 TO 30/4/2024

