

Daily Summary for Amman Stock Exchange

VALUE TRADED (JD)

	2023	2024	NET CHANGE	CHANGE (%)
Daily	5,677,840	3,017,330	-2,660,510	-46.86%
Cumulative (1/5-5/5)	12,519,157	8,907,670	-3,611,487	-28.85%
Cumulative (2/1-5/5)	658,034,218	390,832,086	-267,202,132	-40.61%

NO. OF SHARES TRADED

	2023	2024	NET CHANGE	CHANGE (%)
Daily	4,575,869	1,873,394	-2,702,475	-59.06%
Cumulative (1/5-5/5)	8,514,747	5,567,796	-2,946,951	-34.61%
Cumulative (2/1-5/5)	413,223,801	298,772,906	-114,450,895	-27.70%

NO. OF TRANSACTIONS

	2023	2024	NET CHANGE	CHANGE (%)
Daily	3,158	2,077	-1,081	-34.23%
Cumulative (1/5-5/5)	6,193	4,648	-1,545	-24.95%
Cumulative (2/1-5/5)	263,693	198,071	-65,622	-24.89%

SOME FINANCIAL RATIOS FOR THE ASE (5/5/2024)

SECTOR	P/E	P/BV	DIVIDEND YIELD (%)	TURNOVER (%)
FINANCIAL	8.598	0.746	6.022	0.024
SERVICES	11.718	1.264	6.136	0.040
INDUSTRY	7.649	1.332	8.572	0.049
OVERALL	8.083	0.932	7.277	0.031

STOCK PRICE INDEX WEIGHTED BY FREE FLOAT MARKET CAPITALIZATION (1999=1000)

	WEDNESDAY 01/05/2024	SUNDAY 05/05/2024	% CHANGE	
			DAY BEFORE	YTD
GENERAL	2365.4	2360.5	-0.21%	-2.91%
FINANCIAL	2613.8	2607.6	-0.24%	-4.45%
SERVICES	1639.2	1635.3	-0.23%	-0.53%
INDUSTRY	4673.1	4665.0	-0.17%	-1.14%

STOCK PRICE INDEX WEIGHTED BY FREE FLOAT MARKET CAPITALIZATION ASE20 (2014=1000)

	1274.3	1271.7	-0.20%	-2.83%
--	--------	--------	--------	--------

Total Return Index ASETR (2021=1074)

	1556.4	1553.3	-0.20%	4.35%
--	--------	--------	--------	-------

STOCK PRICE INDEX WEIGHTED BY MARKET CAPITALIZATION (1991=1000)

	WEDNESDAY 01/05/2024	SUNDAY 05/05/2024	% CHANGE	
			DAY BEFORE	YTD
GENERAL	4255.2	4249.0	-0.15%	-3.79%
BANKS	6438.9	6423.7	-0.24%	-4.63%
INSURANCE	1332.2	1334.4	0.17%	3.85%
SERVICES	857.1	856.2	-0.11%	-2.56%
INDUSTRY	5530.8	5528.4	-0.04%	-3.12%

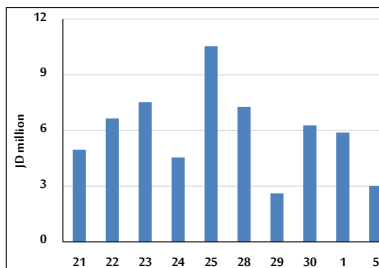
STOCK PRICE MARKET INDEX WEIGHTED BY FREE FLOAT MARKET CAP. (2012=1000)

	WEDNESDAY 01/05/2024	SUNDAY 05/05/2024	% CHANGE	
			DAY BEFORE	YTD
FIRST MARKET	1323.7	1321.0	-0.20%	-2.79%
SECOND MARKET	814.2	812.9	-0.15%	-5.94%

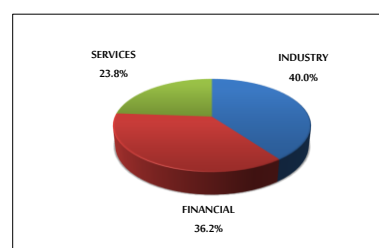
MARKET CAPITALIZATION (JD)

	16,255,334,121	16,235,800,916	-0.12%	-4.15%
--	----------------	----------------	--------	--------

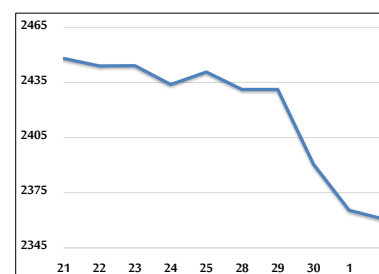
VALUE TRADED FROM 21/4 TO 5/5/2024



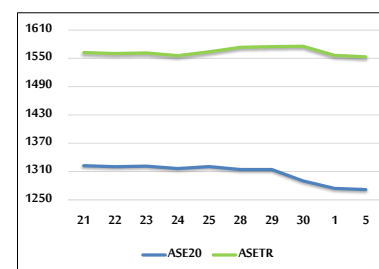
VALUE TRADED BY SECTOR SUNDAY 5/5/2024



GENERAL FREE FLOAT PRICE INDEX FROM 21/4 TO 5/5/2024



ASE20 and ASETR FREE FLOAT PRICE INDEX FROM 21/4 TO 5/5/2024



STOCK PRICE INDEX FROM 21/4 TO 5/5/2024

