

## Daily Summary for Amman Stock Exchange

### VALUE TRADED (JD)

	2023	2024	NET CHANGE	CHANGE (%)
Daily	5,186,929	2,742,229	-2,444,700	-47.13%
Cumulative (1/5-6/5)	17,706,086	11,649,899	-6,056,187	-34.20%
Cumulative (2/1-6/5)	663,221,147	393,574,315	-269,646,832	-40.66%

### NO. OF SHARES TRADED

	2023	2024	NET CHANGE	CHANGE (%)
Daily	3,999,859	1,698,759	-2,301,100	-57.53%
Cumulative (1/5-6/5)	12,514,606	7,266,555	-5,248,051	-41.94%
Cumulative (2/1-6/5)	417,223,660	300,471,665	-116,751,995	-27.98%

### NO. OF TRANSACTIONS

	2023	2024	NET CHANGE	CHANGE (%)
Daily	2,833	1,789	-1,044	-36.85%
Cumulative (1/5-6/5)	9,026	6,437	-2,589	-28.68%
Cumulative (2/1-6/5)	266,526	199,860	-66,666	-25.01%

### SOME FINANCIAL RATIOS FOR THE ASE (6/5/2024)

SECTOR	P/E	P/BV	DIVIDEND YIELD (%)	TURNOVER (%)
FINANCIAL	8.542	0.741	6.062	0.021
SERVICES	11.689	1.261	6.150	0.042
INDUSTRY	7.648	1.332	8.574	0.039
OVERALL	8.049	0.928	7.308	0.028

### STOCK PRICE INDEX WEIGHTED BY FREE FLOAT MARKET CAPITALIZATION (1999=1000)

	SUNDAY 05/05/2024	MONDAY 06/05/2024	% CHANGE	
			DAY BEFORE	YTD
GENERAL	2360.5	2354.3	-0.26%	-3.16%
FINANCIAL	2607.6	2600.4	-0.28%	-4.71%
SERVICES	1635.3	1629.8	-0.34%	-0.87%
INDUSTRY	4665.0	4665.9	0.02%	-1.12%

### STOCK PRICE INDEX WEIGHTED BY FREE FLOAT MARKET CAPITALIZATION ASE20 (2014=1000)

	1271.7	1267.6	-0.33%	-3.15%
--	--------	--------	--------	--------

### Total Return Index ASETR (2021=1074)

	1553.3	1548.2	-0.33%	4.01%
--	--------	--------	--------	-------

### STOCK PRICE INDEX WEIGHTED BY MARKET CAPITALIZATION (1991=1000)

	SUNDAY 05/05/2024	MONDAY 06/05/2024	% CHANGE	
			DAY BEFORE	YTD
GENERAL	4249.0	4231.3	-0.42%	-4.19%
BANKS	6423.7	6374.3	-0.77%	-5.36%
INSURANCE	1334.4	1336.2	0.13%	3.99%
SERVICES	856.2	855.9	-0.03%	-2.58%
INDUSTRY	5528.4	5525.1	-0.06%	-3.18%

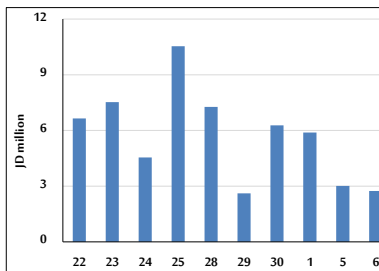
### STOCK PRICE MARKET INDEX WEIGHTED BY FREE FLOAT MARKET CAP. (2012=1000)

	SUNDAY 05/05/2024	MONDAY 06/05/2024	% CHANGE	
			DAY BEFORE	YTD
FIRST MARKET	1321.0	1316.8	-0.32%	-3.10%
SECOND MARKET	812.9	817.3	0.54%	-5.43%

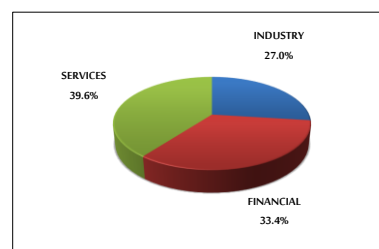
### MARKET CAPITALIZATION (JD)

	16,235,800,916	16,173,554,407	-0.38%	-4.52%
--	----------------	----------------	--------	--------

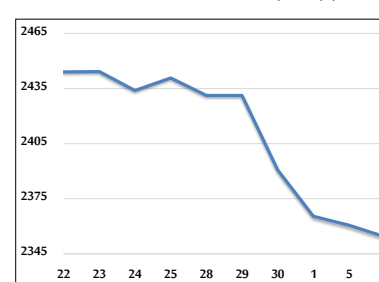
### VALUE TRADED FROM 22/4 TO 6/5/2024



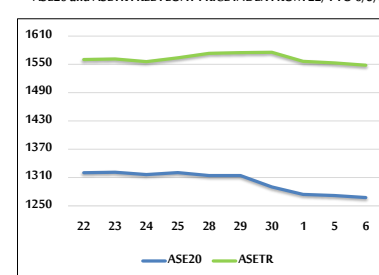
### VALUE TRADED BY SECTOR MONDAY 6/5/2024



### GENERAL FREE FLOAT PRICE INDEX FROM 22/4 TO 6/5/2024



### ASE20 and ASETR FREE FLOAT PRICE INDEX FROM 22/4 TO 6/5/2024



### STOCK PRICE INDEX FROM 22/4 TO 6/5/2024

