

## Daily Summary for Amman Stock Exchange

### VALUE TRADED (JD)

	2023	2024	NET CHANGE	CHANGE (%)
Daily	5,199,144	3,448,037	-1,751,107	-33.68%
Cumulative (1/5-23/5)	87,945,997	58,938,472	-29,007,525	-32.98%
Cumulative (2/1-23/5)	733,461,058	440,862,888	-292,598,170	-39.89%

### NO. OF SHARES TRADED

	2023	2024	NET CHANGE	CHANGE (%)
Daily	3,638,665	2,648,923	-989,742	-27.20%
Cumulative (1/5-23/5)	80,087,953	43,940,699	-36,147,254	-45.13%
Cumulative (2/1-23/5)	484,797,007	337,145,809	-147,651,198	-30.46%

### NO. OF TRANSACTIONS

	2023	2024	NET CHANGE	CHANGE (%)
Daily	3,006	2,383	-623	-20.73%
Cumulative (1/5-23/5)	49,749	37,269	-12,480	-25.09%
Cumulative (2/1-23/5)	307,249	230,692	-76,557	-24.92%

### SOME FINANCIAL RATIOS FOR THE ASE (23/5/2024)

SECTOR	P/E	P/BV	DIVIDEND YIELD (%)	TURNOVER (%)
FINANCIAL	8.724	0.756	5.950	0.029
SERVICES	12.018	1.296	5.982	0.101
INDUSTRY	7.990	1.391	8.209	0.025
OVERALL	8.307	0.958	7.081	0.043

### STOCK PRICE INDEX WEIGHTED BY FREE FLOAT MARKET CAPITALIZATION (1999=1000)

	WEDNESDAY 22/05/2024	THURSDAY 23/05/2024	% CHANGE	
			DAY BEFORE	YTD
GENERAL	2415.1	2412.4	-0.11%	-0.77%
FINANCIAL	2646.1	2644.5	-0.06%	-3.10%
SERVICES	1681.1	1681.9	0.05%	2.30%
INDUSTRY	4819.9	4803.2	-0.35%	1.79%

### STOCK PRICE INDEX WEIGHTED BY FREE FLOAT MARKET CAPITALIZATION ASE20 (2014=1000)

	1301.3	1299.4	-0.15%	-0.72%
--	--------	--------	--------	--------

### Total Return Index ASETR (2021=1074)

	1589.4	1587.0	-0.15%	6.62%
--	--------	--------	--------	-------

### STOCK PRICE INDEX WEIGHTED BY MARKET CAPITALIZATION (1991=1000)

	WEDNESDAY 22/05/2024	THURSDAY 23/05/2024	% CHANGE	
			DAY BEFORE	YTD
GENERAL	4368.5	4366.6	-0.04%	-1.13%
BANKS	6490.0	6497.7	0.12%	-3.53%
INSURANCE	1361.1	1361.8	0.05%	5.98%
SERVICES	880.5	883.6	0.35%	0.56%
INDUSTRY	5821.9	5799.4	-0.39%	1.63%

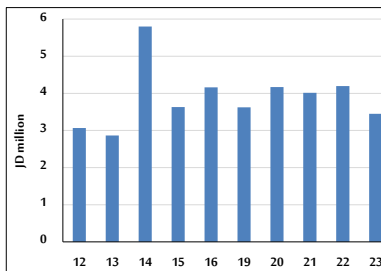
### STOCK PRICE MARKET INDEX WEIGHTED BY FREE FLOAT MARKET CAP. (2012=1000)

	WEDNESDAY 22/05/2024	THURSDAY 23/05/2024	% CHANGE	
			DAY BEFORE	YTD
FIRST MARKET	1349.7	1347.9	-0.13%	-0.82%
SECOND MARKET	844.6	846.6	0.24%	-2.04%

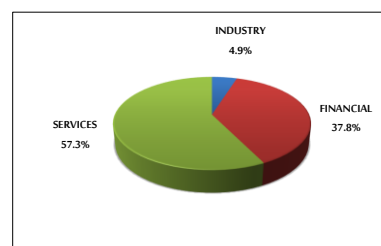
### MARKET CAPITALIZATION (JD)

	16,643,680,301	16,638,998,567	-0.03%	-1.77%
--	----------------	----------------	--------	--------

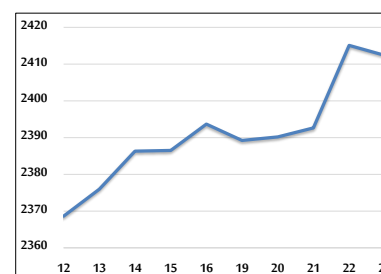
### VALUE TRADED FROM 12/5 TO 23/5/2024



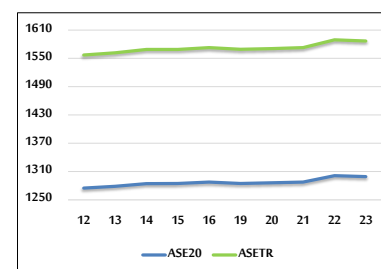
### VALUE TRADED BY SECTOR THURSDAY 23/5/2024



### GENERAL FREE FLOAT PRICE INDEX FROM 12/5 TO 23/5/2024



### ASE20 and ASETR FREE FLOAT PRICE INDEX FROM 12/5 TO 23/5/2024



### STOCK PRICE INDEX FROM 12/5 TO 23/5/2024

