

Daily Summary for Amman Stock Exchange

VALUE TRADED (JD)

	2023	2024	NET CHANGE	CHANGE (%)
Daily	4,578,134	2,081,097	-2,497,037	-54.54%
Cumulative (1/5-9/5)	31,184,564	19,965,195	-11,219,369	-35.98%
Cumulative (2/1-9/5)	676,699,625	401,889,611	-274,810,014	-40.61%

NO. OF SHARES TRADED

	2023	2024	NET CHANGE	CHANGE (%)
Daily	5,098,978	1,942,927	-3,156,051	-61.90%
Cumulative (1/5-9/5)	26,931,603	12,895,274	-14,036,329	-52.12%
Cumulative (2/1-9/5)	431,640,657	306,100,384	-125,540,273	-29.08%

NO. OF TRANSACTIONS

	2023	2024	NET CHANGE	CHANGE (%)
Daily	3,030	2,104	-926	-30.56%
Cumulative (1/5-9/5)	18,178	12,232	-5,946	-32.71%
Cumulative (2/1-9/5)	275,678	205,655	-70,023	-25.40%

SOME FINANCIAL RATIOS FOR THE ASE (9/5/2024)

SECTOR	P/E	P/BV	DIVIDEND YIELD (%)	TURNOVER (%)
FINANCIAL	8.596	0.746	6.025	0.028
SERVICES	11.657	1.257	6.168	0.040
INDUSTRY	7.691	1.339	8.526	0.038
OVERALL	8.090	0.933	7.271	0.032

STOCK PRICE INDEX WEIGHTED BY FREE FLOAT MARKET CAPITALIZATION (1999=1000)

	WEDNESDAY 08/05/2024	THURSDAY 09/05/2024	% CHANGE	
			DAY BEFORE	YTD
GENERAL	2357.0	2363.6	0.28%	-2.78%
FINANCIAL	2610.6	2614.7	0.16%	-4.19%
SERVICES	1623.7	1625.1	0.09%	-1.15%
INDUSTRY	4648.7	4689.1	0.87%	-0.63%

STOCK PRICE INDEX WEIGHTED BY FREE FLOAT MARKET CAPITALIZATION ASE20 (2014=1000)

	1268.1	1273.2	0.41%	-2.72%
--	--------	--------	-------	--------

Total Return Index ASETR (2021=1074)

	1548.8	1555.1	0.41%	4.48%
--	--------	--------	-------	-------

STOCK PRICE INDEX WEIGHTED BY MARKET CAPITALIZATION (1991=1000)

	WEDNESDAY 08/05/2024	THURSDAY 09/05/2024	% CHANGE	
			DAY BEFORE	YTD
GENERAL	4235.7	4252.7	0.40%	-3.70%
BANKS	6407.7	6415.5	0.12%	-4.75%
INSURANCE	1337.3	1336.0	-0.10%	3.98%
SERVICES	855.6	854.3	-0.15%	-2.77%
INDUSTRY	5501.4	5555.2	0.98%	-2.65%

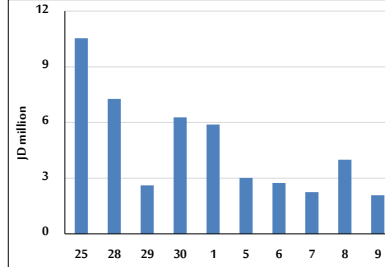
STOCK PRICE MARKET INDEX WEIGHTED BY FREE FLOAT MARKET CAP. (2012=1000)

	WEDNESDAY 08/05/2024	THURSDAY 09/05/2024	% CHANGE	
			DAY BEFORE	YTD
FIRST MARKET	1317.3	1321.8	0.34%	-2.74%
SECOND MARKET	822.7	817.2	-0.66%	-5.44%

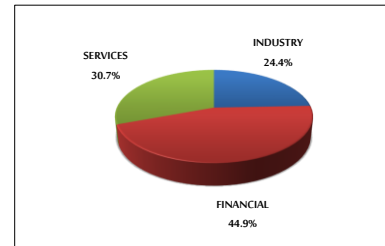
MARKET CAPITALIZATION (JD)

	16,189,120,716	16,247,147,363	0.36%	-4.09%
--	----------------	----------------	-------	--------

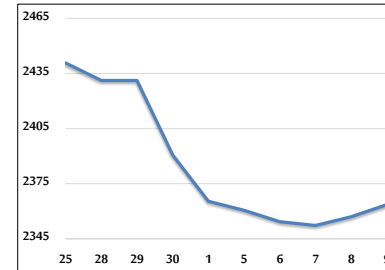
VALUE TRADED FROM 25/4 TO 9/5/2024



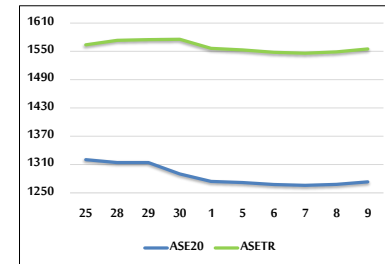
VALUE TRADED BY SECTOR THURSDAY 9/5/2024



GENERAL FREE FLOAT PRICE INDEX FROM 25/4 TO 9/5/2024



ASE20 and ASETR FREE FLOAT PRICE INDEX FROM 25/4 TO 9/5/2024



STOCK PRICE INDEX FROM 25/4 TO 9/5/2024

