

Daily Summary for Amman Stock Exchange

VALUE TRADED (JD)

	2023	2024	NET CHANGE	CHANGE (%)
Daily	4,486,983	4,584,213	97,230	2.17%
Cumulative (2/6-13/6)	50,912,383	40,294,977	-10,617,406	-20.85%
Cumulative (2/1-13/6)	812,200,185	597,071,495	-215,128,690	-26.49%

NO. OF SHARES TRADED

	2023	2024	NET CHANGE	CHANGE (%)
Daily	6,042,790	3,146,563	-2,896,227	-47.93%
Cumulative (2/6-13/6)	40,954,094	27,965,814	-12,988,280	-31.71%
Cumulative (2/1-13/6)	549,307,111	404,502,373	-144,804,738	-26.36%

NO. OF TRANSACTIONS

	2023	2024	NET CHANGE	CHANGE (%)
Daily	2,865	2,307	-558	-19.48%
Cumulative (2/6-13/6)	28,767	22,440	-6,327	-21.99%
Cumulative (2/1-13/6)	353,076	265,000	-88,076	-24.95%

SOME FINANCIAL RATIOS FOR THE ASE (13/6/2024)

SECTOR	P/E	P/BV	DIVIDEND YIELD (%)	TURNOVER (%)
FINANCIAL	8.659	0.751	5.966	0.046
SERVICES	12.199	1.316	5.893	0.076
INDUSTRY	8.057	1.403	8.142	0.039
OVERALL	8.325	0.960	7.068	0.051

STOCK PRICE INDEX WEIGHTED BY FREE FLOAT MARKET CAPITALIZATION (1999=1000)

	WEDNESDAY 12/06/2024	THURSDAY 13/06/2024	% CHANGE	
			DAY BEFORE	YTD
GENERAL	2414.2	2420.5	0.26%	-0.44%
FINANCIAL	2627.0	2632.5	0.21%	-3.53%
SERVICES	1697.9	1703.9	0.35%	3.64%
INDUSTRY	4832.3	4830.8	-0.03%	2.38%

STOCK PRICE INDEX WEIGHTED BY FREE FLOAT MARKET CAPITALIZATION ASE20 (2014=1000)

	1301.3	1305.4	0.32%	-0.26%
--	--------	--------	-------	--------

Total Return Index ASETR (2021=1074)

	1589.3	1594.3	0.31%	7.11%
--	--------	--------	-------	-------

STOCK PRICE INDEX WEIGHTED BY MARKET CAPITALIZATION (1991=1000)

	WEDNESDAY 12/06/2024	THURSDAY 13/06/2024	% CHANGE	
			DAY BEFORE	YTD
GENERAL	4364.6	4375.9	0.26%	-0.91%
BANKS	6432.5	6452.0	0.30%	-4.21%
INSURANCE	1361.1	1353.6	-0.55%	5.35%
SERVICES	900.7	905.4	0.51%	3.04%
INDUSTRY	5833.0	5840.0	0.12%	2.34%

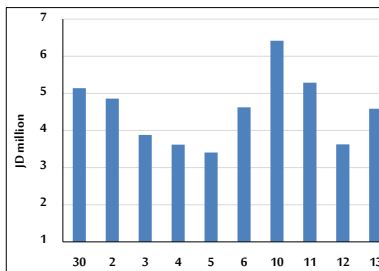
STOCK PRICE MARKET INDEX WEIGHTED BY FREE FLOAT MARKET CAP. (2012=1000)

	WEDNESDAY 12/06/2024	THURSDAY 13/06/2024	% CHANGE	
			DAY BEFORE	YTD
FIRST MARKET	1351.1	1354.6	0.26%	-0.32%
SECOND MARKET	832.9	831.6	-0.15%	-3.78%

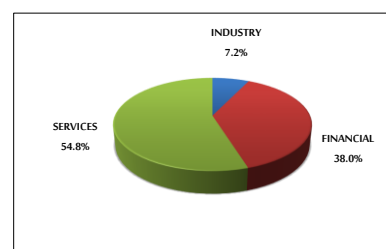
MARKET CAPITALIZATION (JD)

	16,627,544,379	16,663,973,229	0.22%	-1.62%
--	----------------	----------------	-------	--------

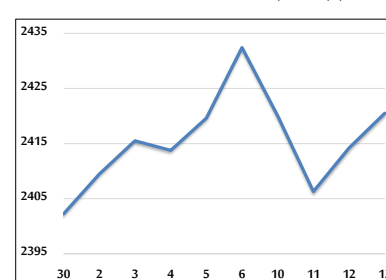
VALUE TRADED FROM 30/5 TO 13/6/2024



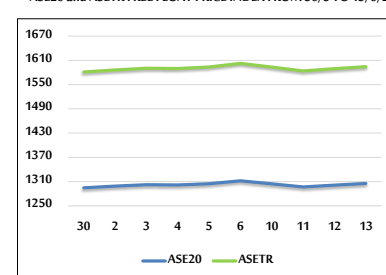
VALUE TRADED BY SECTOR THURSDAY 13/6/2024



GENERAL FREE FLOAT PRICE INDEX FROM 30/5 TO 13/6/2024



ASE20 and ASETR FREE FLOAT PRICE INDEX FROM 30/5 TO 13/6/2024



STOCK PRICE INDEX FROM 30/5 TO 13/6/2024

