

Daily Summary for Amman Stock Exchange

VALUE TRADED (JD)

	2023	2024	NET CHANGE	CHANGE (%)
Daily	6,935,726	3,663,689	-3,272,037	-47.18%
Cumulative (1/7-17/7)	63,948,923	46,361,418	-17,587,505	-27.50%
Cumulative (2/1-17/7)	927,269,642	668,582,965	-258,686,677	-27.90%

NO. OF SHARES TRADED

	2023	2024	NET CHANGE	CHANGE (%)
Daily	3,410,663	4,756,924	1,346,261	39.47%
Cumulative (1/7-17/7)	41,214,963	46,564,405	5,349,442	12.98%
Cumulative (2/1-17/7)	634,726,045	474,872,230	-159,853,815	-25.18%

NO. OF TRANSACTIONS

	2023	2024	NET CHANGE	CHANGE (%)
Daily	2,945	2,622	-323	-10.97%
Cumulative (1/7-17/7)	30,684	28,247	-2,437	-7.94%
Cumulative (2/1-17/7)	406,599	305,506	-101,093	-24.86%

SOME FINANCIAL RATIOS FOR THE ASE (17/7/2024)

SECTOR	P/E	P/BV	DIVIDEND YIELD (%)	TURNOVER (%)
FINANCIAL	8.621	0.743	6.036	0.053
SERVICES	12.230	1.319	5.878	0.160
INDUSTRY	8.242	1.435	7.959	0.069
OVERALL	8.359	0.965	7.032	0.077

STOCK PRICE INDEX WEIGHTED BY FREE FLOAT MARKET CAPITALIZATION (1999=1000)

	TUESDAY 16/07/2024	WEDNESDAY 17/07/2024	% CHANGE	
			DAY BEFORE	YTD
GENERAL	2423.7	2422.8	-0.04%	-0.35%
FINANCIAL	2610.5	2616.3	0.22%	-4.13%
SERVICES	1733.3	1720.0	-0.77%	4.62%
INDUSTRY	4886.1	4894.2	0.17%	3.72%

STOCK PRICE INDEX WEIGHTED BY FREE FLOAT MARKET CAPITALIZATION ASE20 (2014=1000)

	1306.9	1306.3	-0.04%	-0.19%
--	--------	--------	--------	--------

Total Return Index ASETR (2021=1074)

	1596.2	1595.5	-0.04%	7.19%
--	--------	--------	--------	-------

STOCK PRICE INDEX WEIGHTED BY MARKET CAPITALIZATION (1991=1000)

	TUESDAY 16/07/2024	WEDNESDAY 17/07/2024	% CHANGE	
			DAY BEFORE	YTD
GENERAL	4389.4	4391.8	0.06%	-0.55%
BANKS	6382.9	6391.1	0.13%	-5.12%
INSURANCE	1356.5	1357.9	0.10%	5.68%
SERVICES	904.0	899.8	-0.47%	2.41%
INDUSTRY	5975.2	5983.0	0.13%	4.84%

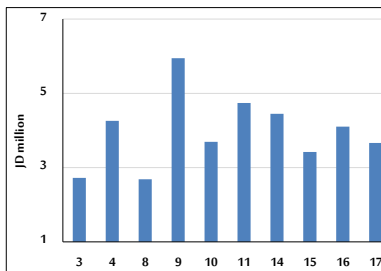
STOCK PRICE MARKET INDEX WEIGHTED BY FREE FLOAT MARKET CAP. (2012=1000)

	TUESDAY 16/07/2024	WEDNESDAY 17/07/2024	% CHANGE	
			DAY BEFORE	YTD
FIRST MARKET	1356.9	1355.8	-0.09%	-0.23%
SECOND MARKET	832.5	836.9	0.53%	-3.16%

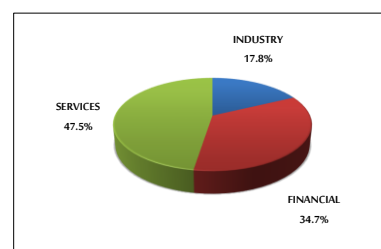
MARKET CAPITALIZATION (JD)

	16,711,907,524	16,719,555,022	0.05%	-1.30%
--	----------------	----------------	-------	--------

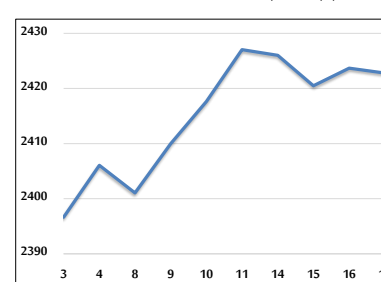
VALUE TRADED FROM 3/7 TO 17/7/2024



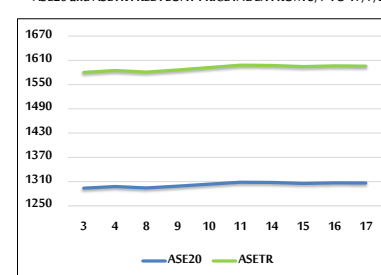
VALUE TRADED BY SECTOR WEDNESDAY 17/7/2024



GENERAL FREE FLOAT PRICE INDEX FROM 3/7 TO 17/7/2024



ASE20 and ASETR FREE FLOAT PRICE INDEX FROM 3/7 TO 17/7/2024



STOCK PRICE INDEX FROM 3/7 TO 17/7/2024

