

Daily Summary for Amman Stock Exchange

VALUE TRADED (JD)

	2023	2024	NET CHANGE	CHANGE (%)
Daily	11,451,366	3,395,344	-8,056,022	-70.35%
Cumulative (1/7-22/7)	87,147,174	59,390,593	-27,756,581	-31.85%
Cumulative (2/1-22/7)	950,467,893	681,612,140	-268,855,753	-28.29%

NO. OF SHARES TRADED

	2023	2024	NET CHANGE	CHANGE (%)
Daily	5,388,061	2,735,160	-2,652,901	-49.24%
Cumulative (1/7-22/7)	54,809,335	57,023,193	2,213,858	4.04%
Cumulative (2/1-22/7)	648,320,417	485,331,018	-162,989,399	-25.14%

NO. OF TRANSACTIONS

	2023	2024	NET CHANGE	CHANGE (%)
Daily	2,446	1,987	-459	-18.77%
Cumulative (1/7-22/7)	39,016	35,367	-3,649	-9.35%
Cumulative (2/1-22/7)	414,931	312,626	-102,305	-24.66%

SOME FINANCIAL RATIOS FOR THE ASE (22/7/2024)

SECTOR	P/E	P/BV	DIVIDEND YIELD (%)	TURNOVER (%)
FINANCIAL	8.598	0.741	6.052	0.035
SERVICES	12.100	1.305	5.941	0.046
INDUSTRY	8.100	1.410	8.098	0.093
OVERALL	8.281	0.956	7.098	0.044

STOCK PRICE INDEX WEIGHTED BY FREE FLOAT MARKET CAPITALIZATION (1999=1000)

	SUNDAY 21/07/2024	MONDAY 22/07/2024	% CHANGE	
			DAY BEFORE	YTD
GENERAL	2409.8	2401.8	-0.33%	-1.21%
FINANCIAL	2606.2	2604.1	-0.08%	-4.58%
SERVICES	1708.2	1697.5	-0.63%	3.25%
INDUSTRY	4855.9	4833.9	-0.45%	2.44%

STOCK PRICE INDEX WEIGHTED BY FREE FLOAT MARKET CAPITALIZATION ASE20 (2014=1000)

	1298.1	1293.3	-0.37%	-1.19%
--	--------	--------	--------	--------

Total Return Index ASETR (2021=1074)

	1585.5	1579.6	-0.37%	6.12%
--	--------	--------	--------	-------

STOCK PRICE INDEX WEIGHTED BY MARKET CAPITALIZATION (1991=1000)

	SUNDAY 21/07/2024	MONDAY 22/07/2024	% CHANGE	
			DAY BEFORE	YTD
GENERAL	4364.0	4350.8	-0.30%	-1.48%
BANKS	6380.2	6375.2	-0.08%	-5.35%
INSURANCE	1341.0	1341.0	0.00%	4.37%
SERVICES	893.7	895.7	0.23%	1.94%
INDUSTRY	5910.5	5865.0	-0.77%	2.77%

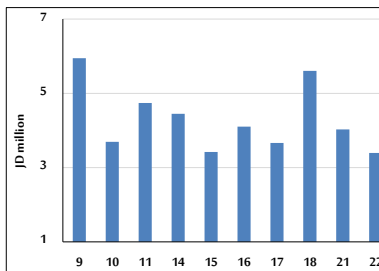
STOCK PRICE MARKET INDEX WEIGHTED BY FREE FLOAT MARKET CAP. (2012=1000)

	SUNDAY 21/07/2024	MONDAY 22/07/2024	% CHANGE	
			DAY BEFORE	YTD
FIRST MARKET	1348.7	1344.0	-0.35%	-1.10%
SECOND MARKET	833.7	832.1	-0.19%	-3.72%

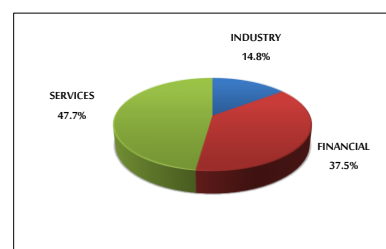
MARKET CAPITALIZATION (JD)

	16,616,976,415	16,572,216,307	-0.27%	-2.17%
--	----------------	----------------	--------	--------

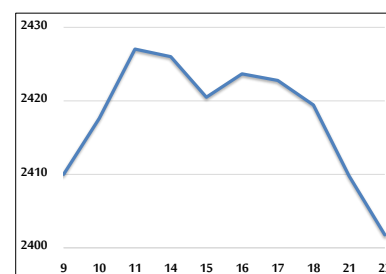
VALUE TRADED FROM 9/7 TO 22/7/2024



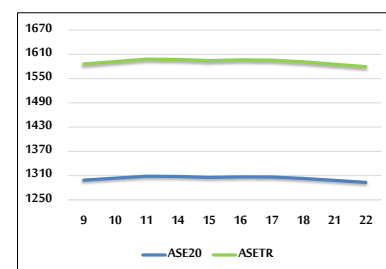
VALUE TRADED BY SECTOR MONDAY 22/7/2024



GENERAL FREE FLOAT PRICE INDEX FROM 9/7 TO 22/7/2024



ASE20 and ASETR FREE FLOAT PRICE INDEX FROM 9/7 TO 22/7/2024



STOCK PRICE INDEX FROM 9/7 TO 22/7/2024

