

Daily Summary for Amman Stock Exchange

VALUE TRADED (JD)

	2023	2024	NET CHANGE	CHANGE (%)
Daily	4,470,838	3,720,420	-750,418	-16.78%
Cumulative (1/7-23/7)	91,618,012	63,111,013	-28,506,999	-31.12%
Cumulative (2/1-23/7)	954,938,731	685,332,560	-269,606,171	-28.23%

NO. OF SHARES TRADED

	2023	2024	NET CHANGE	CHANGE (%)
Daily	3,851,293	3,123,336	-727,957	-18.90%
Cumulative (1/7-23/7)	58,660,628	60,146,529	1,485,901	2.53%
Cumulative (2/1-23/7)	652,171,710	488,454,354	-163,717,356	-25.10%

NO. OF TRANSACTIONS

	2023	2024	NET CHANGE	CHANGE (%)
Daily	2,661	2,630	-31	-1.16%
Cumulative (1/7-23/7)	41,677	37,997	-3,680	-8.83%
Cumulative (2/1-23/7)	417,592	315,256	-102,336	-24.51%

SOME FINANCIAL RATIOS FOR THE ASE (23/7/2024)

SECTOR	P/E	P/BV	DIVIDEND YIELD (%)	TURNOVER (%)
FINANCIAL	8.620	0.743	6.036	0.031
SERVICES	12.046	1.299	5.968	0.105
INDUSTRY	8.115	1.413	8.083	0.070
OVERALL	8.292	0.958	7.089	0.051

STOCK PRICE INDEX WEIGHTED BY FREE FLOAT MARKET CAPITALIZATION (1999=1000)

	MONDAY 22/07/2024	TUESDAY 23/07/2024	% CHANGE	
			DAY BEFORE	YTD
GENERAL	2401.8	2405.6	0.16%	-1.05%
FINANCIAL	2604.1	2613.8	0.37%	-4.22%
SERVICES	1697.5	1689.6	-0.47%	2.77%
INDUSTRY	4833.9	4848.3	0.30%	2.75%

STOCK PRICE INDEX WEIGHTED BY FREE FLOAT MARKET CAPITALIZATION ASE20 (2014=1000)

	1293.3	1296.1	0.22%	-0.97%
--	--------	--------	-------	--------

Total Return Index ASETR (2021=1074)

	1579.6	1583.1	0.22%	6.36%
--	--------	--------	-------	-------

STOCK PRICE INDEX WEIGHTED BY MARKET CAPITALIZATION (1991=1000)

	MONDAY 22/07/2024	TUESDAY 23/07/2024	% CHANGE	
			DAY BEFORE	YTD
GENERAL	4350.8	4356.6	0.13%	-1.35%
BANKS	6375.2	6393.5	0.29%	-5.08%
INSURANCE	1341.0	1339.2	-0.14%	4.22%
SERVICES	895.7	890.7	-0.56%	1.38%
INDUSTRY	5865.0	5874.5	0.16%	2.94%

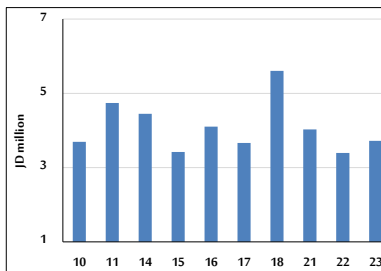
STOCK PRICE MARKET INDEX WEIGHTED BY FREE FLOAT MARKET CAP. (2012=1000)

	MONDAY 22/07/2024	TUESDAY 23/07/2024	% CHANGE	
			DAY BEFORE	YTD
FIRST MARKET	1344.0	1346.2	0.16%	-0.94%
SECOND MARKET	832.1	833.8	0.21%	-3.52%

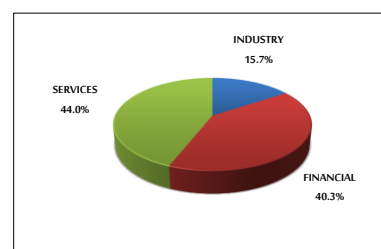
MARKET CAPITALIZATION (JD)

	16,572,216,307	16,591,881,600	0.12%	-2.05%
--	----------------	----------------	-------	--------

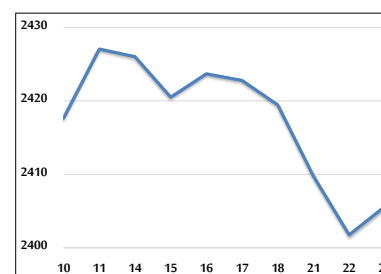
VALUE TRADED FROM 10/7 TO 23/7/2024



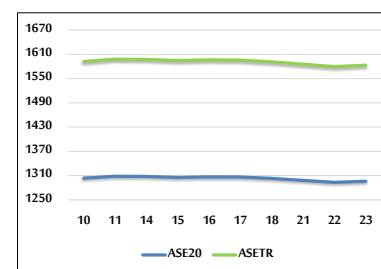
VALUE TRADED BY SECTOR TUESDAY 23/7/2024



GENERAL FREE FLOAT PRICE INDEX FROM 10/7 TO 23/7/2024



ASE20 and ASETR FREE FLOAT PRICE INDEX FROM 10/7 TO 23/7/2024



STOCK PRICE INDEX FROM 10/7 TO 23/7/2024

