

Daily Summary for Amman Stock Exchange

VALUE TRADED (JD)

	2023	2024	NET CHANGE	CHANGE (%)
Daily	7,311,179	2,991,682	-4,319,497	-59.08%
Cumulative (1/8-7/8)	23,338,177	23,649,384	311,207	1.33%
Cumulative (2/1-7/8)	1,009,218,764	738,426,770	-270,791,994	-26.83%

NO. OF SHARES TRADED

	2023	2024	NET CHANGE	CHANGE (%)
Daily	5,713,781	2,114,807	-3,598,974	-62.99%
Cumulative (1/8-7/8)	17,052,084	16,173,947	-878,137	-5.15%
Cumulative (2/1-7/8)	687,253,003	526,651,676	-160,601,327	-23.37%

NO. OF TRANSACTIONS

	2023	2024	NET CHANGE	CHANGE (%)
Daily	2,079	1,832	-247	-11.88%
Cumulative (1/8-7/8)	11,005	10,535	-470	-4.27%
Cumulative (2/1-7/8)	441,502	340,640	-100,862	-22.85%

SOME FINANCIAL RATIOS FOR THE ASE (7/8/2024)

SECTOR	P/E	P/BV	DIVIDEND YIELD (%)	TURNOVER (%)
FINANCIAL	8.693	0.740	6.043	0.032
SERVICES	12.263	1.271	6.104	0.028
INDUSTRY	8.293	1.374	8.210	0.055
OVERALL	8.344	0.945	7.178	0.034

STOCK PRICE INDEX WEIGHTED BY FREE FLOAT MARKET CAPITALIZATION (1999=1000)

	TUESDAY 06/08/2024	WEDNESDAY 07/08/2024	% CHANGE	
			DAY BEFORE	YTD
GENERAL	2368.3	2377.2	0.37%	-2.22%
FINANCIAL	2591.4	2598.3	0.27%	-4.79%
SERVICES	1649.2	1653.7	0.27%	0.59%
INDUSTRY	4708.0	4746.7	0.82%	0.59%

STOCK PRICE INDEX WEIGHTED BY FREE FLOAT MARKET CAPITALIZATION ASE20 (2014=1000)

	1275.4	1280.3	0.38%	-2.18%
--	--------	--------	-------	--------

Total Return Index ASETR (2021=1074)

	1557.8	1563.7	0.38%	5.05%
--	--------	--------	-------	-------

STOCK PRICE INDEX WEIGHTED BY MARKET CAPITALIZATION (1991=1000)

	TUESDAY 06/08/2024	WEDNESDAY 07/08/2024	% CHANGE	
			DAY BEFORE	YTD
GENERAL	4276.1	4298.0	0.51%	-2.68%
BANKS	6351.1	6374.6	0.37%	-5.36%
INSURANCE	1317.4	1321.3	0.30%	2.83%
SERVICES	871.4	874.9	0.41%	-0.42%
INDUSTRY	5681.1	5722.7	0.73%	0.28%

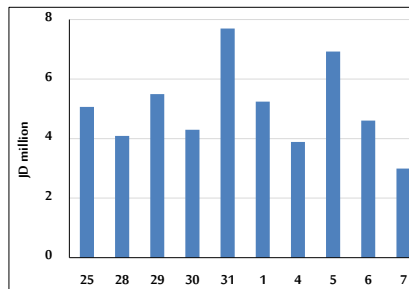
STOCK PRICE MARKET INDEX WEIGHTED BY FREE FLOAT MARKET CAP. (2012=1000)

	TUESDAY 06/08/2024	WEDNESDAY 07/08/2024	% CHANGE	
			DAY BEFORE	YTD
FIRST MARKET	1326.0	1331.3	0.40%	-2.04%
SECOND MARKET	814.6	814.9	0.03%	-5.71%

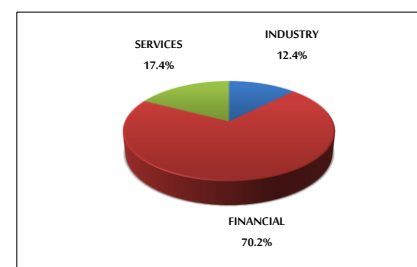
MARKET CAPITALIZATION (JD)

	16,341,671,215	16,420,901,103	0.48%	-3.06%
--	----------------	----------------	-------	--------

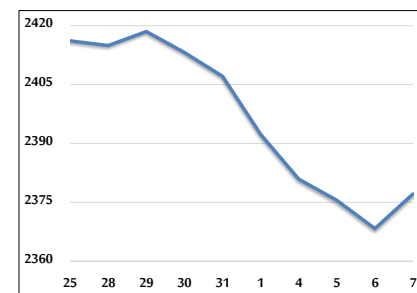
VALUE TRADED FROM 25/7 TO 7/8/2024



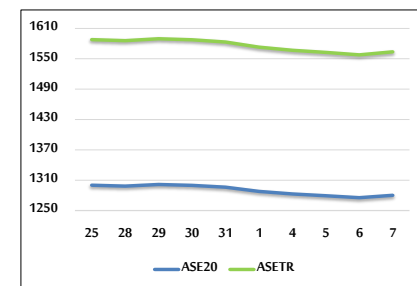
VALUE TRADED BY SECTOR WEDNESDAY 7/8/2024



GENERAL FREE FLOAT PRICE INDEX FROM 25/7 TO 7/8/2024



ASE20 and ASETR FREE FLOAT PRICE INDEX FROM 25/7 TO 7/8/2024



STOCK PRICE INDEX FROM 25/7 TO 7/8/2024

