

## Daily Summary for Amman Stock Exchange

### VALUE TRADED (JD)

	2023	2024	NET CHANGE	CHANGE (%)
Daily	3,615,208	3,940,749	325,541	9.00%
Cumulative (1/10-20/10)	67,806,157	53,602,841	-14,203,316	-20.95%
Cumulative (2/1-20/10)	1,242,356,832	931,348,653	-311,008,179	-25.03%

### NO. OF SHARES TRADED

	2023	2024	NET CHANGE	CHANGE (%)
Daily	3,653,393	2,981,215	-672,178	-18.40%
Cumulative (1/10-20/10)	72,010,572	42,755,735	-29,254,837	-40.63%
Cumulative (2/1-20/10)	910,995,349	690,565,704	-220,429,645	-24.20%

### NO. OF TRANSACTIONS

	2023	2024	NET CHANGE	CHANGE (%)
Daily	1,595	2,241	646	40.50%
Cumulative (1/10-20/10)	36,257	27,401	-8,856	-24.43%
Cumulative (2/1-20/10)	568,480	439,007	-129,473	-22.78%

### SOME FINANCIAL RATIOS FOR THE ASE (20/10/2024)

SECTOR	P/E	P/BV	DIVIDEND YIELD (%)	TURNOVER (%)
FINANCIAL	8.626	0.738	6.093	0.037
SERVICES	12.329	1.277	6.071	0.080
INDUSTRY	8.789	1.453	7.761	0.049
OVERALL	8.631	0.961	6.954	0.048

### STOCK PRICE INDEX WEIGHTED BY FREE FLOAT MARKET CAPITALIZATION (1999=1000)

	THURSDAY 17/10/2024	SUNDAY 20/10/2024	% CHANGE	
			DAY BEFORE	YTD
GENERAL	2393.8	2400.7	0.29%	-1.25%
FINANCIAL	2597.4	2599.5	0.08%	-4.75%
SERVICES	1672.0	1678.2	0.37%	2.08%
INDUSTRY	4880.7	4922.8	0.86%	4.32%

### STOCK PRICE INDEX WEIGHTED BY FREE FLOAT MARKET CAPITALIZATION ASE20 (2014=1000)

	1291.9	1296.3	0.34%	-0.95%
--	--------	--------	-------	--------

### Total Return Index ASETR (2021=1074)

	1577.9	1583.3	0.34%	6.37%
--	--------	--------	-------	-------

### STOCK PRICE INDEX WEIGHTED BY MARKET CAPITALIZATION (1991=1000)

	THURSDAY 17/10/2024	SUNDAY 20/10/2024	% CHANGE	
			DAY BEFORE	YTD
GENERAL	4364.0	4381.2	0.39%	-0.80%
BANKS	6354.6	6348.3	-0.10%	-5.75%
INSURANCE	1358.9	1356.3	-0.19%	5.55%
SERVICES	859.2	861.5	0.26%	-1.95%
INDUSTRY	6015.6	6080.3	1.08%	6.55%

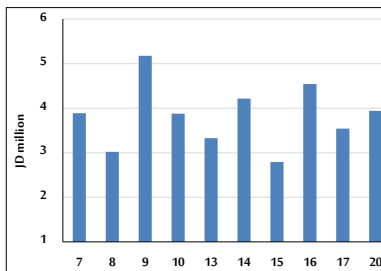
### STOCK PRICE MARKET INDEX WEIGHTED BY FREE FLOAT MARKET CAP. (2012=1000)

	THURSDAY 17/10/2024	SUNDAY 20/10/2024	% CHANGE	
			DAY BEFORE	YTD
FIRST MARKET	1341.9	1346.0	0.30%	-0.96%
SECOND MARKET	807.1	811.0	0.49%	-6.16%

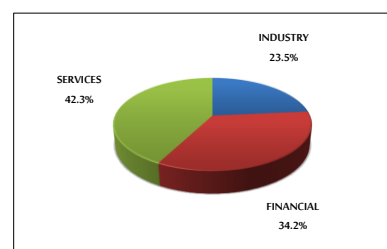
### MARKET CAPITALIZATION (JD)

	16,667,066,667	16,728,780,087	0.37%	-1.24%
--	----------------	----------------	-------	--------

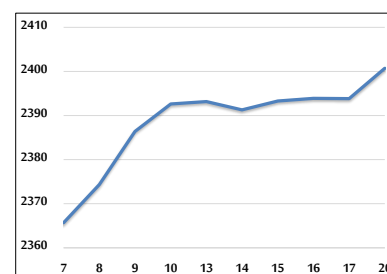
### VALUE TRADED FROM 7/10 TO 20/10/2024



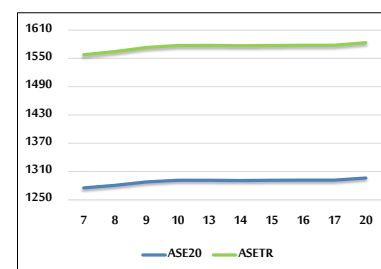
### VALUE TRADED BY SECTOR SUNDAY 20/10/2024



### GENERAL FREE FLOAT PRICE INDEX FROM 7/10 TO 20/10/2024



### ASE20 and ASETR FREE FLOAT PRICE INDEX FROM 7/10 TO 20/10/2024



### STOCK PRICE INDEX FROM 7/10 TO 20/10/2024

