

Daily Summary for Amman Stock Exchange

VALUE TRADED (JD)

	2023	2024	NET CHANGE	CHANGE (%)
Daily	3,097,881	3,228,994	131,113	4.23%
Cumulative (1/10-21/10)	70,904,038	56,831,835	-14,072,203	-19.85%
Cumulative (2/1-21/10)	1,245,454,713	934,577,647	-310,877,066	-24.96%

NO. OF SHARES TRADED

	2023	2024	NET CHANGE	CHANGE (%)
Daily	2,947,683	2,612,486	-335,197	-11.37%
Cumulative (1/10-21/10)	74,958,255	45,368,221	-29,590,034	-39.48%
Cumulative (2/1-21/10)	913,943,032	693,178,190	-220,764,842	-24.16%

NO. OF TRANSACTIONS

	2023	2024	NET CHANGE	CHANGE (%)
Daily	1,871	1,807	-64	-3.42%
Cumulative (1/10-21/10)	38,128	29,208	-8,920	-23.39%
Cumulative (2/1-21/10)	570,351	440,814	-129,537	-22.71%

SOME FINANCIAL RATIOS FOR THE ASE (21/10/2024)

SECTOR	P/E	P/BV	DIVIDEND YIELD (%)	TURNOVER (%)
FINANCIAL	8.637	0.739	6.085	0.024
SERVICES	12.303	1.275	6.084	0.105
INDUSTRY	8.869	1.466	7.691	0.034
OVERALL	8.663	0.964	6.928	0.042

STOCK PRICE INDEX WEIGHTED BY FREE FLOAT MARKET CAPITALIZATION (1999=1000)

	SUNDAY 20/10/2024	MONDAY 21/10/2024	% CHANGE	
			DAY BEFORE	YTD
GENERAL	2400.7	2403.8	0.13%	-1.13%
FINANCIAL	2599.5	2601.8	0.09%	-4.66%
SERVICES	1678.2	1672.7	-0.32%	1.75%
INDUSTRY	4922.8	4965.3	0.86%	5.23%

STOCK PRICE INDEX WEIGHTED BY FREE FLOAT MARKET CAPITALIZATION ASE20 (2014=1000)

	1296.3	1299.0	0.20%	-0.75%
--	--------	--------	-------	--------

Total Return Index ASETR (2021=1074)

	1583.3	1586.5	0.20%	6.59%
--	--------	--------	-------	-------

STOCK PRICE INDEX WEIGHTED BY MARKET CAPITALIZATION (1991=1000)

	SUNDAY 20/10/2024	MONDAY 21/10/2024	% CHANGE	
			DAY BEFORE	YTD
GENERAL	4381.2	4397.5	0.37%	-0.43%
BANKS	6348.3	6360.2	0.19%	-5.57%
INSURANCE	1356.3	1361.1	0.36%	5.93%
SERVICES	861.5	859.1	-0.27%	-2.22%
INDUSTRY	6080.3	6130.4	0.82%	7.42%

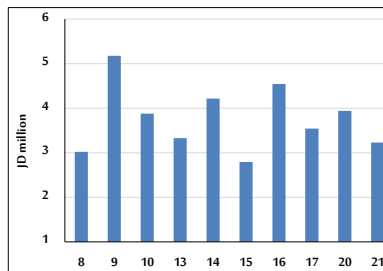
STOCK PRICE MARKET INDEX WEIGHTED BY FREE FLOAT MARKET CAP. (2012=1000)

	SUNDAY 20/10/2024	MONDAY 21/10/2024	% CHANGE	
			DAY BEFORE	YTD
FIRST MARKET	1346.0	1348.5	0.19%	-0.77%
SECOND MARKET	811.0	802.7	-1.03%	-7.13%

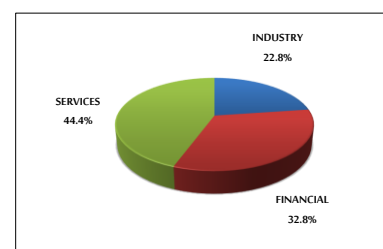
MARKET CAPITALIZATION (JD)

	16,728,780,087	16,787,060,454	0.35%	-0.90%
--	----------------	----------------	-------	--------

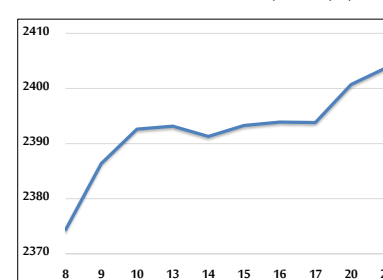
VALUE TRADED FROM 8/10 TO 21/10/2024



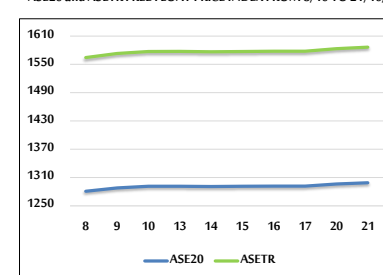
VALUE TRADED BY SECTOR MONDAY 21/10/2024



GENERAL FREE FLOAT PRICE INDEX FROM 8/10 TO 21/10/2024



ASE20 and ASETR FREE FLOAT PRICE INDEX FROM 8/10 TO 21/10/2024



STOCK PRICE INDEX FROM 8/10 TO 21/10/2024

