

Daily Summary for Amman Stock Exchange

VALUE TRADED (JD)

	2023	2024	NET CHANGE	CHANGE (%)
Daily	3,682,587	4,376,519	693,932	18.84%
Cumulative (1/10-23/10)	77,989,734	65,632,273	-12,357,461	-15.84%
Cumulative (2/1-23/10)	1,252,540,409	943,378,085	-309,162,324	-24.68%

NO. OF SHARES TRADED

	2023	2024	NET CHANGE	CHANGE (%)
Daily	2,297,392	2,516,678	219,286	9.54%
Cumulative (1/10-23/10)	79,519,918	51,182,289	-28,337,629	-35.64%
Cumulative (2/1-23/10)	918,504,695	698,992,258	-219,512,437	-23.90%

NO. OF TRANSACTIONS

	2023	2024	NET CHANGE	CHANGE (%)
Daily	1,878	2,073	195	10.38%
Cumulative (1/10-23/10)	41,444	33,280	-8,164	-19.70%
Cumulative (2/1-23/10)	573,667	444,886	-128,781	-22.45%

SOME FINANCIAL RATIOS FOR THE ASE (23/10/2024)

SECTOR	P/E	P/BV	DIVIDEND YIELD (%)	TURNOVER (%)
FINANCIAL	8.636	0.739	6.086	0.016
SERVICES	12.301	1.274	6.085	0.078
INDUSTRY	8.938	1.478	7.632	0.104
OVERALL	8.686	0.967	6.909	0.040

STOCK PRICE INDEX WEIGHTED BY FREE FLOAT MARKET CAPITALIZATION (1999=1000)

	TUESDAY 22/10/2024	WEDNESDAY 23/10/2024	% CHANGE	
			DAY BEFORE	YTD
GENERAL	2398.6	2404.4	0.24%	-1.10%
FINANCIAL	2596.2	2599.3	0.12%	-4.75%
SERVICES	1670.5	1670.7	0.01%	1.62%
INDUSTRY	4955.3	5004.9	1.00%	6.07%

STOCK PRICE INDEX WEIGHTED BY FREE FLOAT MARKET CAPITALIZATION ASE20 (2014=1000)

	1295.5	1298.5	0.23%	-0.79%
--	--------	--------	-------	--------

Total Return Index ASETR (2021=1074)

	1582.3	1585.9	0.23%	6.55%
--	--------	--------	-------	-------

STOCK PRICE INDEX WEIGHTED BY MARKET CAPITALIZATION (1991=1000)

	TUESDAY 22/10/2024	WEDNESDAY 23/10/2024	% CHANGE	
			DAY BEFORE	YTD
GENERAL	4387.2	4409.4	0.51%	-0.16%
BANKS	6344.3	6357.5	0.21%	-5.61%
INSURANCE	1362.1	1364.4	0.17%	6.18%
SERVICES	856.9	859.7	0.33%	-2.16%
INDUSTRY	6116.9	6175.3	0.95%	8.21%

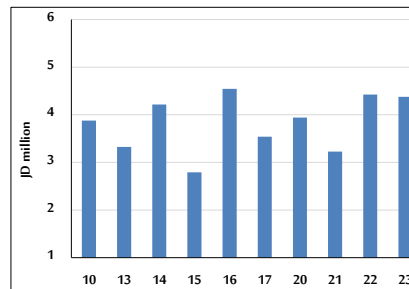
STOCK PRICE MARKET INDEX WEIGHTED BY FREE FLOAT MARKET CAP. (2012=1000)

	TUESDAY 22/10/2024	WEDNESDAY 23/10/2024	% CHANGE	
			DAY BEFORE	YTD
FIRST MARKET	1345.5	1348.4	0.22%	-0.78%
SECOND MARKET	803.9	806.4	0.31%	-6.69%

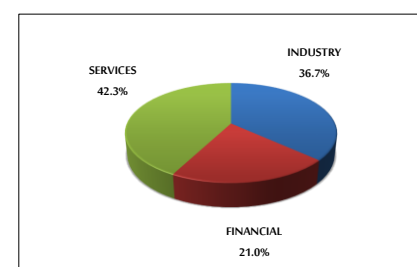
MARKET CAPITALIZATION (JD)

	16,750,629,056	16,830,978,300	0.48%	-0.64%
--	----------------	----------------	-------	--------

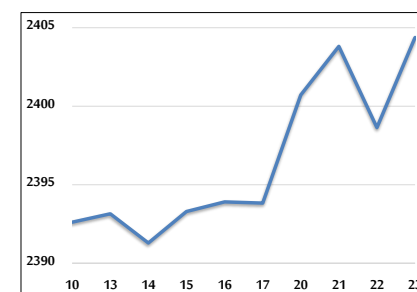
VALUE TRADED FROM 10/10 TO 23/10/2024



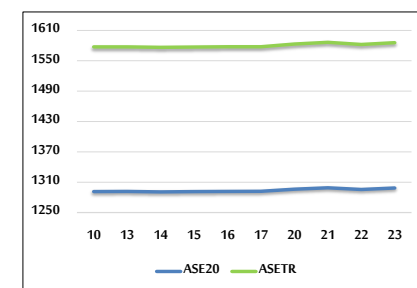
VALUE TRADED BY SECTOR WEDNESDAY 23/10/2024



GENERAL FREE FLOAT PRICE INDEX FROM 10/10 TO 23/10/2024



ASE20 and ASETR FREE FLOAT PRICE INDEX FROM 10/10 TO 23/10/2024



STOCK PRICE INDEX FROM 10/10 TO 23/10/2024

