

Daily Summary for Amman Stock Exchange

VALUE TRADED (JD)

	2023	2024	NET CHANGE	CHANGE (%)
Daily	3,152,443	6,387,714	3,235,271	102.63%
Cumulative (1/10-24/10)	81,142,177	72,019,987	-9,122,190	-11.24%
Cumulative (2/1-24/10)	1,255,692,852	949,765,799	-305,927,053	-24.36%

NO. OF SHARES TRADED

	2023	2024	NET CHANGE	CHANGE (%)
Daily	2,605,463	4,107,165	1,501,702	57.64%
Cumulative (1/10-24/10)	82,125,381	55,289,454	-26,835,927	-32.68%
Cumulative (2/1-24/10)	921,110,158	703,099,423	-218,010,735	-23.67%

NO. OF TRANSACTIONS

	2023	2024	NET CHANGE	CHANGE (%)
Daily	2,027	1,733	-294	-14.50%
Cumulative (1/10-24/10)	43,471	35,013	-8,458	-19.46%
Cumulative (2/1-24/10)	575,694	446,619	-129,075	-22.42%

SOME FINANCIAL RATIOS FOR THE ASE (24/10/2024)

SECTOR	P/E	P/BV	DIVIDEND YIELD (%)	TURNOVER (%)
FINANCIAL	8.638	0.739	6.085	0.063
SERVICES	12.258	1.270	6.107	0.096
INDUSTRY	8.961	1.481	7.612	0.036
OVERALL	8.692	0.967	6.905	0.066

STOCK PRICE INDEX WEIGHTED BY FREE FLOAT MARKET CAPITALIZATION (1999=1000)

	WEDNESDAY 23/10/2024	THURSDAY 24/10/2024	% CHANGE	
			DAY BEFORE	YTD
GENERAL	2404.4	2403.8	-0.03%	-1.13%
FINANCIAL	2599.3	2599.2	0.00%	-4.76%
SERVICES	1670.7	1664.7	-0.35%	1.26%
INDUSTRY	5004.9	5016.9	0.24%	6.32%

STOCK PRICE INDEX WEIGHTED BY FREE FLOAT MARKET CAPITALIZATION ASE20 (2014=1000)

	1298.5	1298.1	-0.03%	-0.82%
--	--------	--------	--------	--------

Total Return Index ASETR (2021=1074)

	1585.9	1585.5	-0.03%	6.52%
--	--------	--------	--------	-------

STOCK PRICE INDEX WEIGHTED BY MARKET CAPITALIZATION (1991=1000)

	WEDNESDAY 23/10/2024	THURSDAY 24/10/2024	% CHANGE	
			DAY BEFORE	YTD
GENERAL	4409.4	4412.1	0.06%	-0.10%
BANKS	6357.5	6361.3	0.06%	-5.56%
INSURANCE	1364.4	1363.6	-0.06%	6.12%
SERVICES	859.7	856.5	-0.37%	-2.52%
INDUSTRY	6175.3	6188.0	0.21%	8.44%

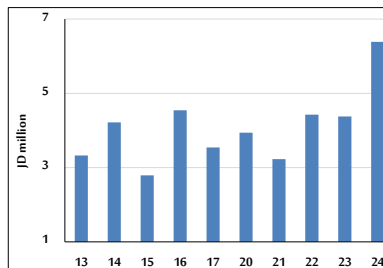
STOCK PRICE MARKET INDEX WEIGHTED BY FREE FLOAT MARKET CAP. (2012=1000)

	WEDNESDAY 23/10/2024	THURSDAY 24/10/2024	% CHANGE	
			DAY BEFORE	YTD
FIRST MARKET	1348.4	1348.2	-0.01%	-0.79%
SECOND MARKET	806.4	802.6	-0.47%	-7.13%

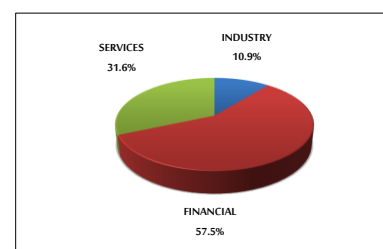
MARKET CAPITALIZATION (JD)

	16,830,978,300	16,838,863,874	0.05%	-0.59%
--	----------------	----------------	-------	--------

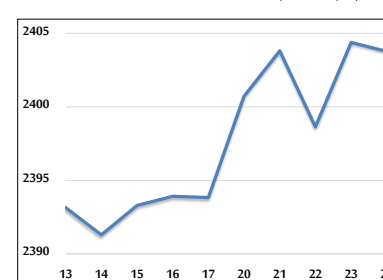
VALUE TRADED FROM 13/10 TO 24/10/2024



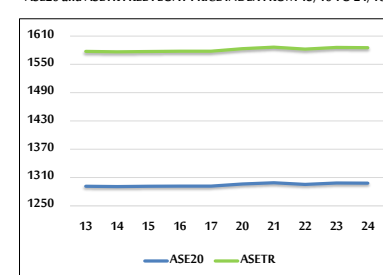
VALUE TRADED BY SECTOR THURSDAY 24/10/2024



GENERAL FREE FLOAT PRICE INDEX FROM 13/10 TO 24/10/2024



ASE20 and ASETR FREE FLOAT PRICE INDEX FROM 13/10 TO 24/10/2024



STOCK PRICE INDEX FROM 13/10 TO 24/10/2024

