

Daily Summary for Amman Stock Exchange

VALUE TRADED (JD)

	2023	2024	NET CHANGE	CHANGE (%)
Daily	3,295,720	3,390,879	95,159	2.89%
Cumulative (3/11-25/11)	57,599,419	79,417,951	21,818,532	37.88%
Cumulative (2/1-25/11)	1,335,375,248	1,049,747,632	-285,627,616	-21.39%

NO. OF SHARES TRADED

	2023	2024	NET CHANGE	CHANGE (%)
Daily	4,359,595	3,206,104	-1,153,491	-26.46%
Cumulative (3/11-25/11)	58,020,378	68,375,671	10,355,293	17.85%
Cumulative (2/1-25/11)	1,001,485,036	786,568,700	-214,916,336	-21.46%

NO. OF TRANSACTIONS

	2023	2024	NET CHANGE	CHANGE (%)
Daily	2,295	1,973	-322	-14.03%
Cumulative (3/11-25/11)	36,057	38,146	2,089	5.79%
Cumulative (2/1-25/11)	622,110	495,394	-126,716	-20.37%

SOME FINANCIAL RATIOS FOR THE ASE (25/11/2024)

SECTOR	P/E	P/BV	DIVIDEND YIELD (%)	TURNOVER (%)
FINANCIAL	7.993	0.744	6.020	0.049
SERVICES	12.618	1.257	6.169	0.068
INDUSTRY	9.306	1.545	7.300	0.039
OVERALL	8.494	0.985	6.784	0.052

STOCK PRICE INDEX WEIGHTED BY FREE FLOAT MARKET CAPITALIZATION (1999=1000)

	SUNDAY 24/11/2024	MONDAY 25/11/2024	% CHANGE	
			DAY BEFORE	YTD
GENERAL	2421.6	2421.4	-0.01%	-0.40%
FINANCIAL	2603.2	2602.6	-0.02%	-4.63%
SERVICES	1645.5	1648.8	0.20%	0.29%
INDUSTRY	5275.9	5269.2	-0.13%	11.67%

STOCK PRICE INDEX WEIGHTED BY FREE FLOAT MARKET CAPITALIZATION ASE20 (2014=1000)

	1304.2	1303.9	-0.02%	-0.38%
--	--------	--------	--------	--------

Total Return Index ASETR (2021=1074)

	1592.9	1592.5	-0.02%	6.99%
--	--------	--------	--------	-------

STOCK PRICE INDEX WEIGHTED BY MARKET CAPITALIZATION (1991=1000)

	SUNDAY 24/11/2024	MONDAY 25/11/2024	% CHANGE	
			DAY BEFORE	YTD
GENERAL	4486.5	4480.9	-0.12%	1.46%
BANKS	6374.3	6375.8	0.02%	-5.34%
INSURANCE	1387.4	1389.3	0.14%	8.12%
SERVICES	853.5	852.2	-0.15%	-3.01%
INDUSTRY	6444.0	6425.2	-0.29%	12.59%

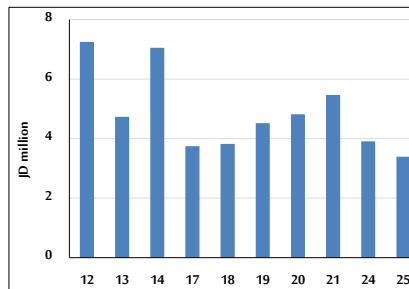
STOCK PRICE MARKET INDEX WEIGHTED BY FREE FLOAT MARKET CAP. (2012=1000)

	SUNDAY 24/11/2024	MONDAY 25/11/2024	% CHANGE	
			DAY BEFORE	YTD
FIRST MARKET	1355.8	1356.5	0.05%	-0.18%
SECOND MARKET	835.9	830.6	-0.63%	-3.89%

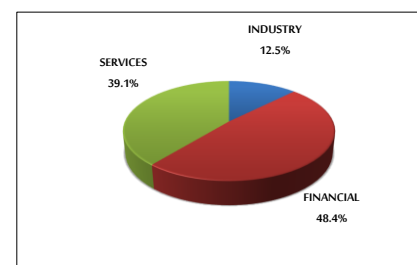
MARKET CAPITALIZATION (JD)

	17,137,809,600	17,120,441,114	-0.10%	1.07%
--	----------------	----------------	--------	-------

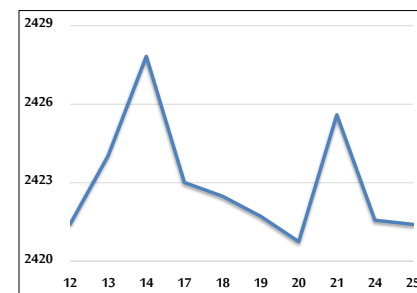
VALUE TRADED FROM 12/11 TO 25/11/2024



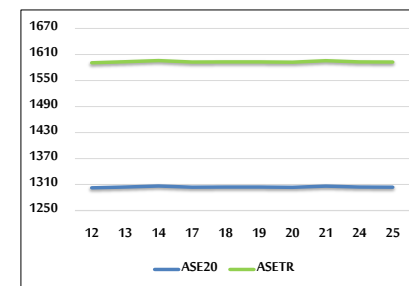
VALUE TRADED BY SECTOR MONDAY 25/11/2024



GENERAL FREE FLOAT PRICE INDEX FROM 12/11 TO 25/11/2024



ASE20 and ASETR FREE FLOAT PRICE INDEX FROM 12/11 TO 25/11/2024



STOCK PRICE INDEX FROM 12/11 TO 25/11/2024

