

## Daily Summary for Amman Stock Exchange

### VALUE TRADED (JD)

	2023	2024	NET CHANGE	CHANGE (%)
Daily	4,086,416	5,293,812	1,207,396	29.55%
Cumulative (3/11-28/11)	79,786,556	96,000,788	16,214,232	20.32%
Cumulative (2/1-28/11)	1,357,562,385	1,066,330,469	-291,231,916	-21.45%

### NO. OF SHARES TRADED

	2023	2024	NET CHANGE	CHANGE (%)
Daily	3,419,008	3,844,300	425,292	12.44%
Cumulative (3/11-28/11)	83,735,592	80,904,319	-2,831,273	-3.38%
Cumulative (2/1-28/11)	1,027,200,250	799,097,348	-228,102,902	-22.21%

### NO. OF TRANSACTIONS

	2023	2024	NET CHANGE	CHANGE (%)
Daily	2,496	2,288	-208	-8.33%
Cumulative (3/11-28/11)	48,034	44,784	-3,250	-6.77%
Cumulative (2/1-28/11)	634,087	502,032	-132,055	-20.83%

### SOME FINANCIAL RATIOS FOR THE ASE (28/11/2024)

SECTOR	P/E	P/BV	DIVIDEND YIELD (%)	TURNOVER (%)
FINANCIAL	8.001	0.744	6.017	0.054
SERVICES	12.651	1.260	6.153	0.085
INDUSTRY	9.267	1.538	7.331	0.068
OVERALL	8.481	0.983	6.794	0.062

### STOCK PRICE INDEX WEIGHTED BY FREE FLOAT MARKET CAPITALIZATION (1999=1000)

	WEDNESDAY 27/11/2024	THURSDAY 28/11/2024	% CHANGE	
			DAY BEFORE	YTD
GENERAL	2420.8	2420.1	-0.03%	-0.46%
FINANCIAL	2597.6	2596.8	-0.03%	-4.84%
SERVICES	1655.7	1656.0	0.02%	0.73%
INDUSTRY	5268.8	5264.3	-0.08%	11.56%

### STOCK PRICE INDEX WEIGHTED BY FREE FLOAT MARKET CAPITALIZATION ASE20 (2014=1000)

	1303.0	1301.9	-0.08%	-0.53%
--	--------	--------	--------	--------

### Total Return Index ASETR (2021=1074)

	1591.4	1590.1	-0.08%	6.83%
--	--------	--------	--------	-------

### STOCK PRICE INDEX WEIGHTED BY MARKET CAPITALIZATION (1991=1000)

	WEDNESDAY 27/11/2024	THURSDAY 28/11/2024	% CHANGE	
			DAY BEFORE	YTD
GENERAL	4478.2	4474.1	-0.09%	1.31%
BANKS	6377.8	6369.6	-0.13%	-5.43%
INSURANCE	1390.7	1380.8	-0.71%	7.46%
SERVICES	852.6	856.1	0.41%	-2.56%
INDUSTRY	6411.3	6399.6	-0.18%	12.14%

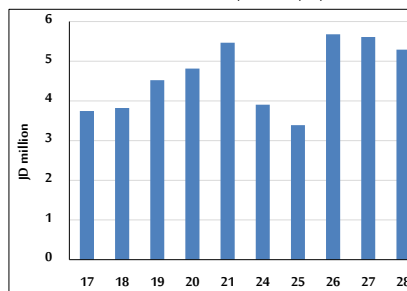
### STOCK PRICE MARKET INDEX WEIGHTED BY FREE FLOAT MARKET CAP. (2012=1000)

	WEDNESDAY 27/11/2024	THURSDAY 28/11/2024	% CHANGE	
			DAY BEFORE	YTD
FIRST MARKET	1355.9	1354.7	-0.09%	-0.31%
SECOND MARKET	833.0	841.6	1.04%	-2.62%

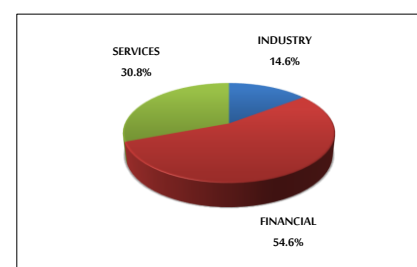
### MARKET CAPITALIZATION (JD)

	17,112,694,364	17,098,005,181	-0.09%	0.94%
--	----------------	----------------	--------	-------

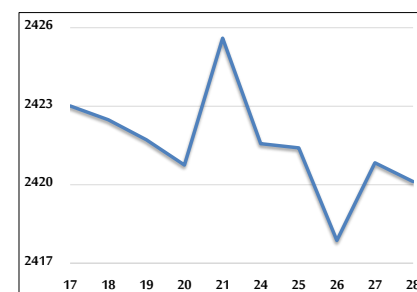
### VALUE TRADED FROM 17/11 TO 28/11/2024



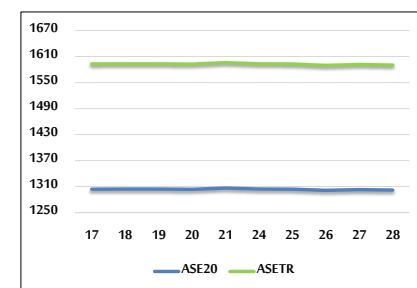
### VALUE TRADED BY SECTOR THURSDAY 28/11/2024



### GENERAL FREE FLOAT PRICE INDEX FROM 17/11 TO 28/11/2024



### ASE20 and ASETR FREE FLOAT PRICE INDEX FROM 17/11 TO 28/11/2024



### STOCK PRICE INDEX FROM 17/11 TO 28/11/2024

