

Daily Summary for Amman Stock Exchange

VALUE TRADED (JD)

	2023	2024	NET CHANGE	CHANGE (%)
Daily	2,745,155	4,930,499	2,185,344	79.61%
Cumulative (1/12-1/12)	2,745,155	4,930,499	2,185,344	79.61%
Cumulative (2/1-1/12)	1,360,307,540	1,071,260,968	-289,046,572	-21.25%

NO. OF SHARES TRADED

	2023	2024	NET CHANGE	CHANGE (%)
Daily	3,367,400	3,885,730	518,330	15.39%
Cumulative (1/12-1/12)	3,367,400	3,885,730	518,330	15.39%
Cumulative (2/1-1/12)	1,030,567,650	802,983,078	-227,584,572	-22.08%

NO. OF TRANSACTIONS

	2023	2024	NET CHANGE	CHANGE (%)
Daily	1,990	1,889	-101	-5.08%
Cumulative (1/12-1/12)	1,990	1,889	-101	-5.08%
Cumulative (2/1-1/12)	636,077	503,921	-132,156	-20.78%

SOME FINANCIAL RATIOS FOR THE ASE (1/12/2024)

SECTOR	P/E	P/BV	DIVIDEND YIELD (%)	TURNOVER (%)
FINANCIAL	8.019	0.746	6.004	0.044
SERVICES	12.623	1.258	6.167	0.110
INDUSTRY	9.256	1.536	7.339	0.082
OVERALL	8.485	0.984	6.791	0.063

STOCK PRICE INDEX WEIGHTED BY FREE FLOAT MARKET CAPITALIZATION (1999=1000)

	THURSDAY 28/11/2024	SUNDAY 01/12/2024	% CHANGE	
			DAY BEFORE	YTD
GENERAL	2420.1	2422.1	0.08%	-0.37%
FINANCIAL	2596.8	2602.0	0.20%	-4.65%
SERVICES	1656.0	1654.3	-0.10%	0.63%
INDUSTRY	5264.3	5257.7	-0.13%	11.42%

STOCK PRICE INDEX WEIGHTED BY FREE FLOAT MARKET CAPITALIZATION ASE20 (2014=1000)

	1301.9	1301.9	0.00%	-0.53%
--	--------	--------	-------	--------

Total Return Index ASETR (2021=1074)

	1590.1	1590.1	0.00%	6.83%
--	--------	--------	-------	-------

STOCK PRICE INDEX WEIGHTED BY MARKET CAPITALIZATION (1991=1000)

	THURSDAY 28/11/2024	SUNDAY 01/12/2024	% CHANGE	
			DAY BEFORE	YTD
GENERAL	4474.1	4475.9	0.04%	1.35%
BANKS	6369.6	6384.1	0.23%	-5.22%
INSURANCE	1380.8	1384.3	0.26%	7.74%
SERVICES	856.1	854.4	-0.20%	-2.76%
INDUSTRY	6399.6	6392.2	-0.12%	12.01%

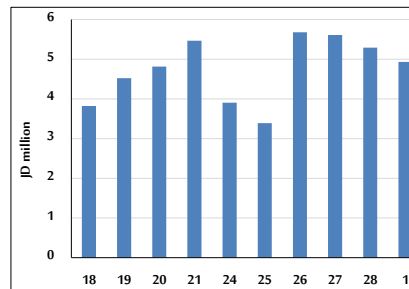
STOCK PRICE MARKET INDEX WEIGHTED BY FREE FLOAT MARKET CAP. (2012=1000)

	THURSDAY 28/11/2024	SUNDAY 01/12/2024	% CHANGE	
			DAY BEFORE	YTD
FIRST MARKET	1354.7	1355.3	0.04%	-0.27%
SECOND MARKET	841.6	847.3	0.67%	-1.97%

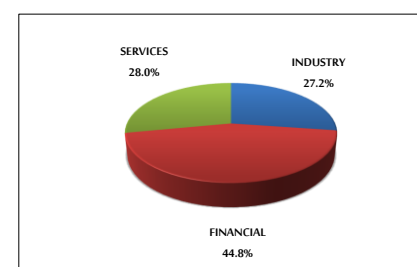
MARKET CAPITALIZATION (JD)

	17,098,005,181	17,103,888,856	0.03%	0.97%
--	----------------	----------------	-------	-------

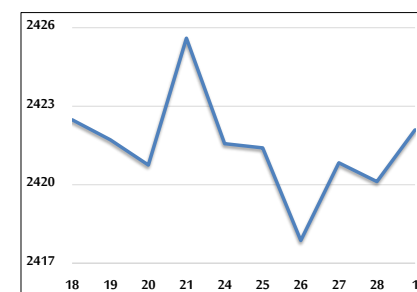
VALUE TRADED FROM 18/11 TO 1/12/2024



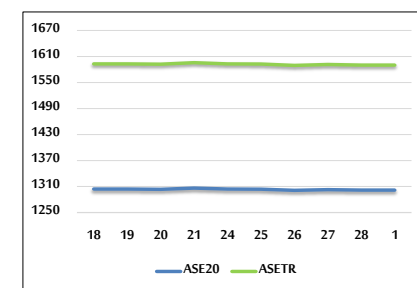
VALUE TRADED BY SECTOR SUNDAY 1/12/2024



GENERAL FREE FLOAT PRICE INDEX FROM 18/11 TO 1/12/2024



ASE20 and ASETR FREE FLOAT PRICE INDEX FROM 18/11 TO 1/12/2024



STOCK PRICE INDEX FROM 18/11 TO 1/12/2024

