

Daily Summary for Amman Stock Exchange

VALUE TRADED (JD)

	2024	2025	NET CHANGE	CHANGE (%)
Daily	3,623,594	8,944,917	5,321,323	146.85%
Cumulative (4/5-19/5)	43,110,630	119,335,989	76,225,359	176.81%
Cumulative (2/1-19/5)	425,035,046	624,006,067	198,971,021	46.81%

NO. OF SHARES TRADED

	2024	2025	NET CHANGE	CHANGE (%)
Daily	4,025,655	4,208,289	182,634	4.54%
Cumulative (4/5-19/5)	32,402,797	60,079,579	27,676,782	85.41%
Cumulative (2/1-19/5)	325,607,907	325,712,717	104,810	0.03%

NO. OF TRANSACTIONS

	2024	2025	NET CHANGE	CHANGE (%)
Daily	2,829	3,076	247	8.73%
Cumulative (4/5-19/5)	27,293	38,443	11,150	40.85%
Cumulative (2/1-19/5)	220,716	207,160	-13,556	-6.14%

SOME FINANCIAL RATIOS FOR THE ASE (19/5/2025)

SECTOR	P/E	P/BV	DIVIDEND YIELD (%)	TURNOVER (%)
FINANCIAL	7.582	0.786	6.390	0.054
SERVICES	12.874	1.151	6.048	0.129
INDUSTRY	10.342	1.685	7.247	0.050
OVERALL	8.532	1.040	7.031	0.069

ASE GENERAL FREE FLOAT WEIGHTED INDEX ASEGI (1999=1000)

	SUNDAY 18/05/2025	MONDAY 19/05/2025	% CHANGE	
			DAY BEFORE	YTD
GENERAL INDEX ASEGI	2650.3	2648.7	-0.06%	6.43%
FINANCIAL	2826.8	2815.2	-0.41%	6.19%
SERVICES	1742.8	1754.7	0.68%	3.62%
INDUSTRY	5971.7	5994.8	0.39%	8.38%

ASE FREE FLOAT WEIGHTED INDEX ASE20 (2014=1000)

	1438.4	1437.2	-0.08%	6.94%
--	--------	--------	--------	-------

TOTAL RETURN INDEX ASETR (2021=1074)

	1891.7	1890.1	-0.08%	15.14%
--	--------	--------	--------	--------

ASE WEIGHTED INDEX (1991=1000)

	SUNDAY 18/05/2025	MONDAY 19/05/2025	% CHANGE	
			DAY BEFORE	YTD
GENERAL	5065.8	5051.6	-0.28%	9.02%
BANKS	7278.4	7202.9	-1.04%	9.91%
INSURANCE	1529.3	1519.3	-0.66%	10.41%
SERVICES	900.2	904.4	0.46%	4.72%
INDUSTRY	7305.2	7338.1	0.45%	8.89%

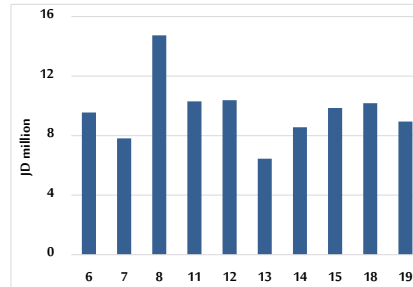
MARKET INDICES WEIGHTED BY FREE FLOAT MARKET CAP. (2012=1000)

	SUNDAY 18/05/2025	MONDAY 19/05/2025	% CHANGE	
			DAY BEFORE	YTD
FIRST MARKET	1490.1	1489.3	-0.06%	6.71%
SECOND MARKET	863.2	861.5	-0.20%	3.47%

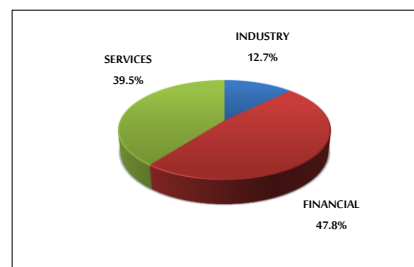
MARKET CAPITALIZATION (JD)

	19,076,504,196	19,038,798,809	-0.20%	7.83%
--	----------------	----------------	--------	-------

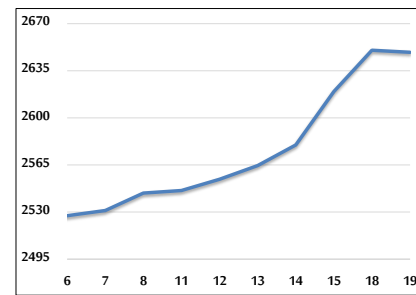
VALUE TRADED FROM 6/5 TO 19/5/2025



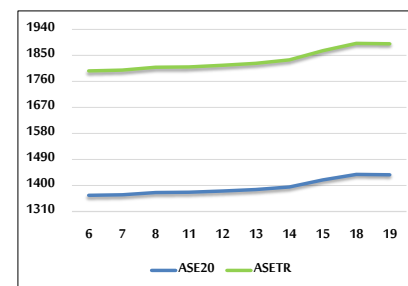
VALUE TRADED BY SECTOR MONDAY 19/5/2025



ASE GENERAL FREE FLOAT WEIGHTED INDEX FROM 6/5 TO 19/5/2025



ASE20 INDEX & ASETR INDEX FROM 6/5 TO 19/5/2025



ASE WEIGHTED INDEX FROM 6/5 TO 19/5/2025

