

## Daily Summary for Amman Stock Exchange

### VALUE TRADED (JD)

	2024	2025	NET CHANGE	CHANGE (%)
Daily	5,798,666	8,562,596	2,763,930	47.66%
Cumulative (4/5-14/5)	31,695,256	90,359,371	58,664,115	185.09%
Cumulative (2/1-14/5)	413,619,672	595,029,449	181,409,777	43.86%

### NO. OF SHARES TRADED

	2024	2025	NET CHANGE	CHANGE (%)
Daily	2,915,589	4,859,227	1,943,638	66.66%
Cumulative (4/5-14/5)	20,211,257	46,649,261	26,438,004	130.81%
Cumulative (2/1-14/5)	313,416,367	312,282,399	-1,133,968	-0.36%

### NO. OF TRANSACTIONS

	2024	2025	NET CHANGE	CHANGE (%)
Daily	2,744	3,724	980	35.71%
Cumulative (4/5-14/5)	19,111	27,715	8,604	45.02%
Cumulative (2/1-14/5)	212,534	196,432	-16,102	-7.58%

### SOME FINANCIAL RATIOS FOR THE ASE (14/5/2025)

SECTOR	P/E	P/BV	DIVIDEND YIELD (%)	TURNOVER (%)
FINANCIAL	7.236	0.750	6.695	0.063
SERVICES	12.722	1.137	6.120	0.131
INDUSTRY	10.256	1.671	7.307	0.087
OVERALL	8.293	1.011	7.235	0.080

### ASE GENERAL FREE FLOAT WEIGHTED INDEX ASEGI (1999=1000)

	TUESDAY 13/05/2025	WEDNESDAY 14/05/2025	% CHANGE	
			DAY BEFORE	YTD
GENERAL INDEX ASEGI	2564.5	2579.9	0.60%	3.66%
FINANCIAL	2687.2	2702.9	0.58%	1.96%
SERVICES	1738.9	1753.1	0.81%	3.53%
INDUSTRY	5927.6	5942.7	0.26%	7.44%

### ASE FREE FLOAT WEIGHTED INDEX ASE20 (2014=1000)

	1386.0	1395.0	0.65%	3.80%
--	--------	--------	-------	-------

### TOTAL RETURN INDEX ASETR (2021=1074)

	1822.7	1834.6	0.65%	11.76%
--	--------	--------	-------	--------

### ASE WEIGHTED INDEX (1991=1000)

	TUESDAY 13/05/2025	WEDNESDAY 14/05/2025	% CHANGE	
			DAY BEFORE	YTD
GENERAL	4876.5	4909.8	0.68%	5.96%
BANKS	6768.9	6843.2	1.10%	4.42%
INSURANCE	1479.5	1497.2	1.20%	8.81%
SERVICES	883.9	892.5	0.98%	3.35%
INDUSTRY	7281.8	7289.9	0.11%	8.17%

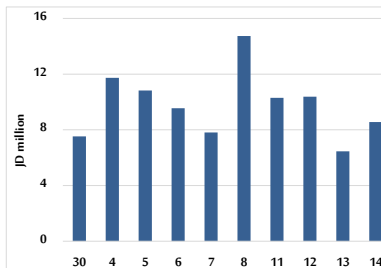
### MARKET INDICES WEIGHTED BY FREE FLOAT MARKET CAP. (2012=1000)

	TUESDAY 13/05/2025	WEDNESDAY 14/05/2025	% CHANGE	
			DAY BEFORE	YTD
FIRST MARKET	1439.1	1447.8	0.61%	3.74%
SECOND MARKET	856.5	864.2	0.90%	3.80%

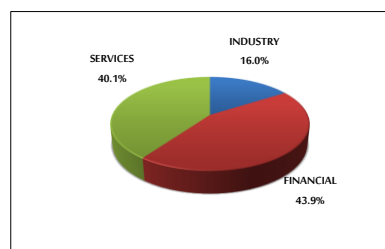
### MARKET CAPITALIZATION (JD)

	18,403,815,853	18,524,726,332	0.66%	4.92%
--	----------------	----------------	-------	-------

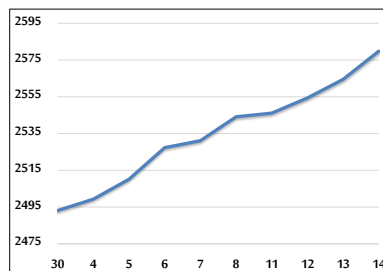
### VALUE TRADED FROM 30/4 TO 14/5/2025



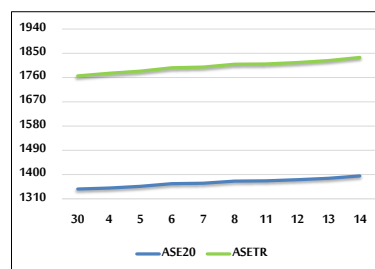
### VALUE TRADED BY SECTOR WEDNESDAY 14/5/2025



### ASE GENERAL FREE FLOAT WEIGHTED INDEX FROM 30/4 TO 14/5/2025



### ASE20 INDEX & ASETR INDEX FROM 30/4 TO 14/5/2025



### ASE WEIGHTED INDEX FROM 30/4 TO 14/5/2025

