

Daily Summary for Amman Stock Exchange

VALUE TRADED (JD)

	2024	2025	NET CHANGE	CHANGE (%)
Daily	2,542,921	5,585,047	3,042,126	119.63%
Cumulative (1/10-6/10)	15,281,119	29,363,539	14,082,420	92.16%
Cumulative (2/1-6/10)	893,026,931	1,530,165,320	637,138,389	71.35%

NO. OF SHARES TRADED

	2024	2025	NET CHANGE	CHANGE (%)
Daily	1,981,891	3,256,671	1,274,780	64.32%
Cumulative (1/10-6/10)	11,148,746	15,482,241	4,333,495	38.87%
Cumulative (2/1-6/10)	658,958,715	760,021,315	101,062,600	15.34%

NO. OF TRANSACTIONS

	2024	2025	NET CHANGE	CHANGE (%)
Daily	1,441	3,056	1,615	112.07%
Cumulative (1/10-6/10)	7,295	12,147	4,852	66.51%
Cumulative (2/1-6/10)	418,901	523,824	104,923	25.05%

SOME FINANCIAL RATIOS FOR THE ASE (6/10/2025)

SECTOR	P/E	P/BV	DIVIDEND YIELD (%)	TURNOVER (%)
FINANCIAL	8.359	0.887	5.679	0.042
SERVICES	13.304	1.242	5.736	0.069
INDUSTRY	14.160	2.306	5.297	0.074
OVERALL	10.350	1.278	5.726	0.051

ASE GENERAL FREE FLOAT WEIGHTED INDEX ASEGI (1999=1000)

	SUNDAY 05/10/2025	MONDAY 06/10/2025	% CHANGE	
			DAY BEFORE	YTD
GENERAL INDEX ASEGI	3050.9	3049.7	-0.04%	22.54%
FINANCIAL	3116.1	3113.0	-0.10%	17.43%
SERVICES	1942.6	1939.2	-0.18%	14.52%
INDUSTRY	7813.2	7848.8	0.46%	41.90%

ASE FREE FLOAT WEIGHTED INDEX ASE20 (2014=1000)

	2024	2025	% CHANGE	TURNOVER (%)
	1658.3	1657.9	-0.02%	23.35%

TOTAL RETURN INDEX ASETR (2021=1074)

	2024	2025	% CHANGE	TURNOVER (%)
	2180.8	2180.3	-0.02%	32.82%

ASE WEIGHTED INDEX (1991=1000)

	SUNDAY 05/10/2025	MONDAY 06/10/2025	% CHANGE	
			DAY BEFORE	YTD
GENERAL	6103.7	6119.9	0.26%	32.08%
BANKS	7956.9	7960.3	0.04%	21.47%
INSURANCE	1643.4	1644.9	0.09%	19.54%
SERVICES	975.2	971.3	-0.40%	12.46%
INDUSTRY	10024.1	10086.9	0.63%	49.68%

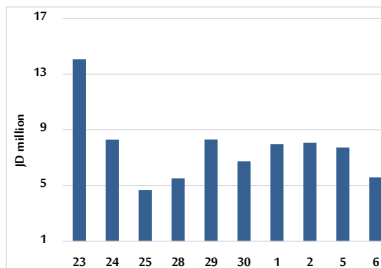
MARKET INDICES WEIGHTED BY FREE FLOAT MARKET CAP. (2012=1000)

	SUNDAY 05/10/2025	MONDAY 06/10/2025	% CHANGE	
			DAY BEFORE	YTD
FIRST MARKET	1716.1	1715.4	-0.04%	22.91%
SECOND MARKET	946.8	943.9	-0.31%	13.37%

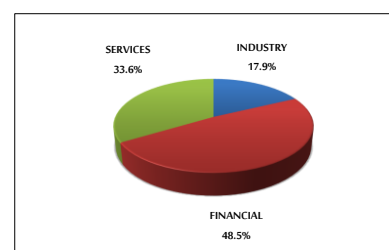
MARKET CAPITALIZATION (JD)

	2024	2025	% CHANGE	TURNOVER (%)
	23,021,762,227	23,078,860,888	0.25%	30.71%

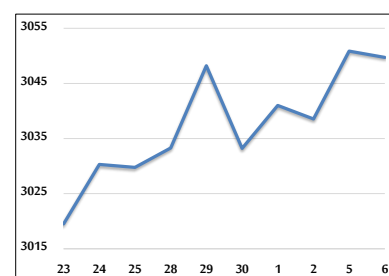
VALUE TRADED FROM 23/9 TO 6/10/2025



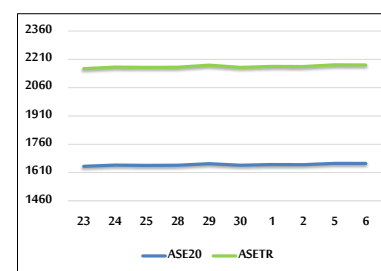
VALUE TRADED BY SECTOR MONDAY 6/10/2025



ASE GENERAL FREE FLOAT WEIGHTED INDEX 23/9 TO 6/10/2025



ASE20 INDEX & ASETR INDEX FROM 23/9 TO 6/10/2025



ASE WEIGHTED INDEX FROM 23/9 TO 6/10/2025

