

## Daily Summary for Amman Stock Exchange

### VALUE TRADED (JD)

	2024	2025	NET CHANGE	CHANGE (%)
Daily	4,161,079	8,339,140	4,178,061	100.41%
Cumulative (2/11-6/11)	21,630,502	46,367,804	24,737,302	114.36%
Cumulative (2/1-6/11)	991,960,183	1,821,328,093	829,367,910	83.61%

### NO. OF SHARES TRADED

	2024	2025	NET CHANGE	CHANGE (%)
Daily	2,838,646	5,076,754	2,238,108	78.84%
Cumulative (2/11-6/11)	17,559,902	23,695,895	6,135,993	34.94%
Cumulative (2/1-6/11)	735,752,931	896,146,371	160,393,440	21.80%

### NO. OF TRANSACTIONS

	2024	2025	NET CHANGE	CHANGE (%)
Daily	2,489	3,468	979	39.33%
Cumulative (2/11-6/11)	10,655	17,313	6,658	62.49%
Cumulative (2/1-6/11)	467,903	620,281	152,378	32.57%

### SOME FINANCIAL RATIOS FOR THE ASE (6/11/2025)

SECTOR	P/E	P/BV	DIVIDEND YIELD (%)	TURNOVER (%)
FINANCIAL	9.354	0.994	5.056	0.059
SERVICES	13.412	1.285	5.545	0.040
INDUSTRY	13.994	2.449	4.950	0.224
OVERALL	10.946	1.395	5.245	0.078

### ASE GENERAL FREE FLOAT WEIGHTED INDEX ASEGI (1999=1000)

	WEDNESDAY 05/11/2025	THURSDAY 06/11/2025	% CHANGE	
			DAY BEFORE	YTD
GENERAL INDEX ASEGI	3326.2	3338.1	0.36%	34.13%
FINANCIAL	3483.0	3505.0	0.63%	32.22%
SERVICES	1994.7	1997.9	0.16%	17.99%
INDUSTRY	8362.8	8344.4	-0.22%	50.86%

### ASE FREE FLOAT WEIGHTED INDEX ASE20 (2014=1000)

	1821.3	1828.9	0.42%	36.08%
--	--------	--------	-------	--------

### TOTAL RETURN INDEX ASETR (2021=1074)

	2395.2	2405.2	0.42%	46.52%
--	--------	--------	-------	--------

### ASE WEIGHTED INDEX (1991=1000)

	WEDNESDAY 05/11/2025	THURSDAY 06/11/2025	% CHANGE	
			DAY BEFORE	YTD
GENERAL	6661.9	6676.7	0.22%	44.09%
BANKS	8927.2	9010.5	0.93%	37.50%
INSURANCE	1778.2	1779.6	0.08%	29.33%
SERVICES	1020.1	1019.7	-0.04%	18.06%
INDUSTRY	10755.3	10711.9	-0.40%	58.95%

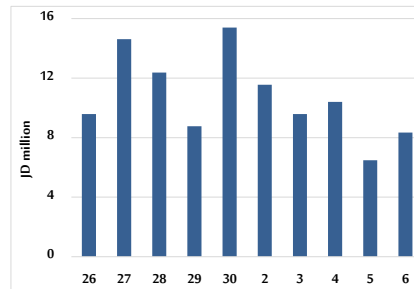
### MARKET INDICES WEIGHTED BY FREE FLOAT MARKET CAP. (2012=1000)

	WEDNESDAY 05/11/2025	THURSDAY 06/11/2025	% CHANGE	
			DAY BEFORE	YTD
FIRST MARKET	1878.7	1886.1	0.39%	35.14%
SECOND MARKET	965.7	963.8	-0.19%	15.77%

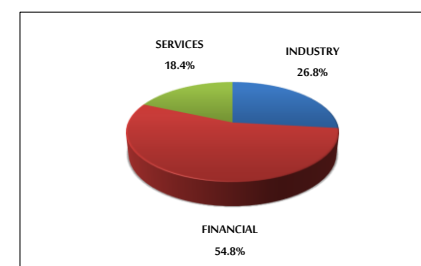
### MARKET CAPITALIZATION (JD)

	25,065,089,030	25,122,794,791	0.23%	42.29%
--	----------------	----------------	-------	--------

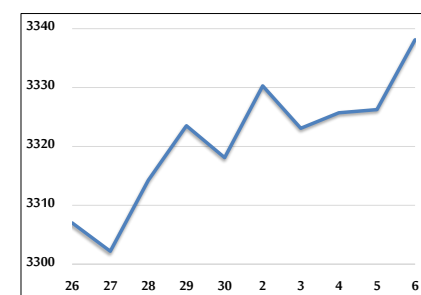
### VALUE TRADED FROM 26/10 TO 6/11/2025



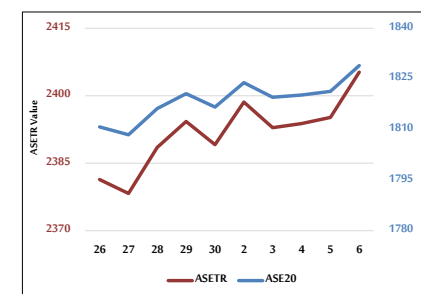
### VALUE TRADED BY SECTOR THURSDAY 6/11/2025



### ASE GENERAL FREE FLOAT WEIGHTED INDEX 26/10 TO 6/11/2025



### ASE20 INDEX & ASETR INDEX FROM 26/10 TO 6/11/2025



### ASE WEIGHTED INDEX FROM 26/10 TO 6/11/2025

