

Daily Summary for Amman Stock Exchange

VALUE TRADED (JD)

	2024	2025	NET CHANGE	CHANGE (%)
Daily	7,247,438	13,300,391	6,052,953	83.52%
Cumulative (2/11-11/11)	37,965,938	84,479,038	46,513,100	122.51%
Cumulative (2/1-11/11)	1,008,295,619	1,859,439,327	851,143,708	84.41%

NO. OF SHARES TRADED

	2024	2025	NET CHANGE	CHANGE (%)
Daily	5,708,620	6,533,864	825,244	14.46%
Cumulative (2/11-11/11)	29,325,371	44,560,864	15,235,493	51.95%
Cumulative (2/1-11/11)	747,518,400	917,011,340	169,492,940	22.67%

NO. OF TRANSACTIONS

	2024	2025	NET CHANGE	CHANGE (%)
Daily	2,488	4,507	2,019	81.15%
Cumulative (2/11-11/11)	17,873	30,893	13,020	72.85%
Cumulative (2/1-11/11)	475,121	633,861	158,740	33.41%

SOME FINANCIAL RATIOS FOR THE ASE (11/11/2025)

SECTOR	P/E	P/BV	DIVIDEND YIELD (%)	TURNOVER (%)
FINANCIAL	9.720	1.032	4.865	0.110
SERVICES	13.525	1.296	5.499	0.053
INDUSTRY	14.056	2.460	4.928	0.119
OVERALL	11.192	1.427	5.130	0.100

ASE GENERAL FREE FLOAT WEIGHTED INDEX ASEGI (1999=1000)

	MONDAY 10/11/2025	TUESDAY 11/11/2025	% CHANGE	
			DAY BEFORE	YTD
GENERAL INDEX ASEGI	3423.3	3424.9	0.05%	37.62%
FINANCIAL	3632.1	3633.4	0.04%	37.06%
SERVICES	2006.0	2010.2	0.21%	18.71%
INDUSTRY	8402.1	8382.4	-0.24%	51.54%

ASE FREE FLOAT WEIGHTED INDEX ASE20 (2014=1000)

	1879.8	1880.9	0.06%	39.95%
--	--------	--------	-------	--------

TOTAL RETURN INDEX ASETR (2021=1074)

	2472.2	2473.6	0.06%	50.69%
--	--------	--------	-------	--------

ASE WEIGHTED INDEX (1991=1000)

	MONDAY 10/11/2025	TUESDAY 11/11/2025	% CHANGE	
			DAY BEFORE	YTD
GENERAL	6841.7	6826.7	-0.22%	47.33%
BANKS	9421.0	9402.7	-0.19%	43.48%
INSURANCE	1764.8	1753.0	-0.67%	27.39%
SERVICES	1026.7	1025.6	-0.11%	18.76%
INDUSTRY	10801.4	10771.0	-0.28%	59.83%

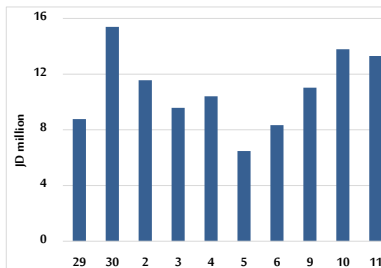
MARKET INDICES WEIGHTED BY FREE FLOAT MARKET CAP. (2012=1000)

	MONDAY 10/11/2025	TUESDAY 11/11/2025	% CHANGE	
			DAY BEFORE	YTD
FIRST MARKET	1936.5	1937.8	0.07%	38.85%
SECOND MARKET	969.7	967.9	-0.18%	16.26%

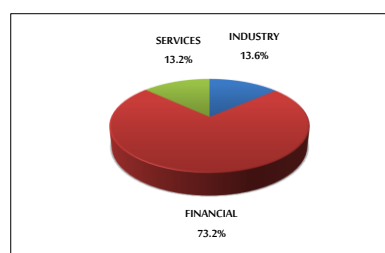
MARKET CAPITALIZATION (JD)

	25,704,110,406	25,649,956,126	-0.21%	45.28%
--	----------------	----------------	--------	--------

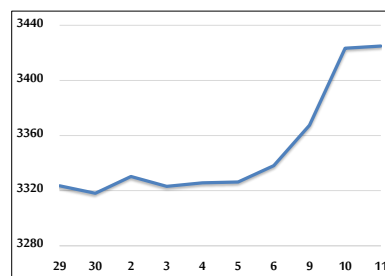
VALUE TRADED FROM 29/10 TO 11/11/2025



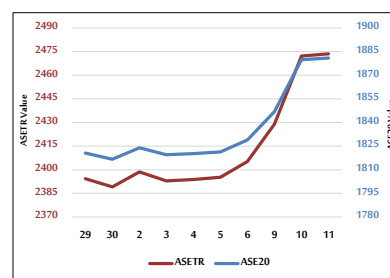
VALUE TRADED BY SECTOR TUESDAY 11/11/2025



ASE GENERAL FREE FLOAT WEIGHTED INDEX 29/10 TO 11/11/2025



ASE20 INDEX & ASETR INDEX FROM 29/10 TO 11/11/2025



ASE WEIGHTED INDEX FROM 29/10 TO 11/11/2025

