

Daily Summary for Amman Stock Exchange

VALUE TRADED (JD)

	2025	2026	NET CHANGE	CHANGE (%)
Daily	9,245,206	14,974,395	5,729,189	61.97%
Cumulative (1/3-25/3)	88,199,912	180,876,146	92,676,234	105.08%
Cumulative (4/1-25/3)	343,209,734	577,472,527	234,262,793	68.26%

NO. OF SHARES TRADED

	2025	2026	NET CHANGE	CHANGE (%)
Daily	4,377,842	3,737,757	-640,085	-14.62%
Cumulative (1/3-25/3)	49,274,248	49,324,069	49,821	0.10%
Cumulative (4/1-25/3)	186,710,198	220,693,135	33,982,937	18.20%

NO. OF TRANSACTIONS

	2025	2026	NET CHANGE	CHANGE (%)
Daily	2,740	2,989	249	9.09%
Cumulative (1/3-25/3)	28,803	41,602	12,799	44.44%
Cumulative (4/1-25/3)	118,156	178,111	59,955	50.74%

SOME FINANCIAL RATIOS FOR THE ASE (25/3/2026)

SECTOR	P/E	P/BV	DIVIDEND YIELD (%)	TURNOVER (%)
FINANCIAL	9.253	0.932	4.541	0.036
SERVICES	13.881	1.428	4.885	0.149
INDUSTRY	15.564	2.921	4.120	0.042
OVERALL	11.615	1.456	4.491	0.058

ASE GENERAL FREE FLOAT WEIGHTED INDEX ASEGI (1999=1000)

	TUESDAY 24/03/2026	WEDNESDAY 25/03/2026	% CHANGE	
			DAY BEFORE	YTD
GENERAL INDEX ASEGI	3672.2	3657.5	-0.40%	1.27%
FINANCIAL	3654.1	3649.5	-0.13%	-3.34%
SERVICES	2312.7	2288.0	-1.07%	5.33%
INDUSTRY	9841.2	9813.4	-0.28%	10.60%

ASE FREE FLOAT WEIGHTED INDEX ASE20 (2014=1000)

	2012.7	2004.8	-0.39%	1.32%
--	--------	--------	--------	-------

TOTAL RETURN INDEX ASETR (2021=1074)

	2660.0	2649.6	-0.39%	1.82%
--	--------	--------	--------	-------

ASE WEIGHTED INDEX (1991=1000)

	TUESDAY 24/03/2026	WEDNESDAY 25/03/2026	% CHANGE	
			DAY BEFORE	YTD
GENERAL	7478.2	7451.9	-0.35%	5.61%
BANKS	9335.6	9304.0	-0.34%	-1.48%
INSURANCE	1849.4	1846.2	-0.18%	3.53%
SERVICES	1120.2	1112.6	-0.67%	2.29%
INDUSTRY	12956.6	12918.0	-0.30%	13.29%

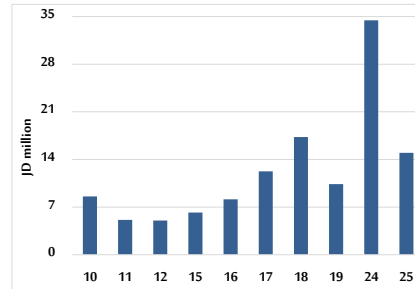
MARKET INDICES WEIGHTED BY FREE FLOAT MARKET CAP. (2012=1000)

	TUESDAY 24/03/2026	WEDNESDAY 25/03/2026	% CHANGE	
			DAY BEFORE	YTD
FIRST MARKET	2083.4	2075.3	-0.39%	1.74%
SECOND MARKET	961.4	957.0	-0.45%	-6.39%

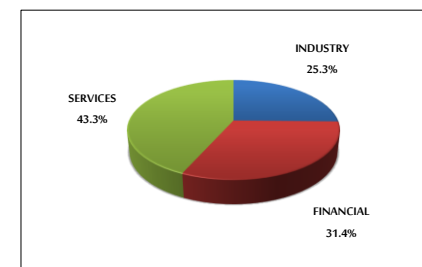
MARKET CAPITALIZATION (JD)

	27,968,130,444	27,867,074,867	-0.36%	5.19%
--	----------------	----------------	--------	-------

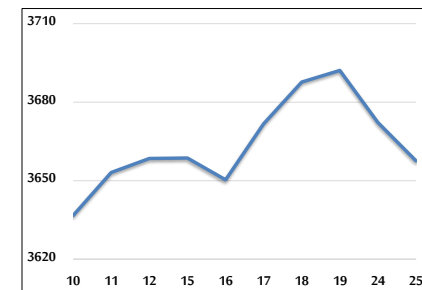
VALUE TRADED FROM 10/3 TO 25/3/2026



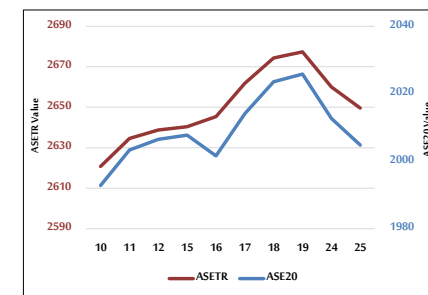
VALUE TRADED BY SECTOR WEDNESDAY 25/3/2026



ASE GENERAL FREE FLOAT WEIGHTED INDEX 10/3 TO 25/3/2026



ASE20 INDEX & ASETR INDEX FROM 10/3 TO 25/3/2026



ASE WEIGHTED INDEX FROM 10/3 TO 25/3/2026

