

Daily Summary for Amman Stock Exchange

VALUE TRADED (JD)

	2025	2026	NET CHANGE	CHANGE (%)
Daily	5,612,607	20,213,277	14,600,670	260.14%
Cumulative (1/3-31/3)	110,235,476	253,179,431	142,943,955	129.67%
Cumulative (4/1-31/3)	365,245,298	649,775,812	284,530,514	77.90%

NO. OF SHARES TRADED

	2025	2026	NET CHANGE	CHANGE (%)
Daily	2,419,773	3,922,112	1,502,339	62.09%
Cumulative (1/3-31/3)	58,473,949	63,631,227	5,157,278	8.82%
Cumulative (4/1-31/3)	195,909,899	235,000,293	39,090,394	19.95%

NO. OF TRANSACTIONS

	2025	2026	NET CHANGE	CHANGE (%)
Daily	1,953	3,628	1,675	85.77%
Cumulative (1/3-31/3)	35,798	55,202	19,404	54.20%
Cumulative (4/1-31/3)	125,151	191,711	66,560	53.18%

SOME FINANCIAL RATIOS FOR THE ASE (31/3/2026)

SECTOR	P/E	P/BV	DIVIDEND YIELD (%)	TURNOVER (%)
FINANCIAL	8.967	0.909	4.682	0.044
SERVICES	13.951	1.407	4.860	0.122
INDUSTRY	16.110	2.859	4.924	0.060
OVERALL	11.633	1.441	4.926	0.061

ASE GENERAL FREE FLOAT WEIGHTED INDEX ASEGI (1999=1000)

	MONDAY 30/03/2026	TUESDAY 31/03/2026	% CHANGE	
			DAY BEFORE	YTD
GENERAL INDEX ASEGI	3639.7	3641.3	0.04%	0.82%
FINANCIAL	3593.2	3583.9	-0.26%	-5.08%
SERVICES	2296.0	2305.6	0.42%	6.13%
INDUSTRY	9973.0	10007.8	0.35%	12.79%

ASE FREE FLOAT WEIGHTED INDEX ASE20 (2014=1000)

	1993.5	1994.5	0.05%	0.80%
--	--------	--------	-------	-------

TOTAL RETURN INDEX ASETR (2021=1074)

	2656.7	2658.1	0.05%	2.15%
--	--------	--------	-------	-------

ASE WEIGHTED INDEX (1991=1000)

	MONDAY 30/03/2026	TUESDAY 31/03/2026	% CHANGE	
			DAY BEFORE	YTD
GENERAL	7430.3	7433.8	0.05%	5.35%
BANKS	9037.7	8991.6	-0.51%	-4.79%
INSURANCE	1829.8	1834.1	0.23%	2.85%
SERVICES	1111.6	1110.3	-0.11%	2.07%
INDUSTRY	13158.0	13227.3	0.53%	16.00%

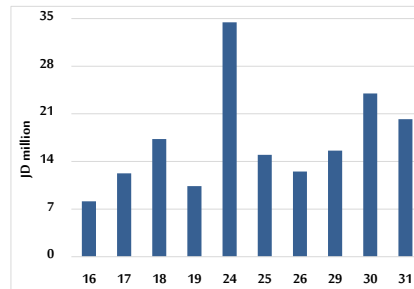
MARKET INDICES WEIGHTED BY FREE FLOAT MARKET CAP. (2012=1000)

	MONDAY 30/03/2026	TUESDAY 31/03/2026	% CHANGE	
			DAY BEFORE	YTD
FIRST MARKET	2064.0	2065.6	0.08%	1.26%
SECOND MARKET	952.0	945.3	-0.70%	-7.54%

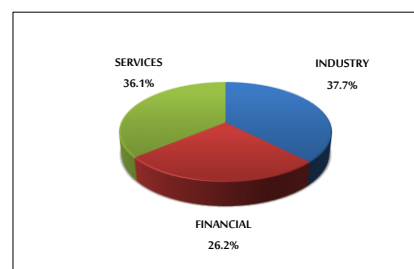
MARKET CAPITALIZATION (JD)

	27,783,092,899	27,793,425,062	0.04%	4.91%
--	----------------	----------------	-------	-------

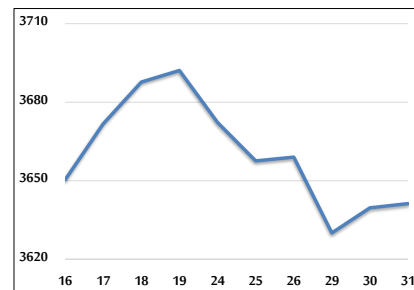
VALUE TRADED FROM 16/3 TO 31/3/2026



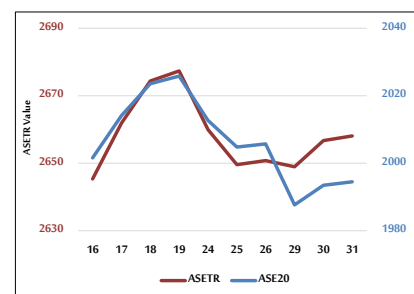
VALUE TRADED BY SECTOR TUESDAY 31/3/2026



ASE GENERAL FREE FLOAT WEIGHTED INDEX 16/3 TO 31/3/2026



ASE20 INDEX & ASETR INDEX FROM 16/3 TO 31/3/2026



ASE WEIGHTED INDEX FROM 16/3 TO 31/3/2026

