

Daily Summary for Amman Stock Exchange

VALUE TRADED (JD)

	2025	2026	NET CHANGE	CHANGE (%)
Daily	7,415,981	10,480,778	3,064,797	41.33%
Cumulative (1/4-6/4)	32,074,305	60,078,202	28,003,897	87.31%
Cumulative (4/1-6/4)	397,319,603	709,854,014	312,534,411	78.66%

NO. OF SHARES TRADED

	2025	2026	NET CHANGE	CHANGE (%)
Daily	5,299,189	2,885,560	-2,413,629	-45.55%
Cumulative (1/4-6/4)	14,815,840	14,498,003	-317,837	-2.15%
Cumulative (4/1-6/4)	210,725,739	249,498,296	38,772,557	18.40%

NO. OF TRANSACTIONS

	2025	2026	NET CHANGE	CHANGE (%)
Daily	2,293	2,806	513	22.37%
Cumulative (1/4-6/4)	9,682	13,032	3,350	34.60%
Cumulative (4/1-6/4)	134,833	204,743	69,910	51.85%

SOME FINANCIAL RATIOS FOR THE ASE (6/4/2026)

SECTOR	P/E	P/BV	DIVIDEND YIELD (%)	TURNOVER (%)
FINANCIAL	9.052	0.917	4.934	0.028
SERVICES	13.941	1.381	4.493	0.058
INDUSTRY	15.860	2.762	4.209	0.112
OVERALL	11.558	1.428	4.668	0.045

ASE GENERAL FREE FLOAT WEIGHTED INDEX ASEGI (1999=1000)

	SUNDAY 05/04/2026	MONDAY 06/04/2026	% CHANGE	
			DAY BEFORE	YTD
GENERAL INDEX ASEGI	3652.0	3659.4	0.20%	1.32%
FINANCIAL	3616.4	3619.1	0.07%	-4.14%
SERVICES	2307.3	2313.0	0.25%	6.48%
INDUSTRY	9851.5	9901.9	0.51%	11.60%

ASE FREE FLOAT WEIGHTED INDEX ASE20 (2014=1000)

	2000.6	2005.8	0.26%	1.37%
--	--------	--------	-------	-------

TOTAL RETURN INDEX ASETR (2021=1074)

	2667.7	2674.6	0.26%	2.79%
--	--------	--------	-------	-------

ASE WEIGHTED INDEX (1991=1000)

	SUNDAY 05/04/2026	MONDAY 06/04/2026	% CHANGE	
			DAY BEFORE	YTD
GENERAL	7372.1	7408.3	0.49%	4.99%
BANKS	9046.0	9090.4	0.49%	-3.74%
INSURANCE	1815.2	1808.8	-0.35%	1.43%
SERVICES	1105.2	1107.6	0.21%	1.82%
INDUSTRY	12957.0	13029.8	0.56%	14.27%

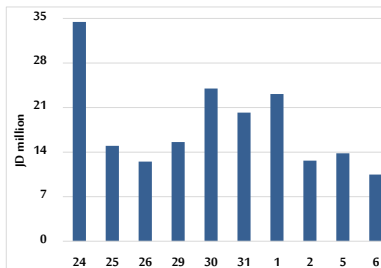
MARKET INDICES WEIGHTED BY FREE FLOAT MARKET CAP. (2012=1000)

	SUNDAY 05/04/2026	MONDAY 06/04/2026	% CHANGE	
			DAY BEFORE	YTD
FIRST MARKET	2071.2	2075.5	0.21%	1.75%
SECOND MARKET	953.7	953.5	-0.02%	-6.74%

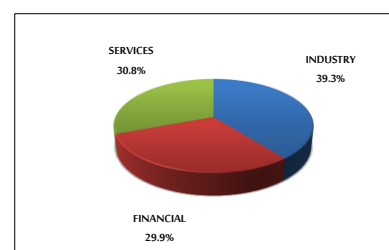
MARKET CAPITALIZATION (JD)

	27,583,749,621	27,712,037,569	0.47%	4.60%
--	----------------	----------------	-------	-------

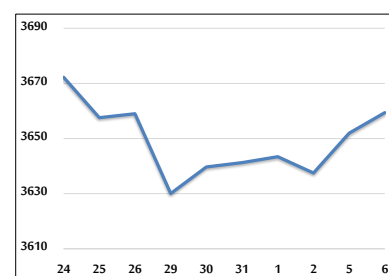
VALUE TRADED FROM 24/3 TO 6/4/2026



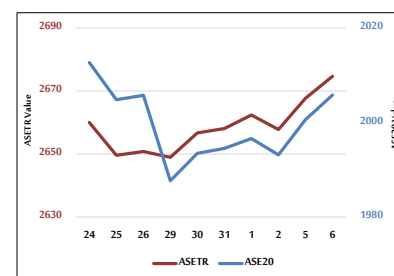
VALUE TRADED BY SECTOR MONDAY 6/4/2026



ASE GENERAL FREE FLOAT WEIGHTED INDEX 24/3 TO 6/4/2026



ASE20 INDEX & ASETR INDEX FROM 24/3 TO 6/4/2026



ASE WEIGHTED INDEX FROM 24/3 TO 6/4/2026

