

Daily Summary for Amman Stock Exchange

VALUE TRADED (JD)

	2025	2026	NET CHANGE	CHANGE (%)
Daily	6,456,617	9,030,836	2,574,219	39.87%
Cumulative (1/4-7/4)	38,530,922	69,109,038	30,578,116	79.36%
Cumulative (4/1-7/4)	403,776,220	718,884,850	315,108,630	78.04%

NO. OF SHARES TRADED

	2025	2026	NET CHANGE	CHANGE (%)
Daily	2,682,239	2,357,258	-324,981	-12.12%
Cumulative (1/4-7/4)	17,498,079	16,855,261	-642,818	-3.67%
Cumulative (4/1-7/4)	213,407,978	251,855,554	38,447,576	18.02%

NO. OF TRANSACTIONS

	2025	2026	NET CHANGE	CHANGE (%)
Daily	1,801	2,570	769	42.70%
Cumulative (1/4-7/4)	11,483	15,602	4,119	35.87%
Cumulative (4/1-7/4)	136,634	207,313	70,679	51.73%

SOME FINANCIAL RATIOS FOR THE ASE (7/4/2026)

SECTOR	P/E	P/BV	DIVIDEND YIELD (%)	TURNOVER (%)
FINANCIAL	9.077	0.919	4.920	0.028
SERVICES	13.939	1.381	4.493	0.068
INDUSTRY	15.847	2.760	4.212	0.036
OVERALL	11.567	1.429	4.664	0.037

ASE GENERAL FREE FLOAT WEIGHTED INDEX ASEGI (1999=1000)

	MONDAY 06/04/2026	TUESDAY 07/04/2026	% CHANGE	
			DAY BEFORE	YTD
GENERAL INDEX ASEGI	3659.4	3656.8	-0.07%	1.25%
FINANCIAL	3619.1	3621.2	0.06%	-4.09%
SERVICES	2313.0	2307.3	-0.25%	6.21%
INDUSTRY	9901.9	9877.1	-0.25%	11.32%

ASE FREE FLOAT WEIGHTED INDEX ASE20 (2014=1000)

	2005.8	2003.1	-0.13%	1.24%
--	--------	--------	--------	-------

TOTAL RETURN INDEX ASETR (2021=1074)

	2674.6	2675.1	0.02%	2.80%
--	--------	--------	-------	-------

ASE WEIGHTED INDEX (1991=1000)

	MONDAY 06/04/2026	TUESDAY 07/04/2026	% CHANGE	
			DAY BEFORE	YTD
GENERAL	7408.3	7414.6	0.09%	5.08%
BANKS	9090.4	9119.5	0.32%	-3.43%
INSURANCE	1808.8	1815.4	0.36%	1.80%
SERVICES	1107.6	1106.8	-0.07%	1.75%
INDUSTRY	13029.8	13018.3	-0.09%	14.17%

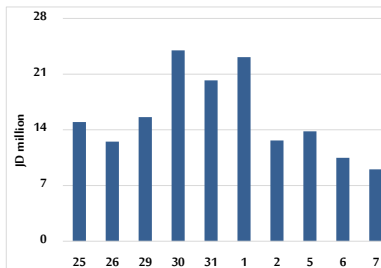
MARKET INDICES WEIGHTED BY FREE FLOAT MARKET CAP. (2012=1000)

	MONDAY 06/04/2026	TUESDAY 07/04/2026	% CHANGE	
			DAY BEFORE	YTD
FIRST MARKET	2075.5	2073.9	-0.08%	1.67%
SECOND MARKET	953.5	951.7	-0.19%	-6.92%

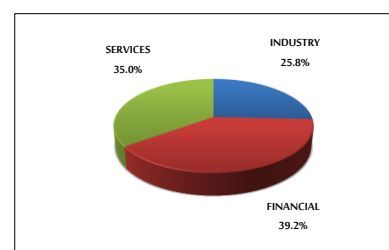
MARKET CAPITALIZATION (JD)

	27,712,037,569	27,734,074,819	0.08%	4.68%
--	----------------	----------------	-------	-------

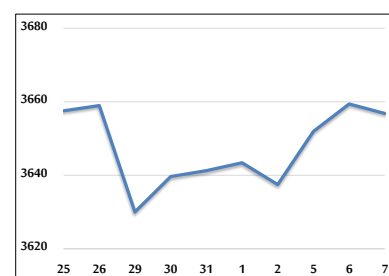
VALUE TRADED FROM 25/3 TO 7/4/2026



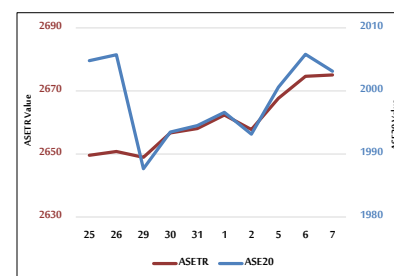
VALUE TRADED BY SECTOR TUESDAY 7/4/2026



ASE GENERAL FREE FLOAT WEIGHTED INDEX 25/3 TO 7/4/2026



ASE20 INDEX & ASETR INDEX FROM 25/3 TO 7/4/2026



ASE WEIGHTED INDEX FROM 25/3 TO 7/4/2026

