

## Daily Summary for Amman Stock Exchange

### VALUE TRADED (JD)

	2025	2026	NET CHANGE	CHANGE (%)
Daily	14,738,496	11,159,458	-3,579,038	-24.28%
Cumulative (3/5-7/5)	54,665,632	66,747,216	12,081,584	22.10%
Cumulative (4/1-7/5)	559,335,710	1,061,893,564	502,557,854	89.85%

### NO. OF SHARES TRADED

	2025	2026	NET CHANGE	CHANGE (%)
Daily	11,081,151	5,412,263	-5,668,888	-51.16%
Cumulative (3/5-7/5)	29,168,568	30,937,654	1,769,086	6.07%
Cumulative (4/1-7/5)	294,801,706	367,741,942	72,940,236	24.74%

### NO. OF TRANSACTIONS

	2025	2026	NET CHANGE	CHANGE (%)
Daily	3,107	3,612	505	16.25%
Cumulative (3/5-7/5)	15,616	21,811	6,195	39.67%
Cumulative (4/1-7/5)	184,333	299,273	114,940	62.35%

### SOME FINANCIAL RATIOS FOR THE ASE (7/5/2026)

SECTOR	P/E	P/BV	DIVIDEND YIELD (%)	TURNOVER (%)
FINANCIAL	9.466	0.969	5.039	0.067
SERVICES	12.884	1.465	4.868	0.045
INDUSTRY	15.722	2.801	4.957	0.223
OVERALL	11.692	1.481	5.115	0.084

### ASE GENERAL FREE FLOAT WEIGHTED INDEX ASEGI (1999=1000)

	WEDNESDAY 06/05/2026	THURSDAY 07/05/2026	% CHANGE	
			DAY BEFORE	YTD
GENERAL INDEX ASEGI	3862.5	3863.0	0.01%	6.96%
FINANCIAL	3777.5	3781.7	0.11%	0.16%
SERVICES	2550.9	2539.0	-0.47%	16.88%
INDUSTRY	10059.9	10106.5	0.46%	13.90%

### ASE FREE FLOAT WEIGHTED INDEX ASE20 (2014=1000)

	2111.0	2110.9	0.00%	6.69%

### TOTAL RETURN INDEX ASETR (2021=1074)

	2920.7	2920.6	0.00%	12.24%

### ASE WEIGHTED INDEX (1991=1000)

	WEDNESDAY 06/05/2026	THURSDAY 07/05/2026	% CHANGE	
			DAY BEFORE	YTD
GENERAL	7644.4	7683.0	0.50%	8.89%
BANKS	9556.6	9599.5	0.45%	1.65%
INSURANCE	1911.7	1916.4	0.25%	7.47%
SERVICES	1140.9	1142.4	0.12%	5.02%
INDUSTRY	13226.6	13309.3	0.62%	16.72%

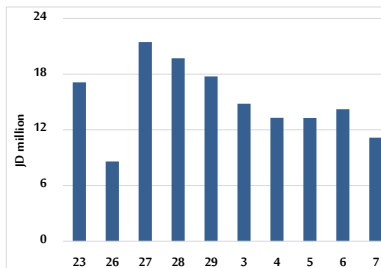
### MARKET INDICES WEIGHTED BY FREE FLOAT MARKET CAP. (2012=1000)

	WEDNESDAY 06/05/2026	THURSDAY 07/05/2026	% CHANGE	
			DAY BEFORE	YTD
FIRST MARKET	2184.1	2183.1	-0.05%	7.02%
SECOND MARKET	1018.2	1029.0	1.06%	0.64%

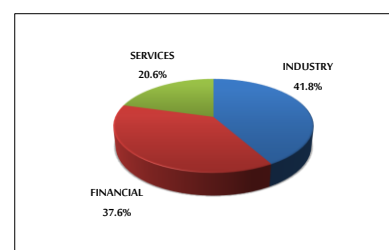
### MARKET CAPITALIZATION (JD)

	28,617,486,208	28,754,769,353	0.48%	8.54%

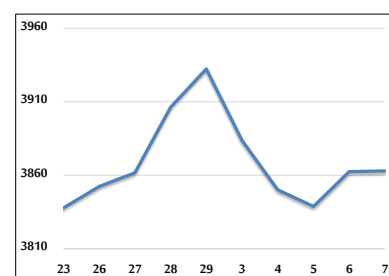
### VALUE TRADED FROM 23/4 TO 7/5/2026



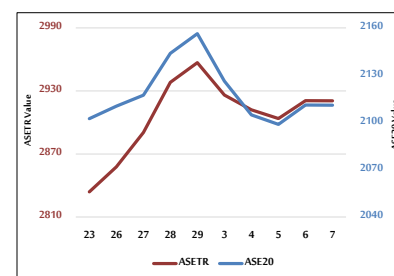
### VALUE TRADED BY SECTOR THURSDAY 7/5/2026



### ASE GENERAL FREE FLOAT WEIGHTED INDEX 23/4 TO 7/5/2026



### ASE20 INDEX & ASETR INDEX FROM 23/4 TO 7/5/2026



### ASE WEIGHTED INDEX FROM 23/4 TO 7/5/2026

