

Daily Summary for Amman Stock Exchange

VALUE TRADED (JD)

	2025	2026	NET CHANGE	CHANGE (%)
Daily	6,489,307	16,341,896	9,852,589	151.83%
Cumulative (1/6-17/6)	91,848,405	247,493,124	155,644,719	169.46%
Cumulative (4/1-17/6)	779,364,321	1,526,152,185	746,787,864	95.82%

NO. OF SHARES TRADED

	2025	2026	NET CHANGE	CHANGE (%)
Daily	2,556,333	6,439,720	3,883,387	151.91%
Cumulative (1/6-17/6)	36,743,518	71,727,631	34,984,113	95.21%
Cumulative (4/1-17/6)	396,276,853	517,345,711	121,068,858	30.55%

NO. OF TRANSACTIONS

	2025	2026	NET CHANGE	CHANGE (%)
Daily	1,802	5,208	3,406	189.01%
Cumulative (1/6-17/6)	30,413	65,924	35,511	116.76%
Cumulative (4/1-17/6)	259,012	424,907	165,895	64.05%

SOME FINANCIAL RATIOS FOR THE ASE (17/6/2026)

SECTOR	P/E	P/BV	DIVIDEND YIELD (%)	TURNOVER (%)
FINANCIAL	9.910	1.015	4.813	0.066
SERVICES	13.086	1.488	4.793	0.072
INDUSTRY	15.577	2.775	5.003	0.258
OVERALL	11.902	1.507	5.024	0.099

ASE GENERAL FREE FLOAT WEIGHTED INDEX ASEGI (1999=1000)

	MONDAY 15/06/2026	WEDNESDAY 17/06/2026	% CHANGE	
			DAY BEFORE	YTD
GENERAL INDEX ASEGI	4019.8	3969.2	-1.26%	9.90%
FINANCIAL	3932.8	3908.1	-0.63%	3.51%
SERVICES	2689.2	2633.2	-2.08%	21.22%
INDUSTRY	10227.6	10046.4	-1.77%	13.23%

ASE FREE FLOAT WEIGHTED INDEX ASE20 (2014=1000)

	2196.7	2171.4	-1.15%	9.74%
--	--------	--------	--------	-------

TOTAL RETURN INDEX ASETR (2021=1074)

	3039.3	3004.3	-1.15%	15.45%
--	--------	--------	--------	--------

ASE WEIGHTED INDEX (1991=1000)

	MONDAY 15/06/2026	WEDNESDAY 17/06/2026	% CHANGE	
			DAY BEFORE	YTD
GENERAL	7926.2	7817.9	-1.37%	10.80%
BANKS	10163.7	10076.8	-0.86%	6.70%
INSURANCE	1941.1	1933.6	-0.39%	8.43%
SERVICES	1146.8	1143.0	-0.33%	5.08%
INDUSTRY	13500.1	13226.1	-2.03%	15.99%

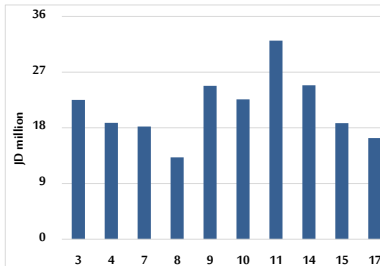
MARKET INDICES WEIGHTED BY FREE FLOAT MARKET CAP. (2012=1000)

	MONDAY 15/06/2026	WEDNESDAY 17/06/2026	% CHANGE	
			DAY BEFORE	YTD
FIRST MARKET	2273.3	2245.3	-1.23%	10.07%
SECOND MARKET	1045.3	1040.8	-0.43%	1.80%

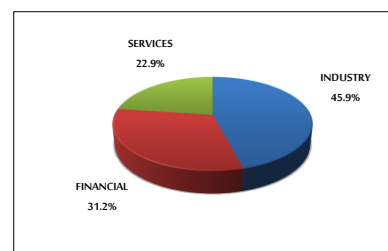
MARKET CAPITALIZATION (JD)

	29,435,061,027	29,048,484,898	-1.31%	9.64%
--	----------------	----------------	--------	-------

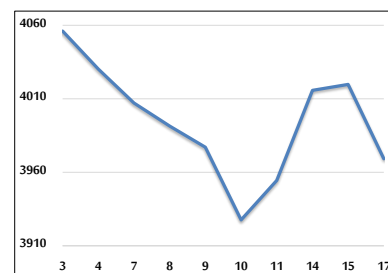
VALUE TRADED FROM 3/6 TO 17/6/2026



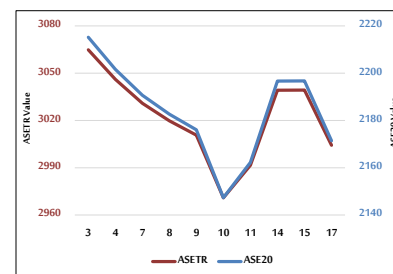
VALUE TRADED BY SECTOR WEDNESDAY 17/6/2026



ASE GENERAL FREE FLOAT WEIGHTED INDEX 3/6 TO 17/6/2026



ASE20 INDEX & ASETR INDEX FROM 3/6 TO 17/6/2026



ASE WEIGHTED INDEX FROM 3/6 TO 17/6/2026

