

Daily Summary for Amman Stock Exchange

VALUE TRADED (JD)

	2025	2026	NET CHANGE	CHANGE (%)
Daily	19,965,038	15,558,254	-4,406,784	-22.07%
Cumulative (1/6-18/6)	111,813,443	263,051,378	151,237,935	135.26%
Cumulative (4/1-18/6)	799,329,359	1,541,710,439	742,381,080	92.88%

NO. OF SHARES TRADED

	2025	2026	NET CHANGE	CHANGE (%)
Daily	9,553,488	5,370,633	-4,182,855	-43.78%
Cumulative (1/6-18/6)	46,297,006	77,098,264	30,801,258	66.53%
Cumulative (4/1-18/6)	405,830,341	522,716,344	116,886,003	28.80%

NO. OF TRANSACTIONS

	2025	2026	NET CHANGE	CHANGE (%)
Daily	2,548	5,165	2,617	102.71%
Cumulative (1/6-18/6)	32,961	71,089	38,128	115.68%
Cumulative (4/1-18/6)	261,560	430,072	168,512	64.43%

SOME FINANCIAL RATIOS FOR THE ASE (18/6/2026)

SECTOR	P/E	P/BV	DIVIDEND YIELD (%)	TURNOVER (%)
FINANCIAL	9.915	1.016	4.810	0.059
SERVICES	13.095	1.489	4.790	0.073
INDUSTRY	15.425	2.748	5.052	0.181
OVERALL	11.853	1.501	5.045	0.082

ASE GENERAL FREE FLOAT WEIGHTED INDEX ASEGI (1999=1000)

	WEDNESDAY 17/06/2026	THURSDAY 18/06/2026	% CHANGE	
			DAY BEFORE	YTD
GENERAL INDEX ASEGI	3969.2	3963.1	-0.15%	9.73%
FINANCIAL	3908.1	3904.9	-0.08%	3.43%
SERVICES	2633.2	2638.5	0.20%	21.46%
INDUSTRY	10046.4	9955.1	-0.91%	12.20%

ASE FREE FLOAT WEIGHTED INDEX ASE20 (2014=1000)

	2171.4	2169.4	-0.09%	9.64%
--	--------	--------	--------	-------

TOTAL RETURN INDEX ASETR (2021=1074)

	3004.3	3001.5	-0.09%	15.35%
--	--------	--------	--------	--------

ASE WEIGHTED INDEX (1991=1000)

	WEDNESDAY 17/06/2026	THURSDAY 18/06/2026	% CHANGE	
			DAY BEFORE	YTD
GENERAL	7817.9	7785.6	-0.41%	10.34%
BANKS	10076.8	10080.2	0.03%	6.74%
INSURANCE	1933.6	1936.7	0.16%	8.61%
SERVICES	1143.0	1145.0	0.17%	5.26%
INDUSTRY	13226.1	13101.8	-0.94%	14.90%

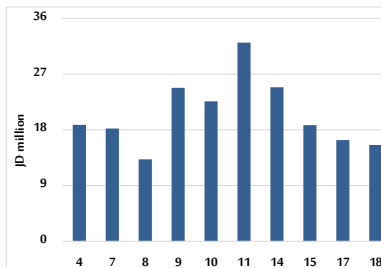
MARKET INDICES WEIGHTED BY FREE FLOAT MARKET CAP. (2012=1000)

	WEDNESDAY 17/06/2026	THURSDAY 18/06/2026	% CHANGE	
			DAY BEFORE	YTD
FIRST MARKET	2245.3	2242.1	-0.14%	9.92%
SECOND MARKET	1040.8	1041.8	0.10%	1.90%

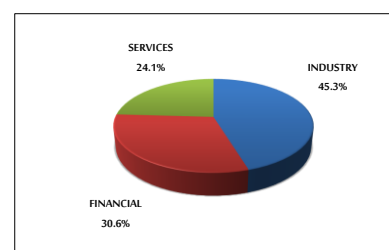
MARKET CAPITALIZATION (JD)

	29,048,484,898	28,935,706,628	-0.39%	9.22%
--	----------------	----------------	--------	-------

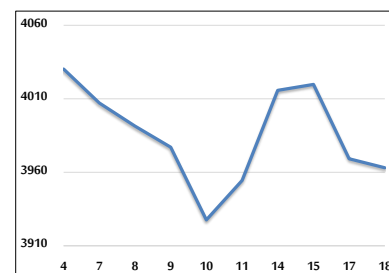
VALUE TRADED FROM 4/6 TO 18/6/2026



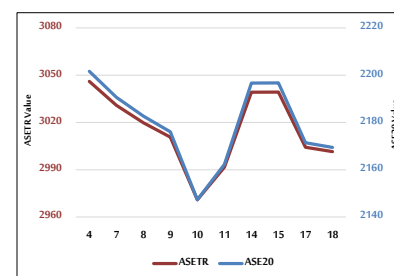
VALUE TRADED BY SECTOR THURSDAY 18/6/2026



ASE GENERAL FREE FLOAT WEIGHTED INDEX 4/6 TO 18/6/2026



ASE20 INDEX & ASETR INDEX FROM 4/6 TO 18/6/2026



ASE WEIGHTED INDEX FROM 4/6 TO 18/6/2026

