

Daily Summary for Amman Stock Exchange

VALUE TRADED (JD)

	2025	2026	NET CHANGE	CHANGE (%)
Daily	9,447,390	15,377,042	5,929,652	62.76%
Cumulative (1/6-22/6)	135,431,698	288,401,719	152,970,021	112.95%
Cumulative (4/1-22/6)	822,947,614	1,567,060,780	744,113,166	90.42%

NO. OF SHARES TRADED

	2025	2026	NET CHANGE	CHANGE (%)
Daily	3,401,131	4,828,823	1,427,692	41.98%
Cumulative (1/6-22/6)	55,751,487	86,003,929	30,252,442	54.26%
Cumulative (4/1-22/6)	415,284,822	531,622,009	116,337,187	28.01%

NO. OF TRANSACTIONS

	2025	2026	NET CHANGE	CHANGE (%)
Daily	2,857	4,320	1,463	51.21%
Cumulative (1/6-22/6)	38,763	79,622	40,859	105.41%
Cumulative (4/1-22/6)	267,362	438,605	171,243	64.05%

SOME FINANCIAL RATIOS FOR THE ASE (22/6/2026)

SECTOR	P/E	P/BV	DIVIDEND YIELD (%)	TURNOVER (%)
FINANCIAL	9.825	1.006	4.854	0.054
SERVICES	13.081	1.488	4.795	0.073
INDUSTRY	15.693	2.795	4.966	0.152
OVERALL	11.895	1.506	5.028	0.074

ASE GENERAL FREE FLOAT WEIGHTED INDEX ASEGI (1999=1000)

	SUNDAY 21/06/2026	MONDAY 22/06/2026	% CHANGE	
			DAY BEFORE	YTD
GENERAL INDEX ASEGI	3957.3	3947.6	-0.25%	9.30%
FINANCIAL	3879.4	3858.7	-0.53%	2.20%
SERVICES	2636.4	2643.3	0.26%	21.68%
INDUSTRY	10116.9	10109.9	-0.07%	13.94%

ASE FREE FLOAT WEIGHTED INDEX ASE20 (2014=1000)

	2164.3	2157.3	-0.32%	9.03%
--	--------	--------	--------	-------

TOTAL RETURN INDEX ASETR (2021=1074)

	2994.3	2984.7	-0.32%	14.70%
--	--------	--------	--------	--------

ASE WEIGHTED INDEX (1991=1000)

	SUNDAY 21/06/2026	MONDAY 22/06/2026	% CHANGE	
			DAY BEFORE	YTD
GENERAL	7822.7	7812.8	-0.13%	10.72%
BANKS	10011.9	9981.8	-0.30%	5.70%
INSURANCE	1938.2	1926.9	-0.58%	8.06%
SERVICES	1140.9	1140.6	-0.03%	4.85%
INDUSTRY	13323.8	13325.6	0.01%	16.86%

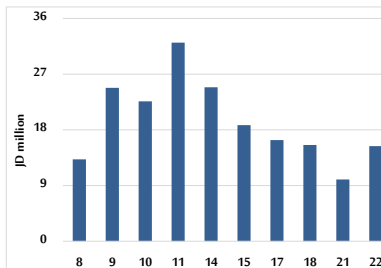
MARKET INDICES WEIGHTED BY FREE FLOAT MARKET CAP. (2012=1000)

	SUNDAY 21/06/2026	MONDAY 22/06/2026	% CHANGE	
			DAY BEFORE	YTD
FIRST MARKET	2237.6	2231.6	-0.27%	9.40%
SECOND MARKET	1045.7	1046.3	0.05%	2.34%

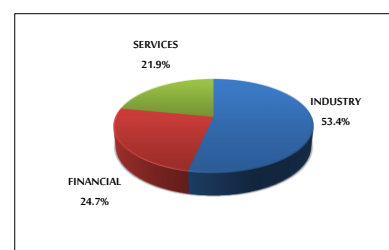
MARKET CAPITALIZATION (JD)

	29,068,057,092	29,029,771,552	-0.13%	9.57%
--	----------------	----------------	--------	-------

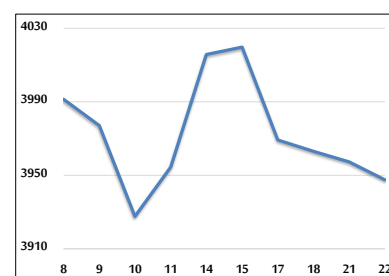
VALUE TRADED FROM 8/6 TO 22/6/2026



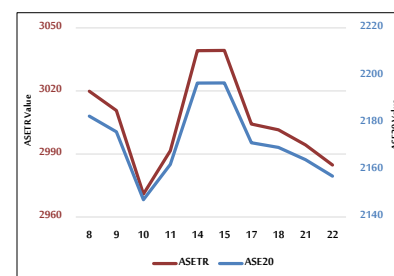
VALUE TRADED BY SECTOR MONDAY 22/6/2026



ASE GENERAL FREE FLOAT WEIGHTED INDEX 8/6 TO 22/6/2026



ASE20 INDEX & ASETR INDEX FROM 8/6 TO 22/6/2026



ASE WEIGHTED INDEX FROM 8/6 TO 22/6/2026

