

Daily Summary for Amman Stock Exchange

VALUE TRADED (JD)

	2025	2026	NET CHANGE	CHANGE (%)
Daily	12,608,552	8,120,609	-4,487,943	-35.59%
Cumulative (1/6-23/6)	148,040,250	296,522,328	148,482,078	100.30%
Cumulative (4/1-23/6)	835,556,166	1,575,181,389	739,625,223	88.52%

NO. OF SHARES TRADED

	2025	2026	NET CHANGE	CHANGE (%)
Daily	4,217,649	2,966,719	-1,250,930	-29.66%
Cumulative (1/6-23/6)	59,969,136	88,970,648	29,001,512	48.36%
Cumulative (4/1-23/6)	419,502,471	534,588,728	115,086,257	27.43%

NO. OF TRANSACTIONS

	2025	2026	NET CHANGE	CHANGE (%)
Daily	3,713	3,223	-490	-13.20%
Cumulative (1/6-23/6)	42,476	82,845	40,369	95.04%
Cumulative (4/1-23/6)	271,075	441,828	170,753	62.99%

SOME FINANCIAL RATIOS FOR THE ASE (23/6/2026)

SECTOR	P/E	P/BV	DIVIDEND YIELD (%)	TURNOVER (%)
FINANCIAL	9.664	0.990	4.935	0.038
SERVICES	12.939	1.472	4.847	0.040
INDUSTRY	15.561	2.772	5.008	0.078
OVERALL	11.743	1.487	5.093	0.045

ASE GENERAL FREE FLOAT WEIGHTED INDEX ASEGI (1999=1000)

	MONDAY 22/06/2026	TUESDAY 23/06/2026	% CHANGE	
			DAY BEFORE	YTD
GENERAL INDEX ASEGI	3947.6	3900.7	-1.19%	8.00%
FINANCIAL	3858.7	3815.0	-1.13%	1.04%
SERVICES	2643.3	2607.6	-1.35%	20.04%
INDUSTRY	10109.9	10035.0	-0.74%	13.10%

ASE FREE FLOAT WEIGHTED INDEX ASE20 (2014=1000)

	2157.3	2131.4	-1.20%	7.72%
--	--------	--------	--------	-------

TOTAL RETURN INDEX ASETR (2021=1074)

	2984.7	2948.9	-1.20%	13.33%
--	--------	--------	--------	--------

ASE WEIGHTED INDEX (1991=1000)

	MONDAY 22/06/2026	TUESDAY 23/06/2026	% CHANGE	
			DAY BEFORE	YTD
GENERAL	7812.8	7713.1	-1.28%	9.31%
BANKS	9981.8	9803.0	-1.79%	3.81%
INSURANCE	1926.9	1931.9	0.26%	8.34%
SERVICES	1140.6	1132.2	-0.73%	4.09%
INDUSTRY	13325.6	13198.7	-0.95%	15.75%

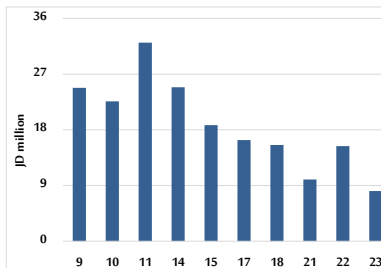
MARKET INDICES WEIGHTED BY FREE FLOAT MARKET CAP. (2012=1000)

	MONDAY 22/06/2026	TUESDAY 23/06/2026	% CHANGE	
			DAY BEFORE	YTD
FIRST MARKET	2231.6	2204.9	-1.20%	8.09%
SECOND MARKET	1046.3	1044.9	-0.13%	2.20%

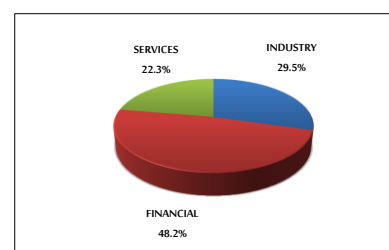
MARKET CAPITALIZATION (JD)

	29,029,771,552	28,675,826,111	-1.22%	8.24%
--	----------------	----------------	--------	-------

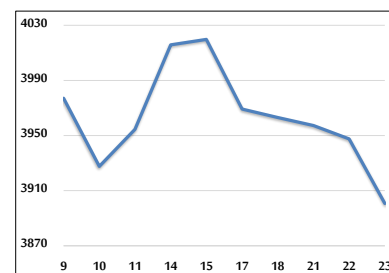
VALUE TRADED FROM 9/6 TO 23/6/2026



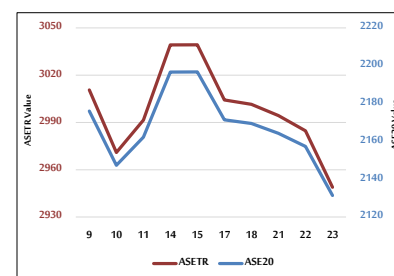
VALUE TRADED BY SECTOR TUESDAY 23/6/2026



ASE GENERAL FREE FLOAT WEIGHTED INDEX 9/6 TO 23/6/2026



ASE20 INDEX & ASETR INDEX FROM 9/6 TO 23/6/2026



ASE WEIGHTED INDEX FROM 9/6 TO 23/6/2026

