

## Daily Summary for Amman Stock Exchange

### VALUE TRADED (JD)

	2025	2026	NET CHANGE	CHANGE (%)
Daily	-	13,727,048	-	-
Cumulative (1/6-29/6)	148,040,250	350,492,823	202,452,573	136.76%
Cumulative (4/1-29/6)	835,556,166	1,629,151,884	793,595,718	94.98%

### NO. OF SHARES TRADED

	2025	2026	NET CHANGE	CHANGE (%)
Daily	-	5,405,493	-	-
Cumulative (1/6-29/6)	59,969,136	107,548,754	47,579,618	79.34%
Cumulative (4/1-29/6)	419,502,471	553,166,834	133,664,363	31.86%

### NO. OF TRANSACTIONS

	2025	2026	NET CHANGE	CHANGE (%)
Daily	-	4,209	-	-
Cumulative (1/6-29/6)	42,476	99,961	57,485	135.34%
Cumulative (4/1-29/6)	271,075	458,944	187,869	69.31%

### SOME FINANCIAL RATIOS FOR THE ASE (29/6/2026)

SECTOR	P/E	P/BV	DIVIDEND YIELD (%)	TURNOVER (%)
FINANCIAL	9.565	0.980	4.989	0.069
SERVICES	12.887	1.466	4.867	0.067
INDUSTRY	14.677	2.614	5.310	0.151
OVERALL	11.378	1.441	5.257	0.082

### ASE GENERAL FREE FLOAT WEIGHTED INDEX ASEGI (1999=1000)

	SUNDAY 28/06/2026	MONDAY 29/06/2026	% CHANGE	
			DAY BEFORE	YTD
GENERAL INDEX ASEGI	3824.9	3844.1	0.50%	6.44%
FINANCIAL	3789.3	3784.6	-0.12%	0.24%
SERVICES	2532.2	2589.3	2.25%	19.19%
INDUSTRY	9588.1	9567.6	-0.21%	7.83%

### ASE FREE FLOAT WEIGHTED INDEX ASE20 (2014=1000)

	2089.1	2099.8	0.51%	6.12%
--	--------	--------	-------	-------

### TOTAL RETURN INDEX ASETR (2021=1074)

	2890.4	2905.2	0.51%	11.65%
--	--------	--------	-------	--------

### ASE WEIGHTED INDEX (1991=1000)

	SUNDAY 28/06/2026	MONDAY 29/06/2026	% CHANGE	
			DAY BEFORE	YTD
GENERAL	7473.4	7473.3	0.00%	5.91%
BANKS	9703.1	9688.4	-0.15%	2.59%
INSURANCE	1954.4	1969.1	0.75%	10.42%
SERVICES	1121.2	1130.3	0.81%	3.91%
INDUSTRY	12481.7	12475.6	-0.05%	9.41%

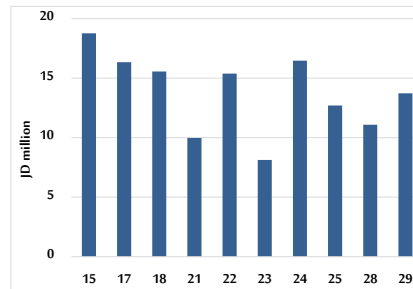
### MARKET INDICES WEIGHTED BY FREE FLOAT MARKET CAP. (2012=1000)

	SUNDAY 28/06/2026	MONDAY 29/06/2026	% CHANGE	
			DAY BEFORE	YTD
FIRST MARKET	2162.5	2173.1	0.49%	6.54%
SECOND MARKET	1041.9	1041.6	-0.04%	1.88%

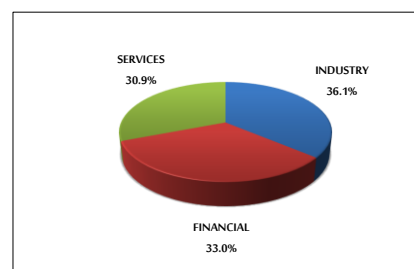
### MARKET CAPITALIZATION (JD)

	27,819,118,847	27,819,205,353	0.00%	5.00%
--	----------------	----------------	-------	-------

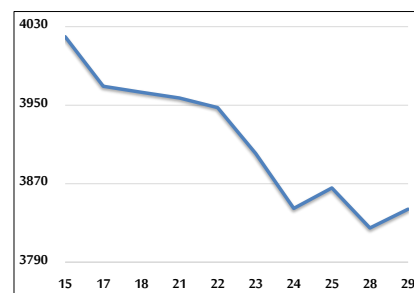
### VALUE TRADED FROM 15/6 TO 29/6/2026



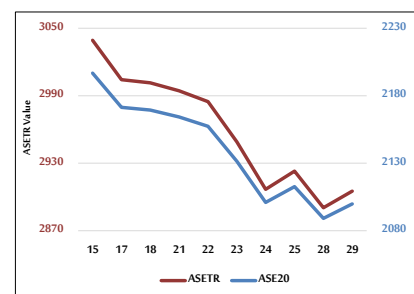
### VALUE TRADED BY SECTOR MONDAY 29/6/2026



### ASE GENERAL FREE FLOAT WEIGHTED INDEX 15/6 TO 29/6/2026



### ASE20 INDEX & ASETR INDEX FROM 15/6 TO 29/6/2026



### ASE WEIGHTED INDEX FROM 15/6 TO 29/6/2026

