

Daily Summary for Amman Stock Exchange

VALUE TRADED (JD)

	2025	2026	NET CHANGE	CHANGE (%)
Daily	8,070,913	24,878,359	16,807,446	208.25%
Cumulative (1/6-14/6)	81,511,489	212,390,540	130,879,051	160.57%
Cumulative (4/1-14/6)	769,027,405	1,491,049,601	722,022,196	93.89%

NO. OF SHARES TRADED

	2025	2026	NET CHANGE	CHANGE (%)
Daily	3,948,855	5,609,474	1,660,619	42.05%
Cumulative (1/6-14/6)	32,213,305	58,975,198	26,761,893	83.08%
Cumulative (4/1-14/6)	391,746,640	504,593,278	112,846,638	28.81%

NO. OF TRANSACTIONS

	2025	2026	NET CHANGE	CHANGE (%)
Daily	1,965	5,498	3,533	179.80%
Cumulative (1/6-14/6)	26,491	55,579	29,088	109.80%
Cumulative (4/1-14/6)	255,090	414,562	159,472	62.52%

SOME FINANCIAL RATIOS FOR THE ASE (14/6/2026)

SECTOR	P/E	P/BV	DIVIDEND YIELD (%)	TURNOVER (%)
FINANCIAL	9.926	1.017	4.805	0.041
SERVICES	13.328	1.516	4.706	0.119
INDUSTRY	16.032	2.856	4.861	0.223
OVERALL	12.095	1.532	4.944	0.086

ASE GENERAL FREE FLOAT WEIGHTED INDEX ASEGI (1999=1000)

	THURSDAY 11/06/2026	SUNDAY 14/06/2026	% CHANGE	
			DAY BEFORE	YTD
GENERAL INDEX ASEGI	3954.5	4015.8	1.55%	11.19%
FINANCIAL	3858.4	3909.1	1.31%	3.54%
SERVICES	2683.7	2703.5	0.74%	24.45%
INDUSTRY	9968.1	10289.1	3.22%	15.96%

ASE FREE FLOAT WEIGHTED INDEX ASE20 (2014=1000)

	2162.2	2196.7	1.59%	11.02%
--	--------	--------	-------	--------

TOTAL RETURN INDEX ASETR (2021=1074)

	2991.5	3039.2	1.59%	16.80%
--	--------	--------	-------	--------

ASE WEIGHTED INDEX (1991=1000)

	THURSDAY 11/06/2026	SUNDAY 14/06/2026	% CHANGE	
			DAY BEFORE	YTD
GENERAL	7742.8	7944.7	2.61%	12.59%
BANKS	9936.5	10092.0	1.57%	6.87%
INSURANCE	1937.0	1938.8	0.09%	8.72%
SERVICES	1146.4	1151.5	0.45%	5.86%
INDUSTRY	13116.9	13642.4	4.01%	19.64%

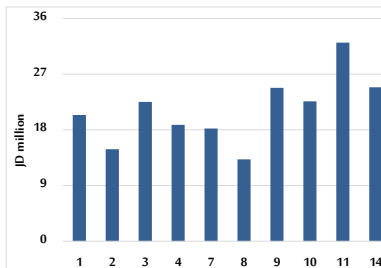
MARKET INDICES WEIGHTED BY FREE FLOAT MARKET CAP. (2012=1000)

	THURSDAY 11/06/2026	SUNDAY 14/06/2026	% CHANGE	
			DAY BEFORE	YTD
FIRST MARKET	2235.7	2271.1	1.58%	11.34%
SECOND MARKET	1033.8	1037.5	0.35%	1.47%

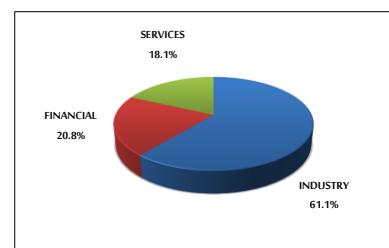
MARKET CAPITALIZATION (JD)

	28,782,514,057	29,500,873,746	2.50%	11.35%
--	----------------	----------------	-------	--------

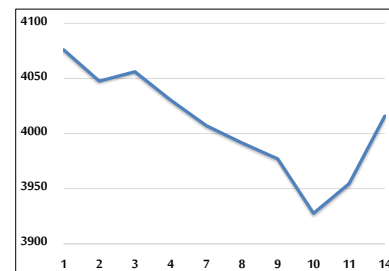
VALUE TRADED FROM 1/6 TO 14/6/2026



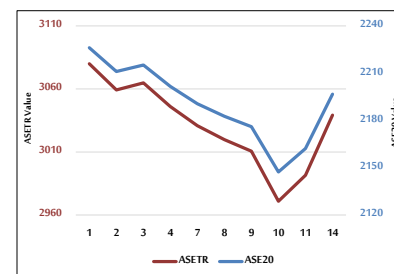
VALUE TRADED BY SECTOR SUNDAY 14/6/2026



ASE GENERAL FREE FLOAT WEIGHTED INDEX 1/6 TO 14/6/2026



ASE20 INDEX & ASETR INDEX FROM 1/6 TO 14/6/2026



ASE WEIGHTED INDEX FROM 1/6 TO 14/6/2026

